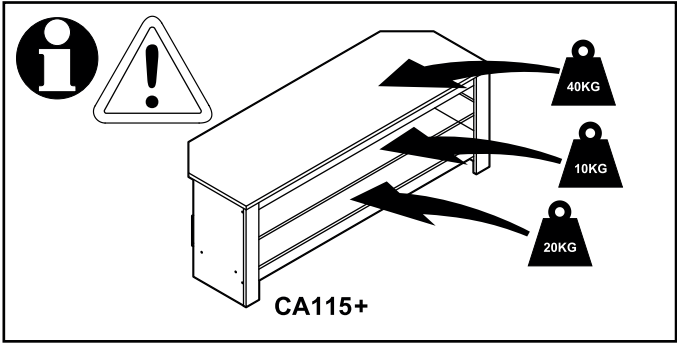




CUSTOMER SERVICES HELP LINE NUMBER:


+44 (0) 333 320 0463 (UK)
1-800 667 0808 (USA)



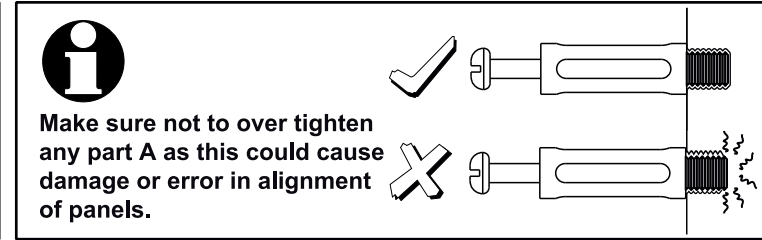
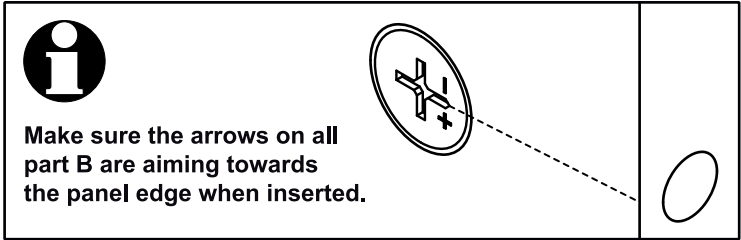
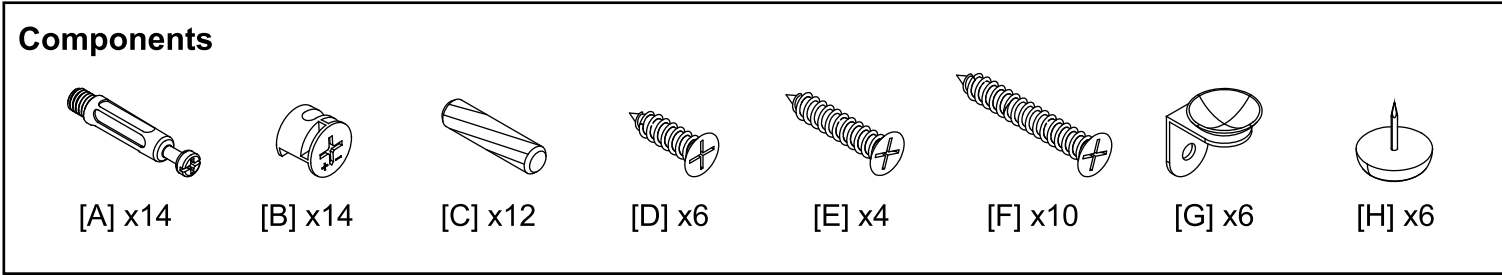
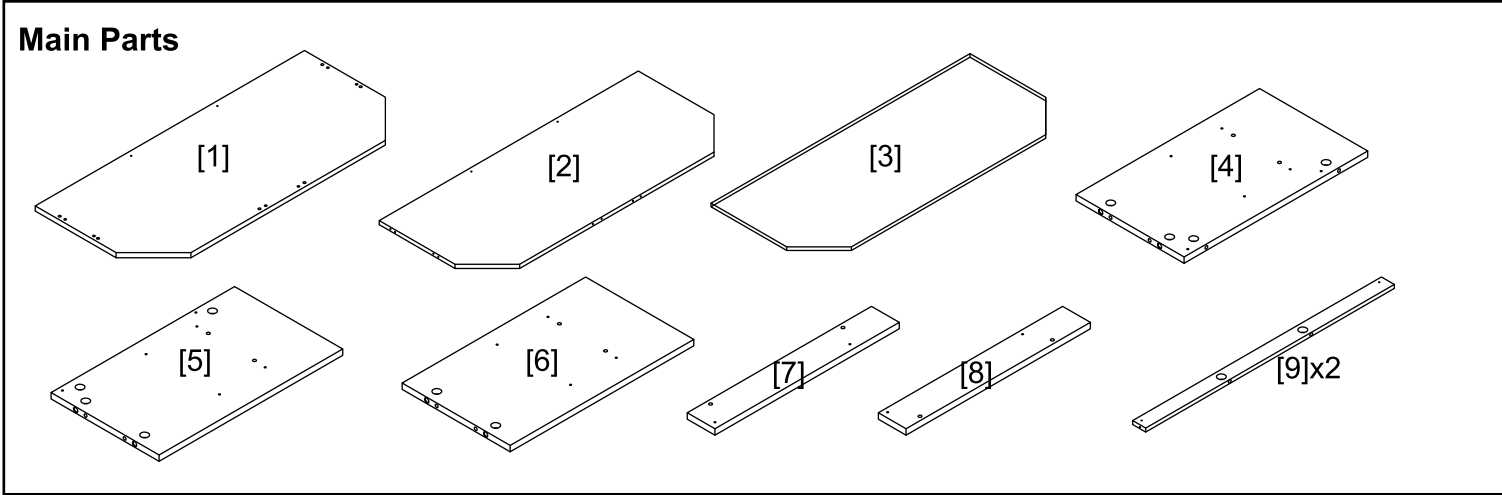
Tools

Construction will require a standard cross head screwdriver not included.

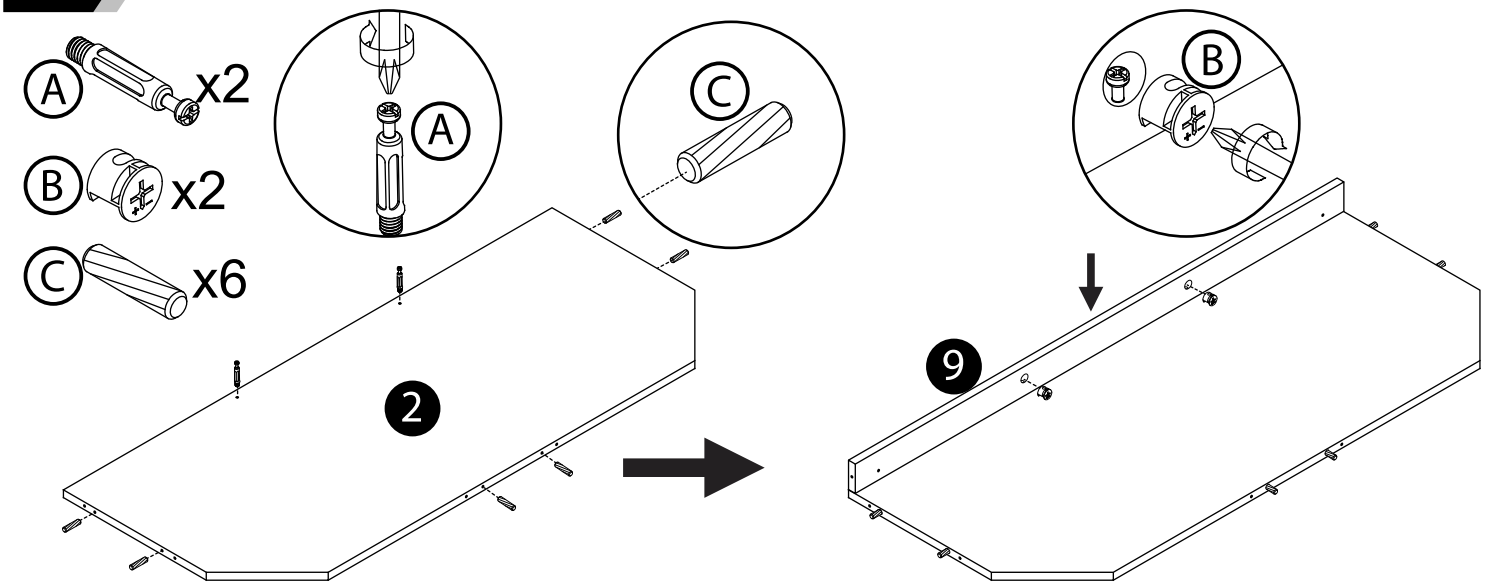




Take extra care not to over tighten any screws as this may cause damage.

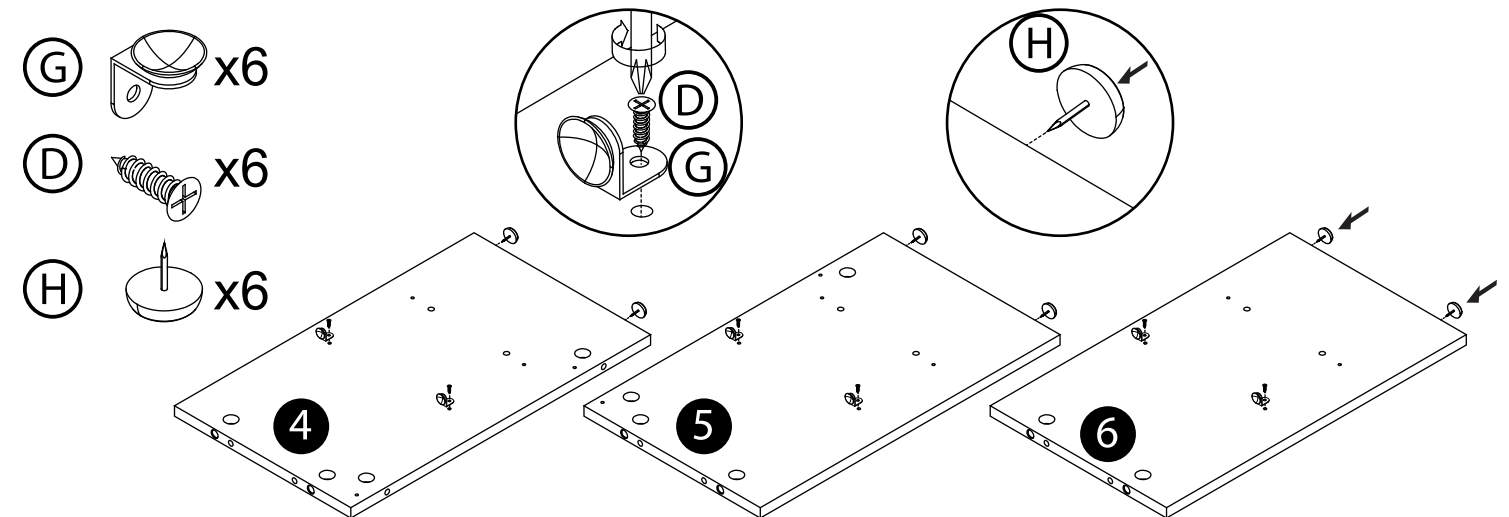


1

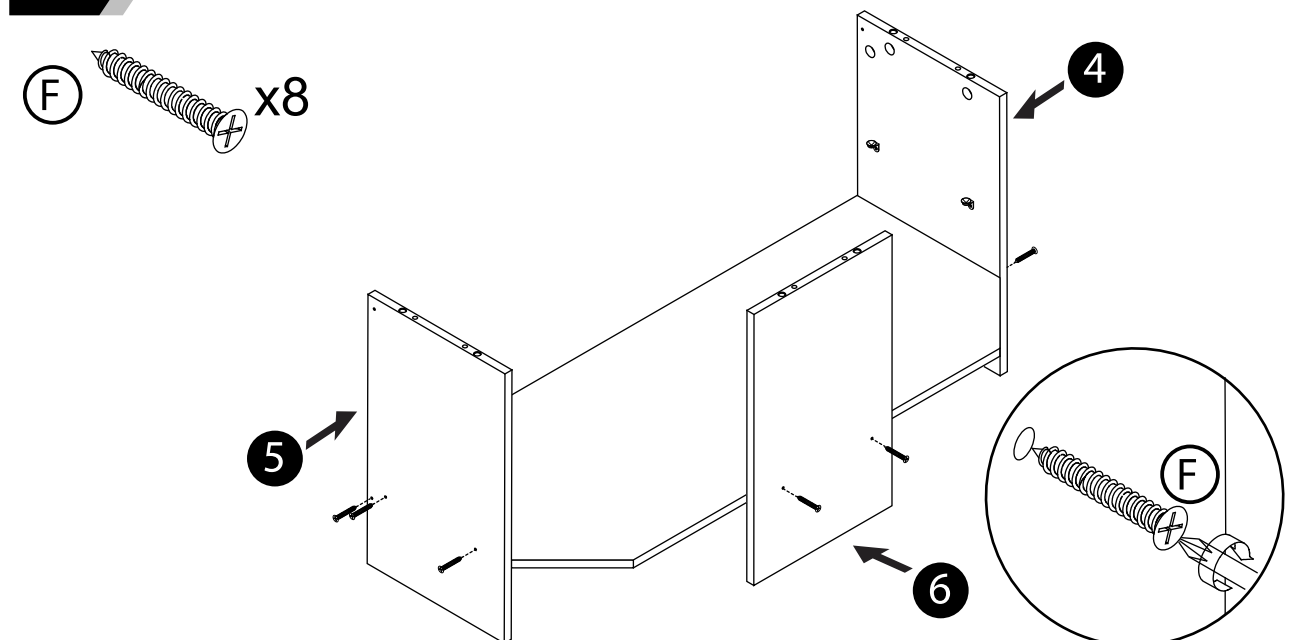


2

NOTE: If Part H doesn't fit easily by pressing it in with a thumb, a small hammer could be used to tap into position.

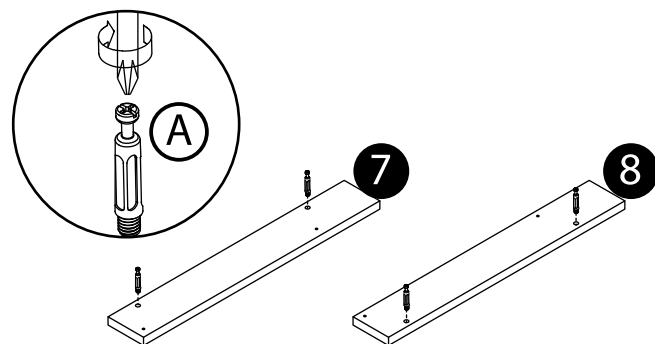


3



4

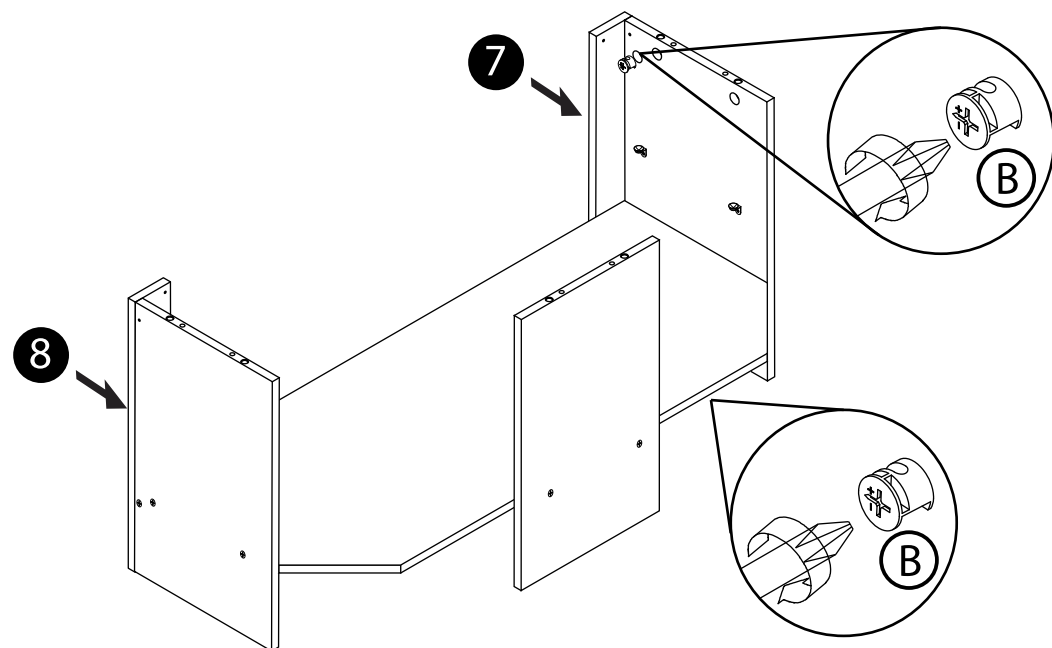
(A) x2



5

NOTE: Make sure to insert all 4 part Bs and tighten to secure the panels in place (2 part Bs should be fitted to the underside not visible in this image.)

(B) x4

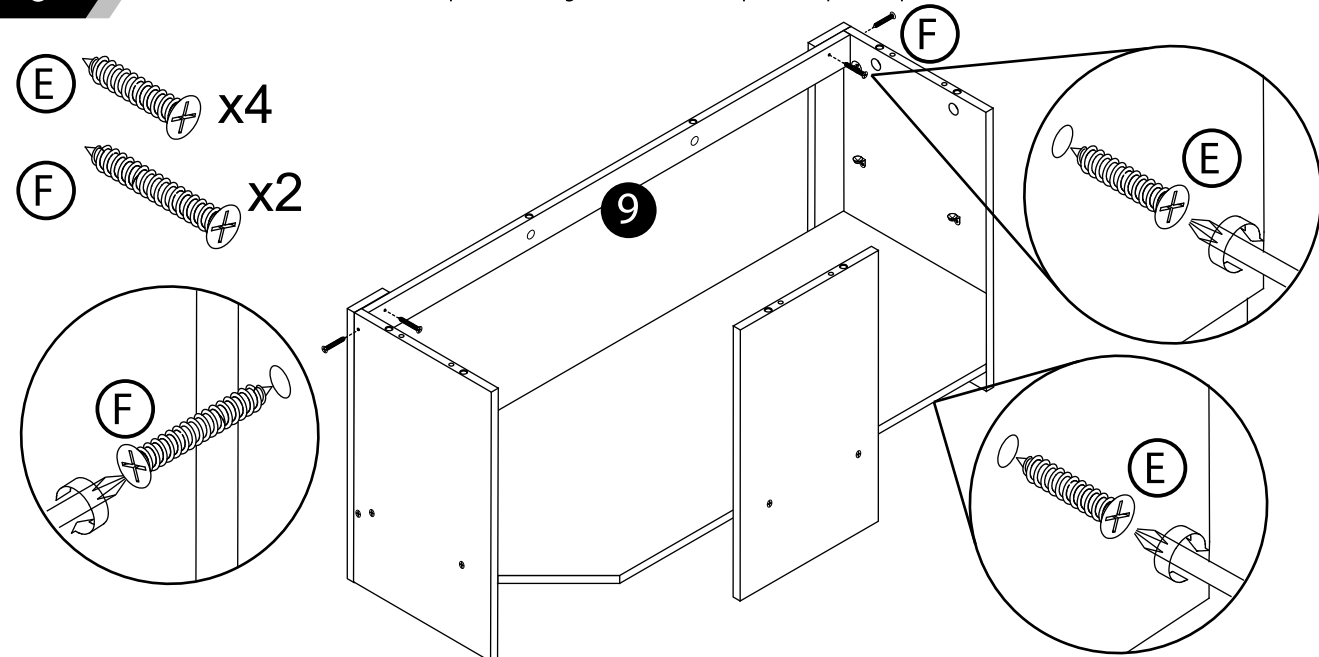


6

NOTE: Make sure to insert all 4z part Es and tighten to secure the panels in place (2 part Es should be fitted to the underside not visible in this image.)

(E) x4

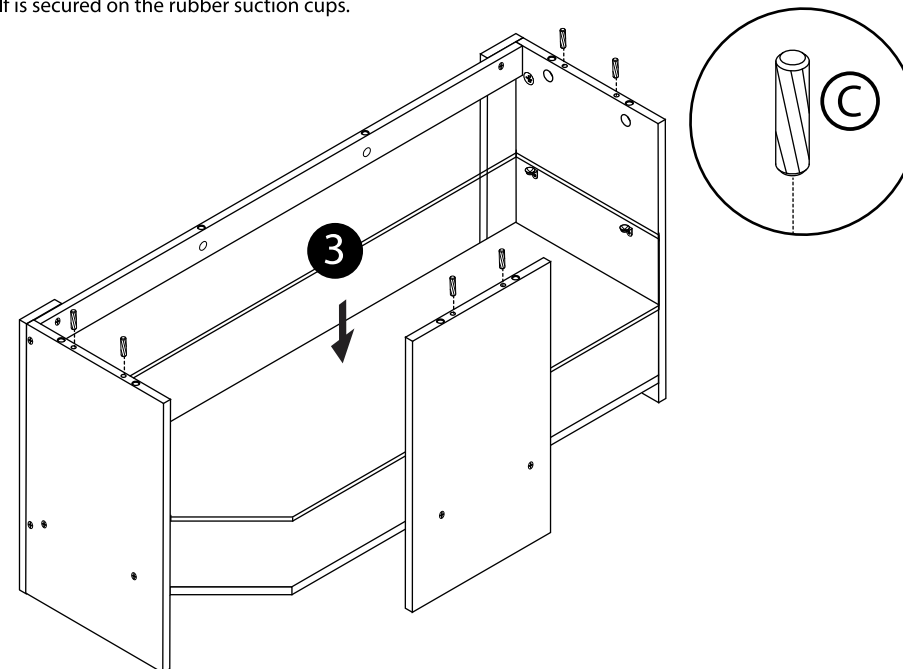
(F) x2



7

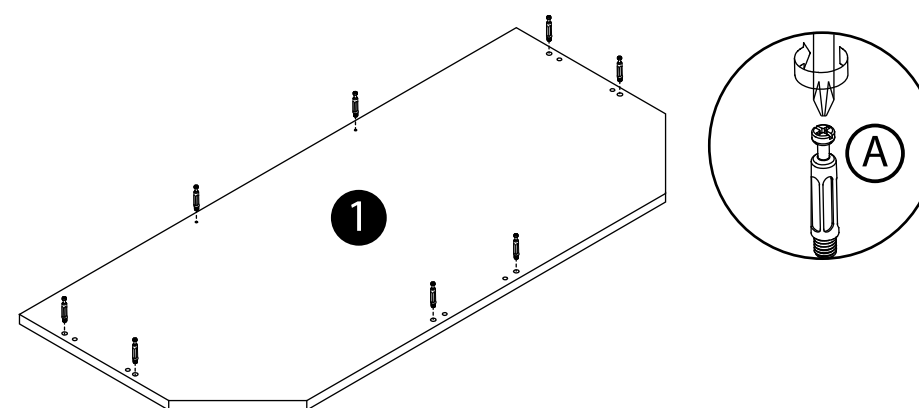
NOTE: Make sure the glass shelf is secured on the rubber suction cups.

(C) x6



8

(A) x8



9

NOTE: Once part 1 is fitted secure with 8 part Bs. Make sure all part Bs are tightened to secure the top in place.

(B) x8

