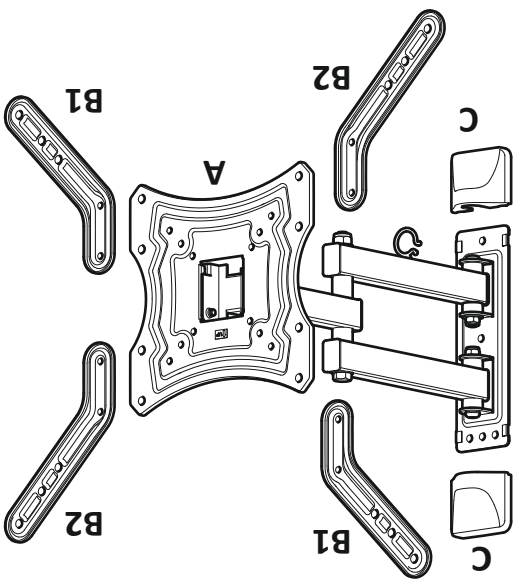
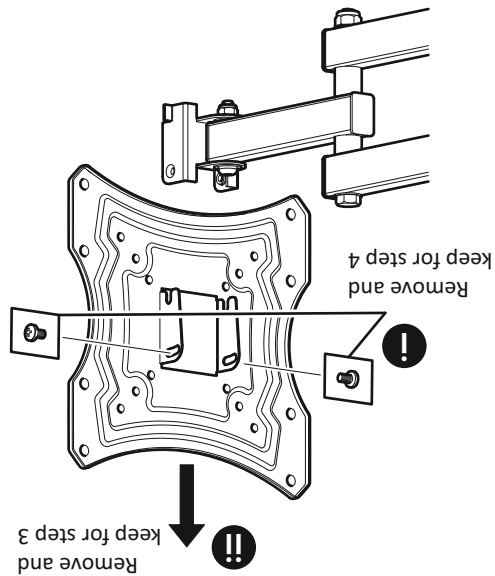
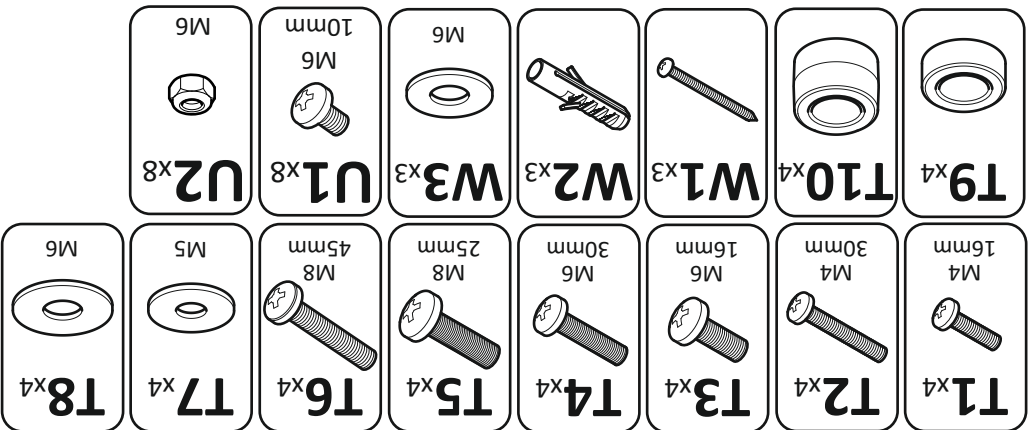


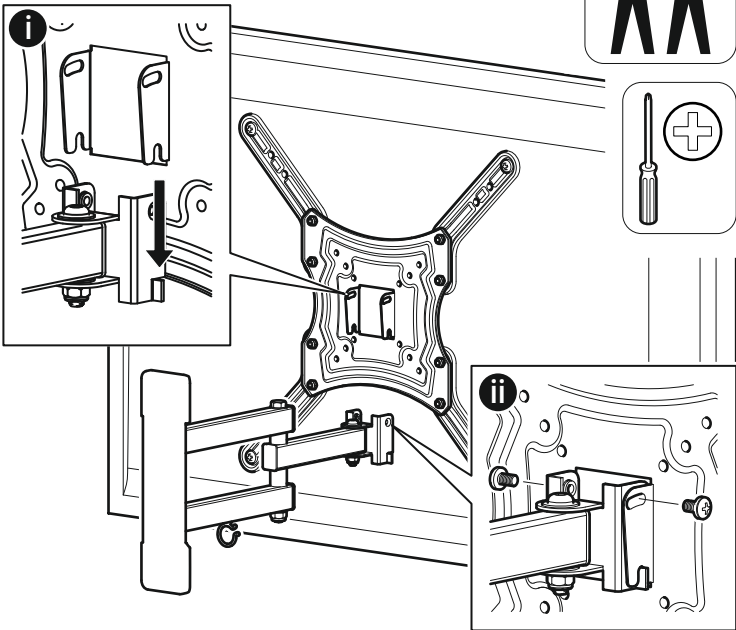
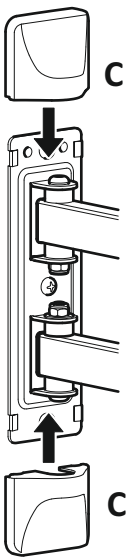
1



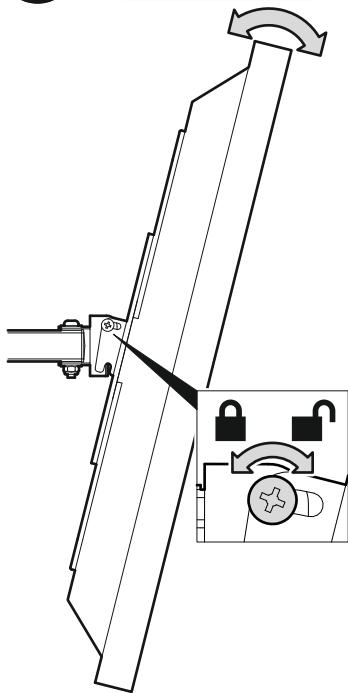
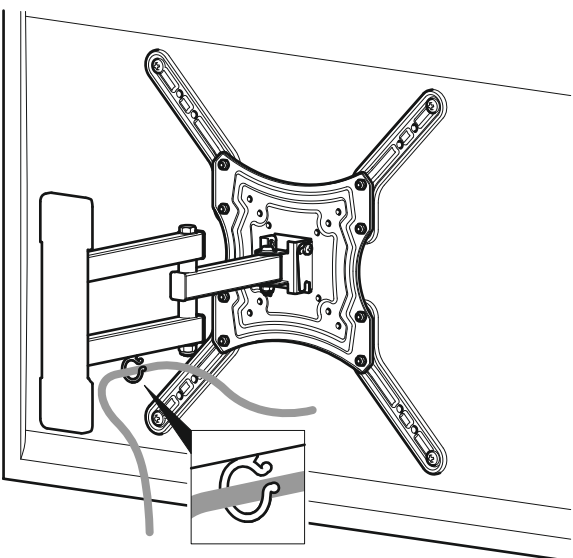
Boxed Parts



Connecting the TV

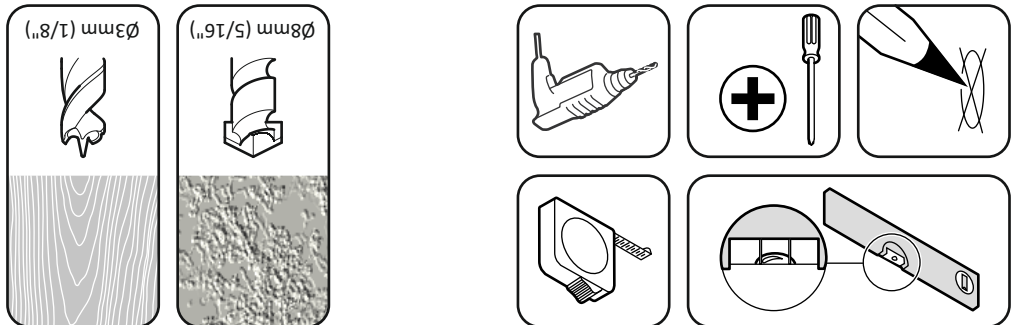


Optional - Lock Tilt



Ensure cables don't restrict arm movement

Tools Recommended



Retain all packaging in case the bracket needs to be returned.

Contents may vary from photography/illustrations.

You will not need all these parts, so expect there to be some left over depending upon the specification of your TV.

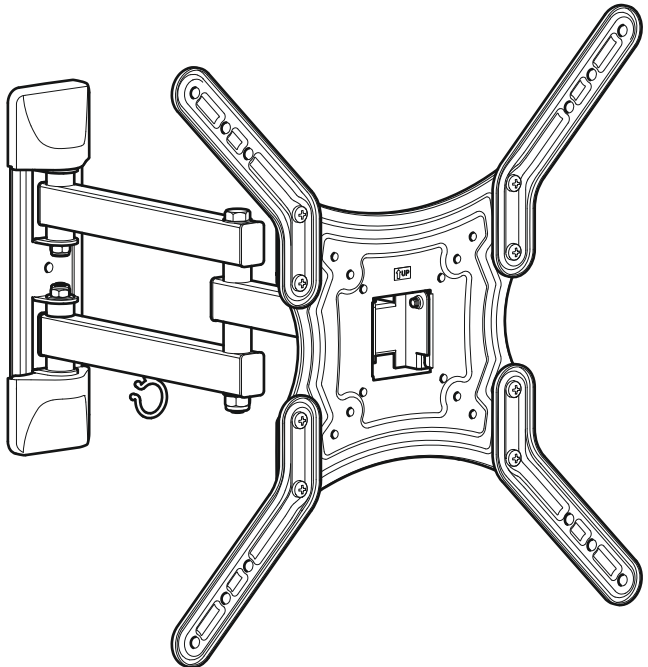
This product is intended for indoor use only. Use of this product outdoors could lead to failure and personal injury.

It is the responsibility of the installer to ensure that the mounting wall is of a suitable standard and void of any services (eg gas, electricity, water etc).

AVF accept no responsibility for any damage or loss caused by installing this product in a sub standard wall.

Periodically check all nuts and bolts are tight.

468366rev00



55lbs
25kg



Read through ALL instructions before commencing installation.

Please don't return me to the store

If you are unsure or need advice
please contact our support team:

0333 320 0463 or avfgroup.com

Phone lines open Mon-Fri during AVF office hours



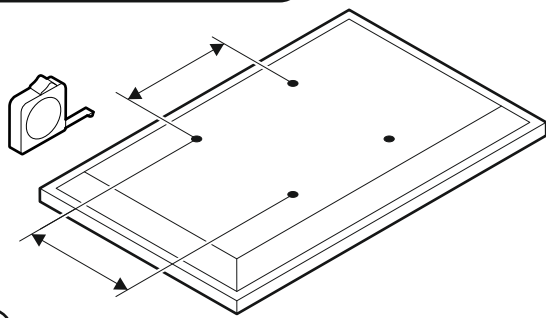
2

Measure the TV Fixing Holes Width and Height

OPTION 1
75 x 75mm, 100 x 100mm,
200 x 100mm, 200 x 200mm

OPTION 2
400 x 200mm

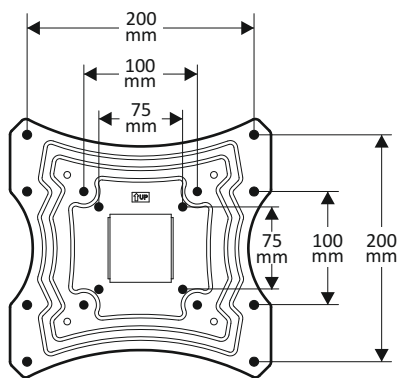
OPTION 3
300 x 300mm, 400 x 400mm



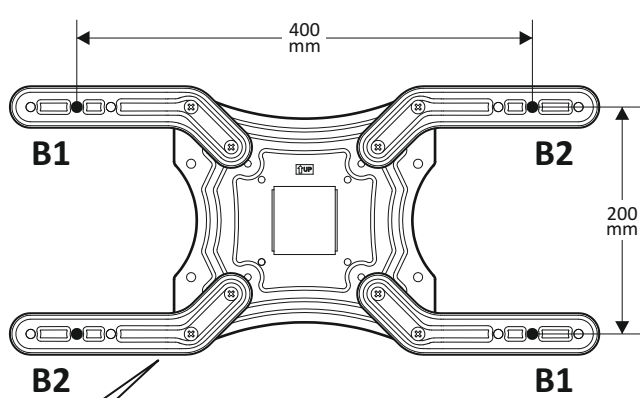
3

Preparing the TV Bracket

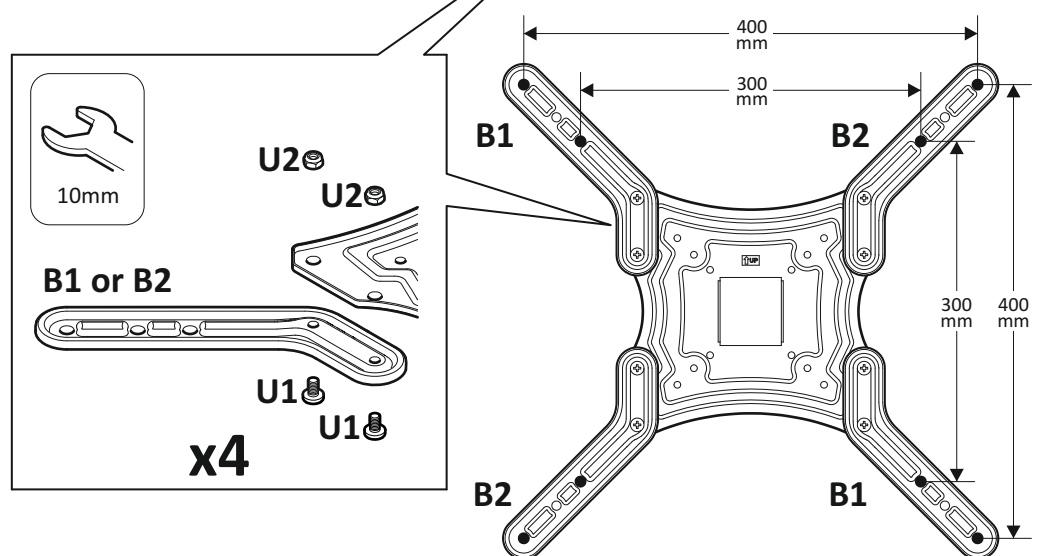
OPTION 1



OPTION 2

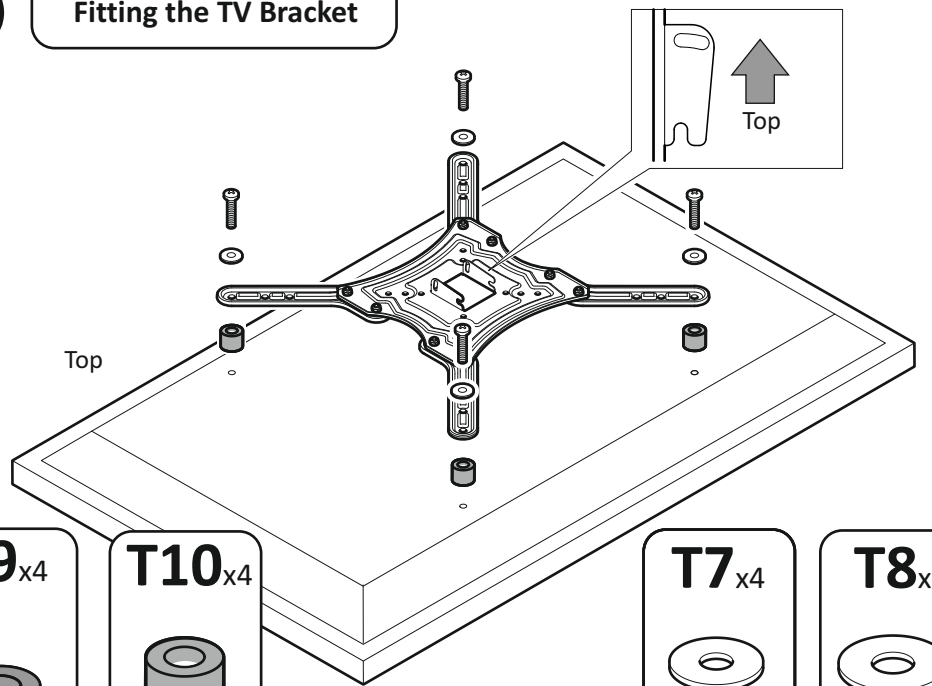


OPTION 3



4

Fitting the TV Bracket

T9_{x4}T10_{x4}T7_{x4}

M5

T8_{x4}

M6

T1_{x4}

M4 x 16mm

T2_{x4}

M4 x 30mm

T3_{x4}

M6 x 16mm

T4_{x4}

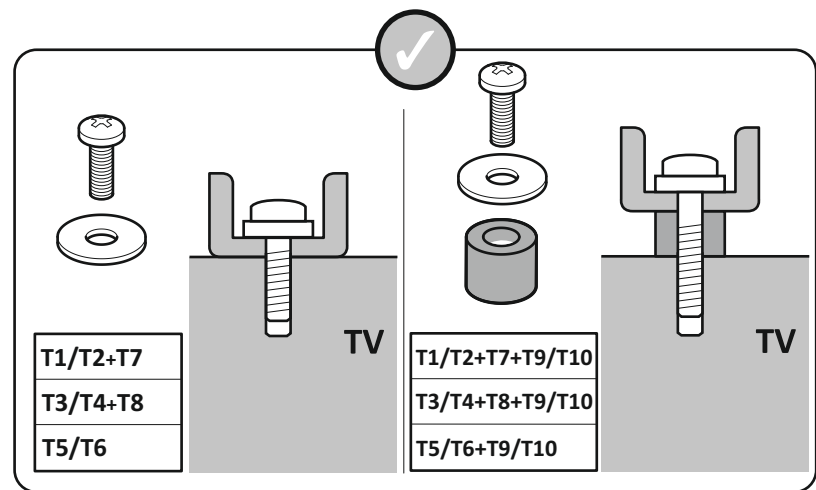
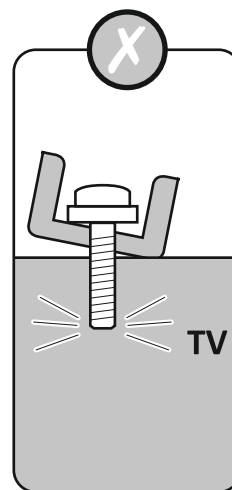
M6 x 30mm

T5_{x4}

M8 x 25mm

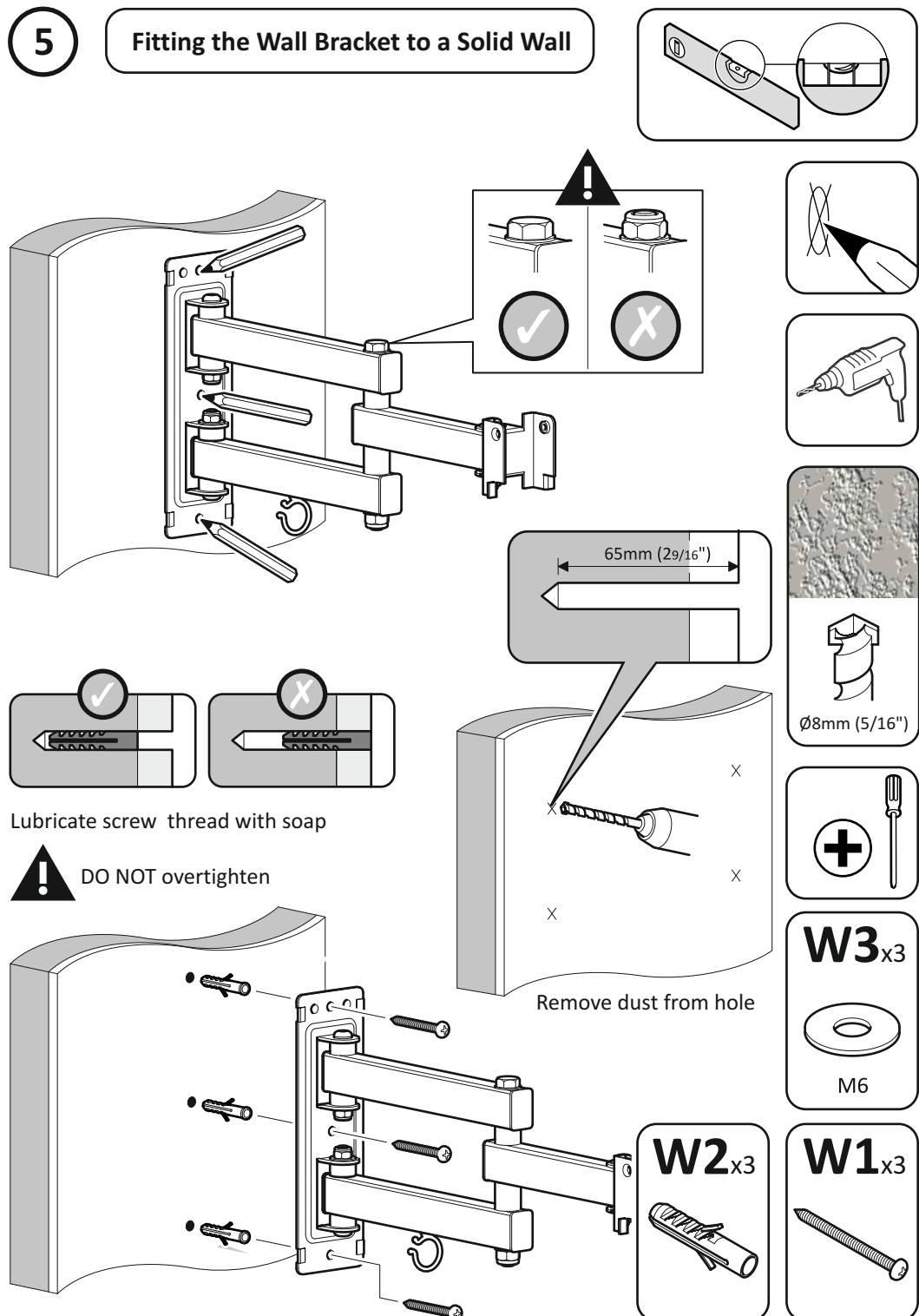
T6_{x4}

M8 x 45mm



5

Fitting the Wall Bracket to a Solid Wall



5

Fitting the Wall Bracket to a Wood Stud Wall

