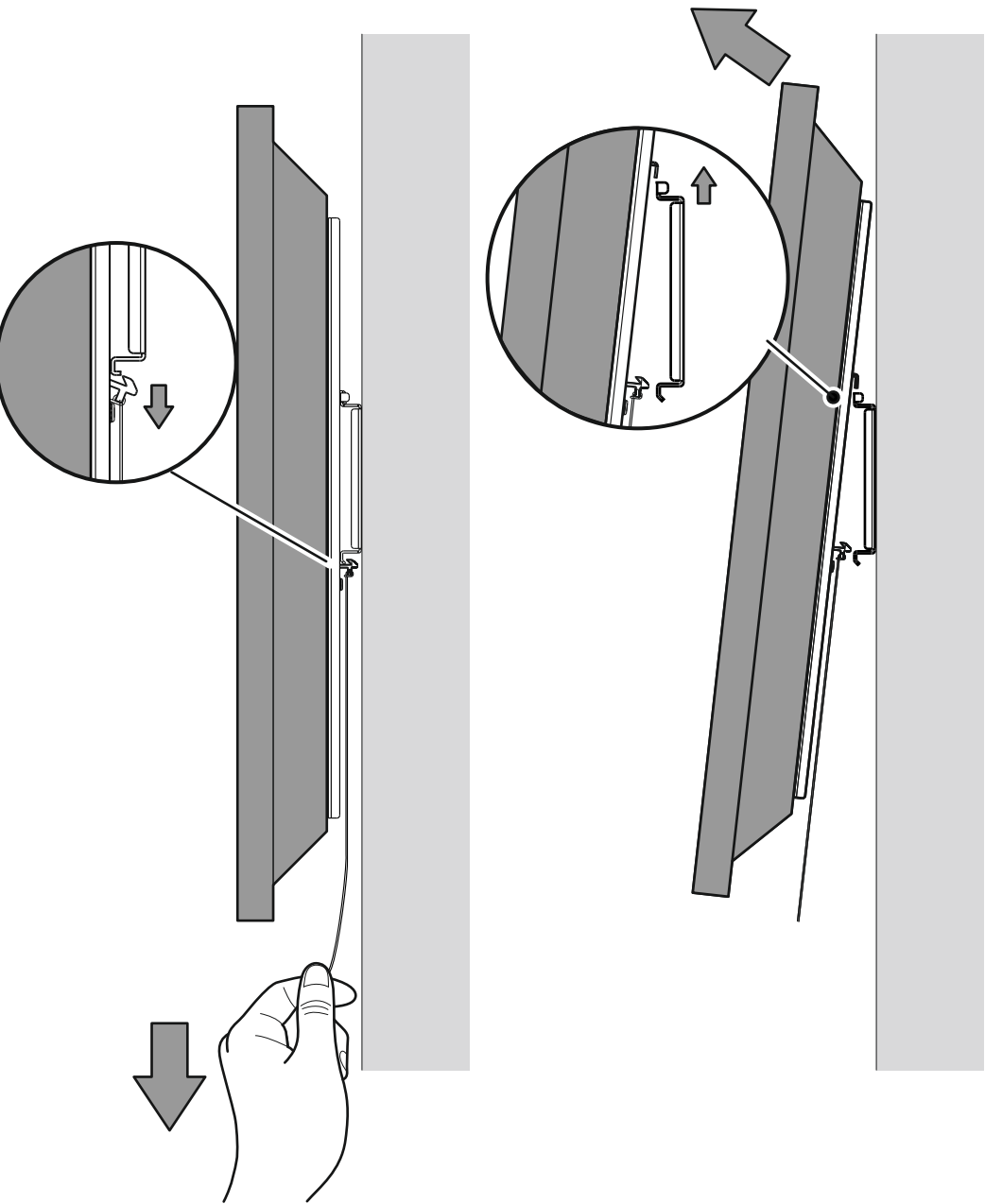
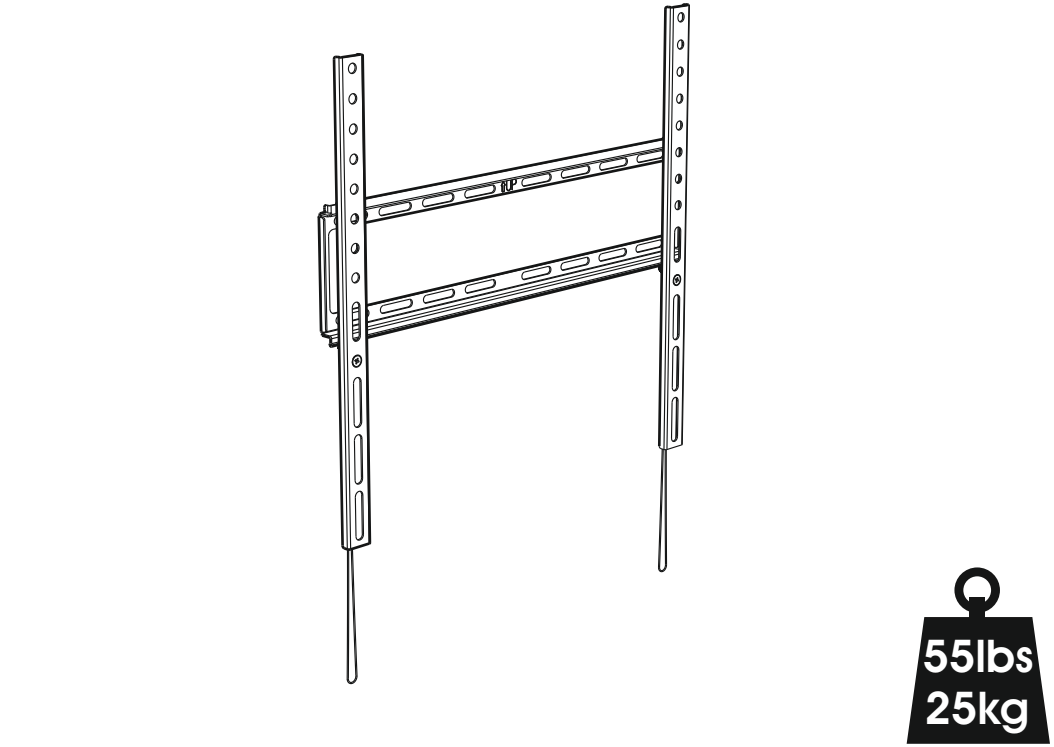


4 To Remove the TV



468364 rev00



STOP Read through ALL instructions before commencing installation.

Please don't return me to the store

If you are unsure or need advice please contact our support team:

0333 320 0463 or **avfgroup.com**

Phone lines open Mon-Fri during AVF office hours

1

Fitting the TV Bracket

Top

Top

T1x4

M4 x 16mm

T2x4

M4 x 30mm

T3x4

M6 x 16mm

T4x4

M6 x 30mm

T5x4

M8 x 25mm

T6x4

M8 x 45mm

T7x4

M5

T8x4

M6

T9x4

T10x4

X

TV

T1/T2+T7

T3/T4+T8

T5/T6

✓

TV

T1/T2+T7+T9/T10

T3/T4+T8+T9/T10

T5/T6+T9/T10

+

+

2

Fitting the Wall Bracket to a Solid Wall

UP

65mm (2 9/16")

Remove dust from hole

Lubricate screw thread with soap

✓

X

W3x4

M6

W2x4

W1x4

2

Fitting the Wall Bracket to a Wood Stud Wall

UP

50mm (2")

Ensure bracket is in the centre of the wood stud

Lubricate screw thread with soap

W1x4

W3x4

M6

3

Connecting the TV

Click!

2

Fitting the Wall Bracket to a Solid Wall

UP

65mm (2 9/16")

Remove dust from hole

Lubricate screw thread with soap

✓

X

W3x4

M6

W2x4

W1x4

2

Fitting the Wall Bracket to a Wood Stud Wall

UP

50mm (2")

Ensure bracket is in the centre of the wood stud

Lubricate screw thread with soap

W1x4

W3x4

M6

3

Connecting the TV

Click!

2

Fitting the Wall Bracket to a Solid Wall

UP

65mm (2 9/16")

Remove dust from hole

Lubricate screw thread with soap

✓

X

W3x4

M6

W2x4

W1x4

2

Fitting the Wall Bracket to a Wood Stud Wall

UP

50mm (2")

Ensure bracket is in the centre of the wood stud

Lubricate screw thread with soap

W1x4

W3x4

M6

3

Connecting the TV

Click!

3

Connecting the TV

Click!