

John Lewis

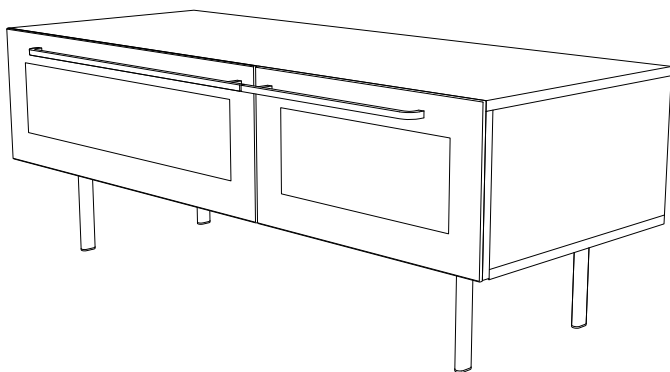
Instruction manual

JL SCND 1200/17

Television Stand

Glass doors supplied
separately:

Model number JLSCND2DRS

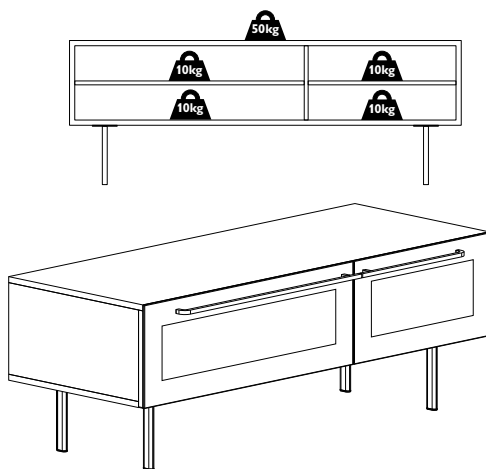


Important safety information

Thank you for purchasing this television stand. Please read the instructions and important information carefully to ensure safe and satisfactory use of this product.

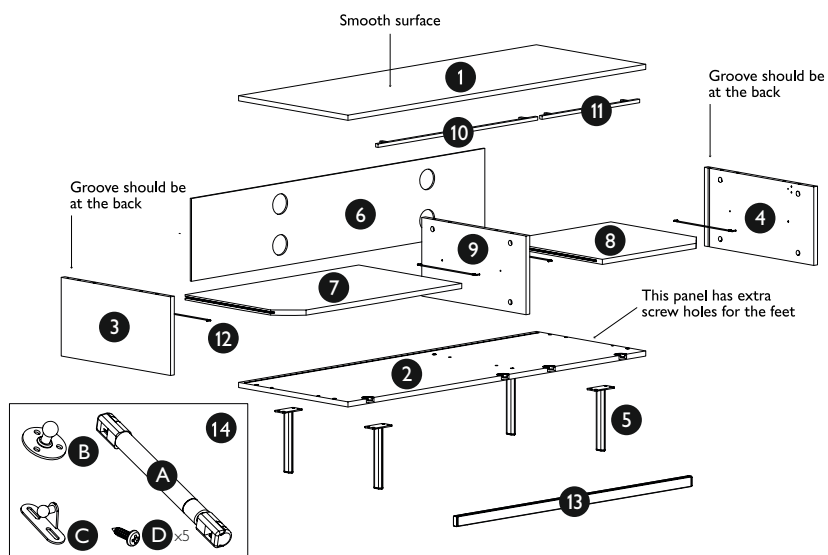
1. Before starting assembly please take time to familiarise yourself with the instructions and the components listed in this manual, as this product could be unstable if incorrectly assembled.
2. Do not place hot or cold items against or in close proximity to any surface on this product.
3. Do not strike any glass with hard or pointed items.
4. When cleaning glass or high gloss panels use a clean damp cloth or leather with washing up liquid or soft soap if necessary. Do not use washing powders or other substances containing abrasives as these may scratch the glass. Dry with a soft cloth.
5. In order to maintain a high quality finish, when cleaning metal, painted or wooden parts please use a soft cloth with a suitable furniture polish if required.
6. Do not sit or stand on this product.
7. **Do not overtighten any part of this assembly.**

Note: Maximum load for this product should not exceed 90kg in total. This product must be assembled in accordance with these assembly instructions. Maximum load for top shelf is 50kg. Maximum load for other shelves is 10kg.

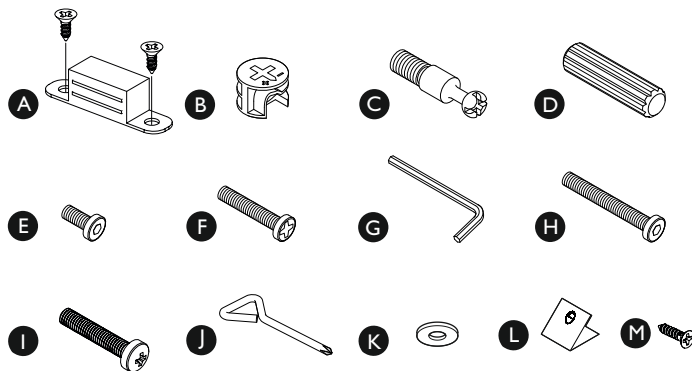


Door fronts supplied separately
Model number JLSCND2DRS

Parts list

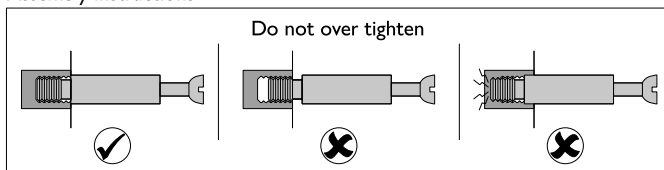


- | | |
|--------------------|----------------------|
| 1 Top panel x 1 | 8 Short shelf x 1 |
| 2 Bottom panel x 1 | 9 Dividing panel x 1 |
| 3 Left panel x 1 | 10 Long handle x 1 |
| 4 Right panel x 1 | 11 Short handle x 1 |
| 5 Leg x 4 | 12 Shelf support x 4 |
| 6 Back panel x 1 | 13 Cross brace x 1 |
| 7 Long shelf x 1 | 14 Door Stay Kit x 2 |

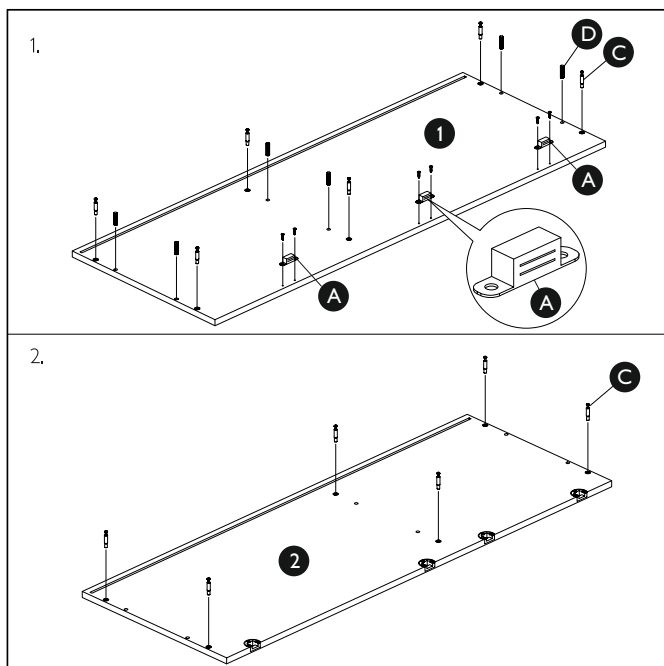


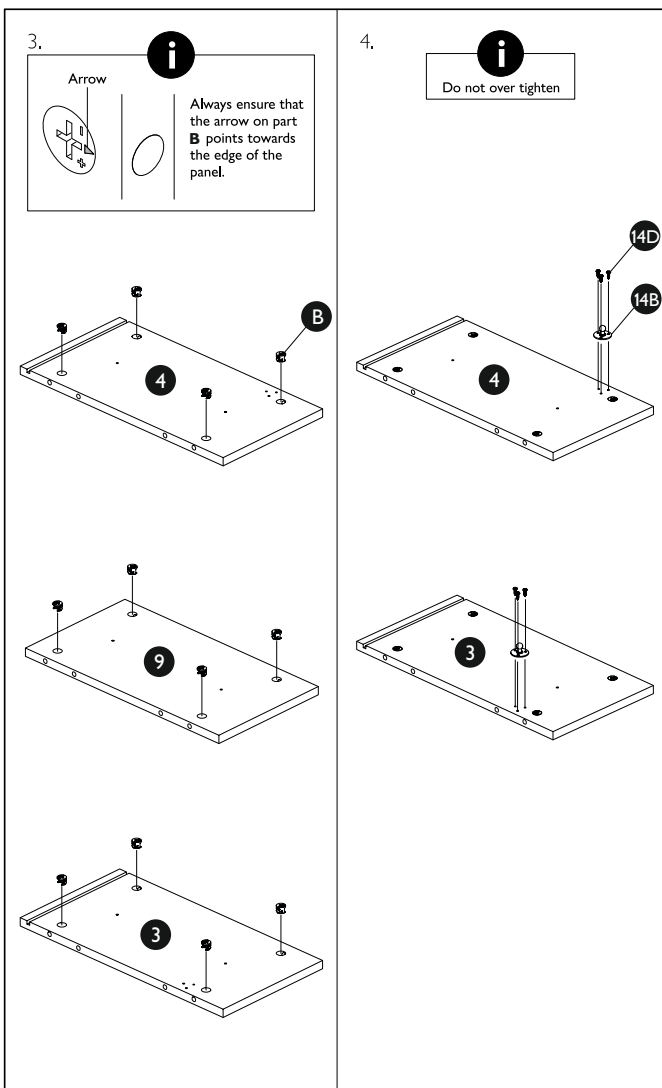
- | | | |
|-----------------------------|---------------------------|--------------------------|
| A Door catch x 3 | B Cam lock x 12 | C Cam bolt x 12 |
| D Dowel x 12 | E (M6 x 12mm) x 16 | F (M6 x 22mm) x 4 |
| G Allen key x 1 | H (M6 x 40mm) x 3 | I (M3 x 16mm) x 4 |
| J Pozi head tool x 1 | K Washer x 4 | L Clips x 4 |
| M Screw x 4 | | |

Assembly instructions

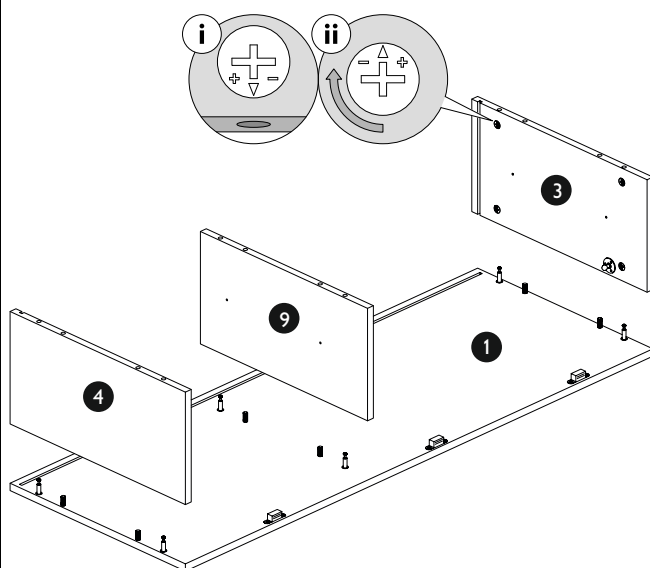


Put a piece of material underneath the panels to prevent damage.

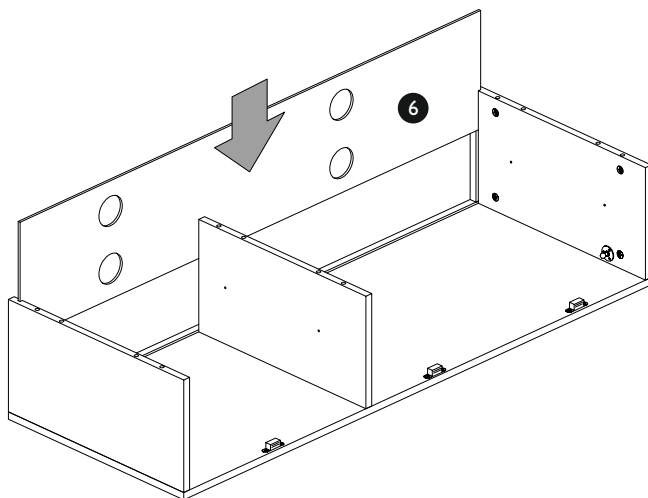


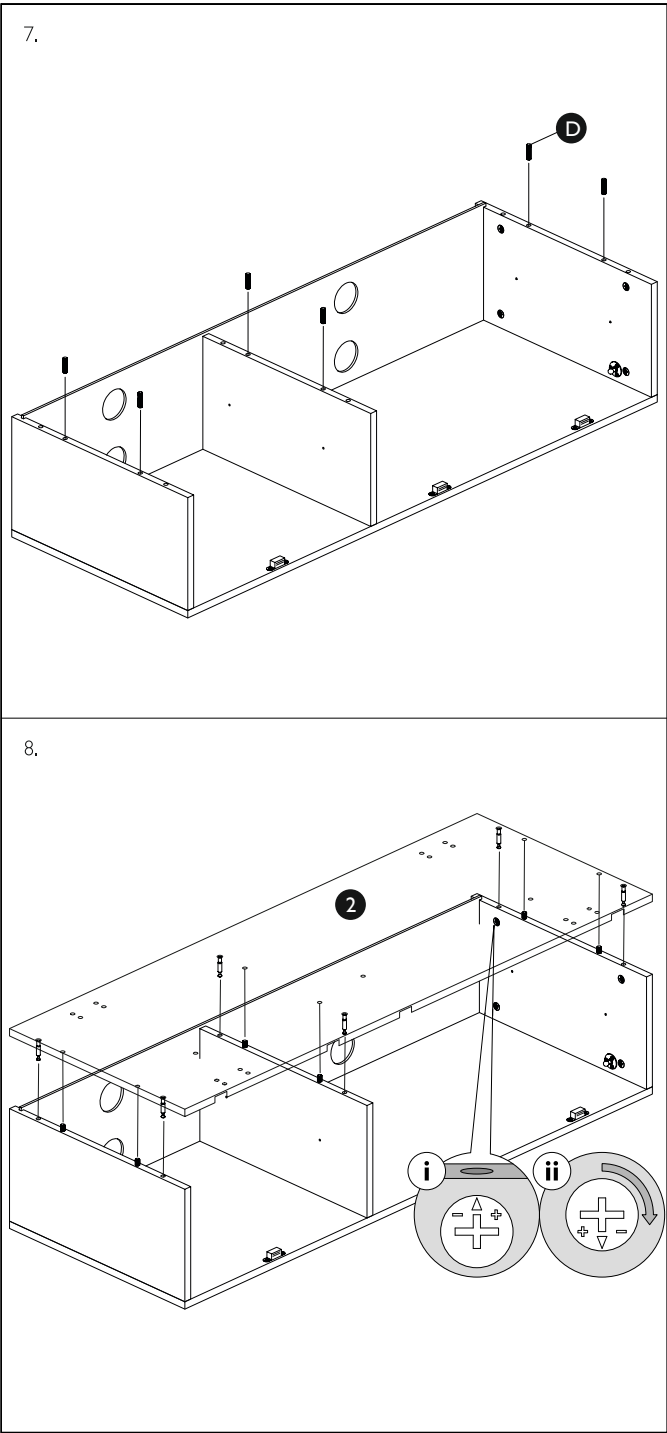


5.

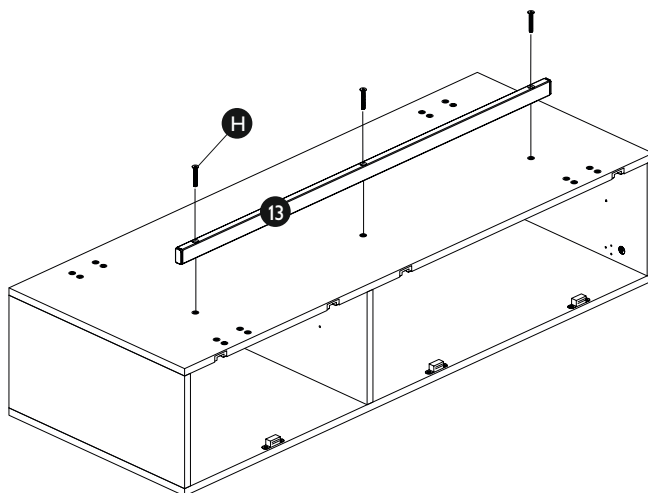


6.

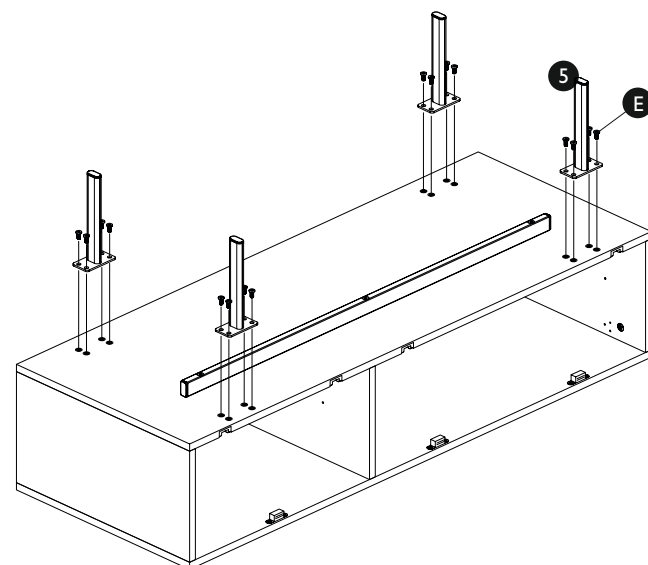




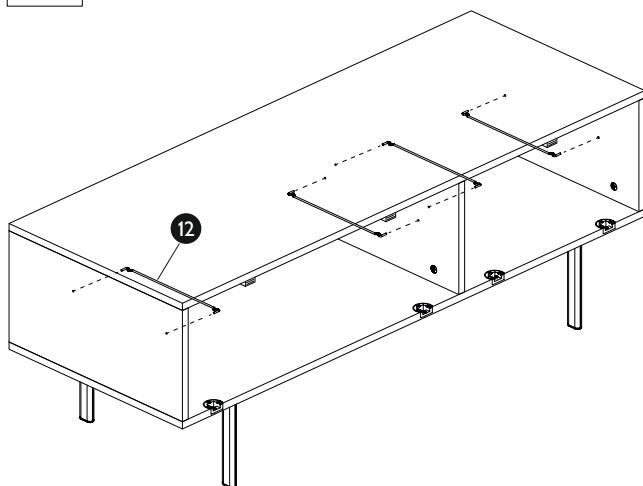
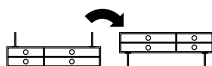
9.



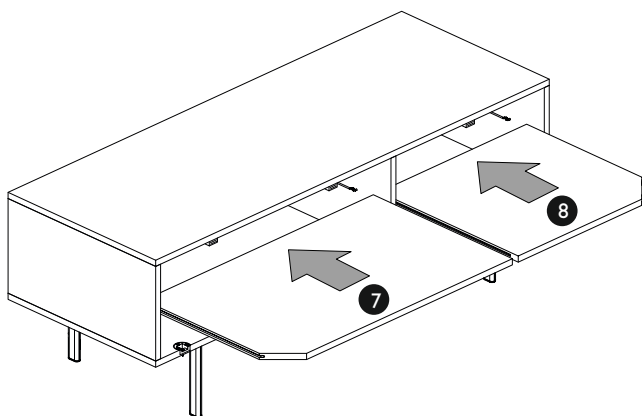
10.

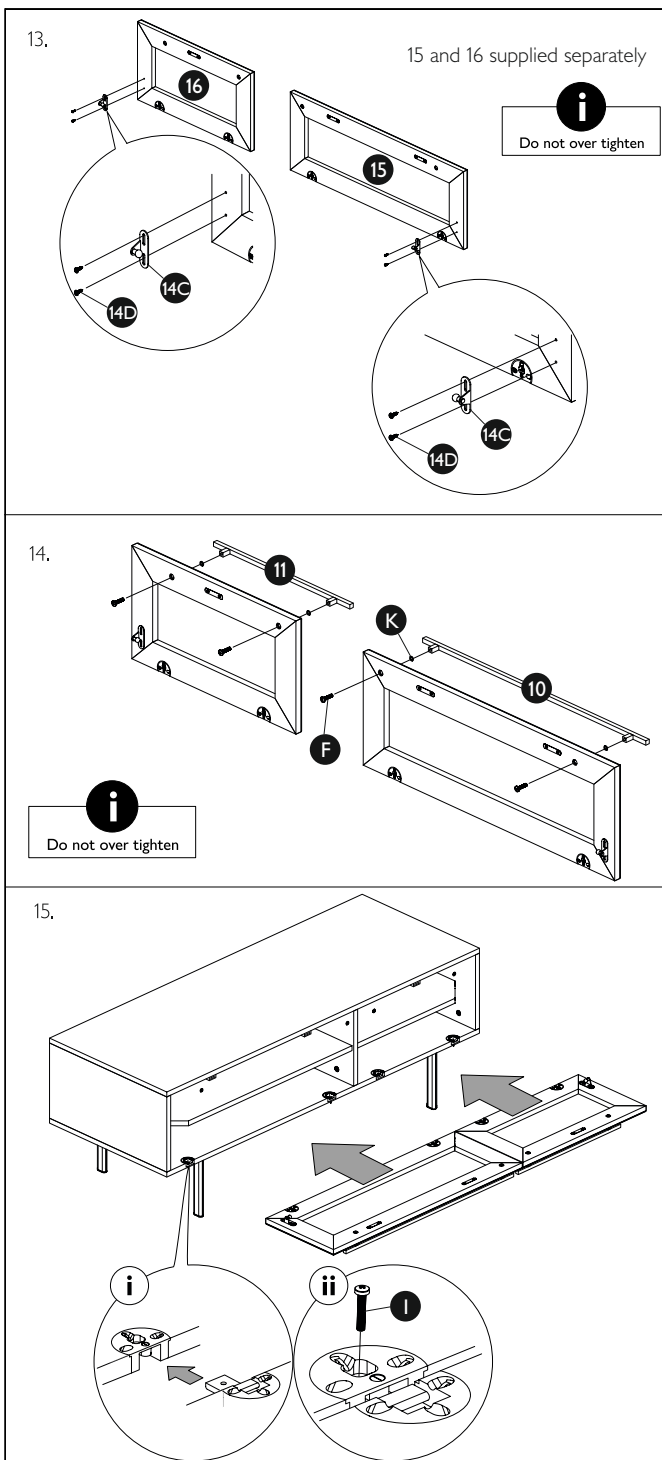


11.



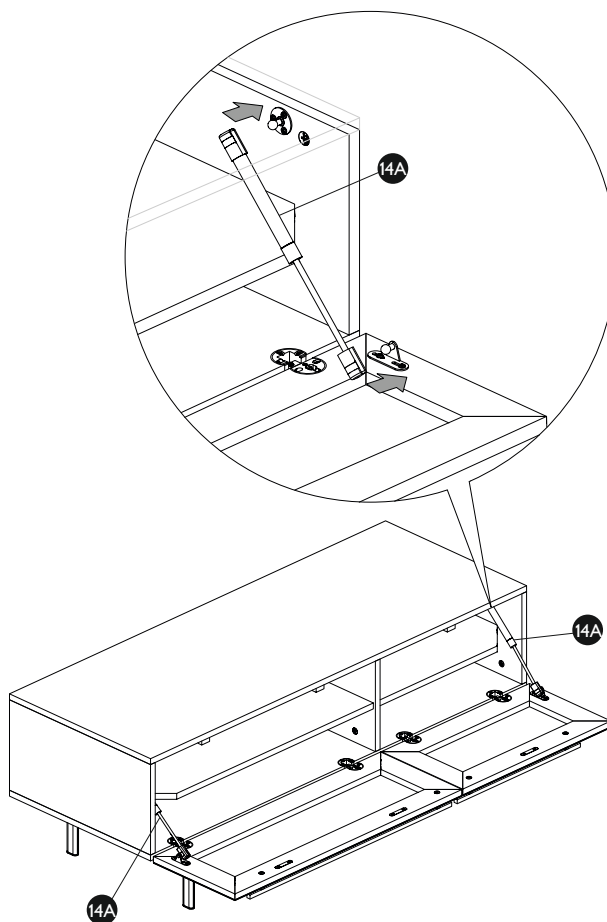
12.





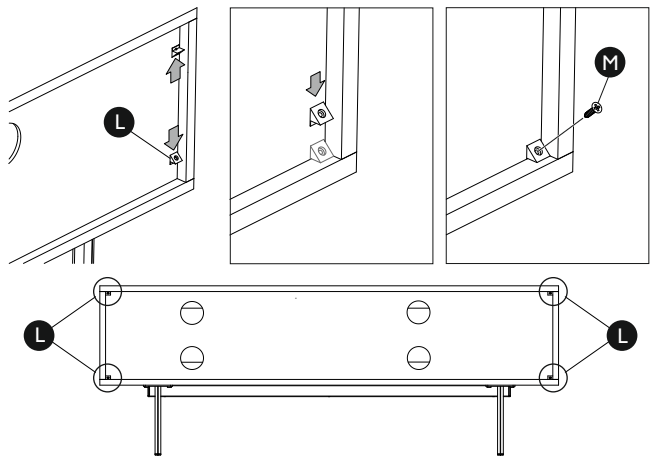
16.

Make sure the doors are aligned correctly before fitting the gas strut 14A.
If you need to adjust the doors see the back page for details.



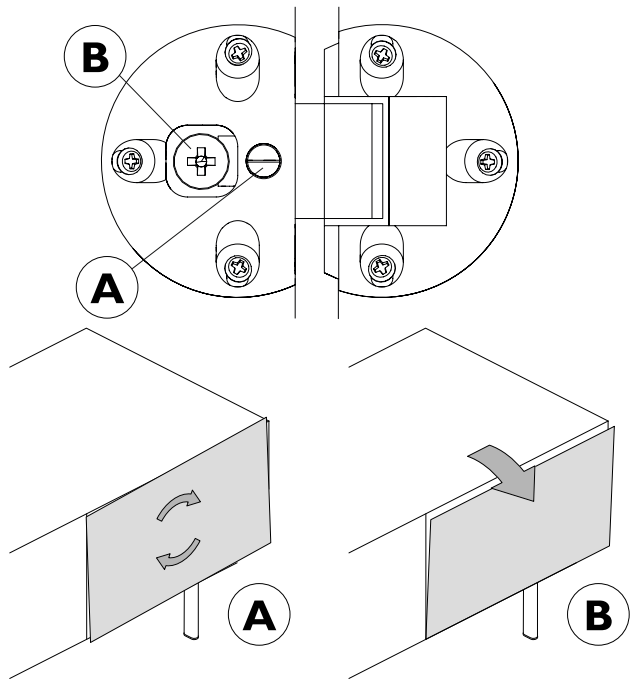
You may need to push 14A firmly
to clip it into place.

17.



Door adjustment:

Screws A and B adjust the door to ensure it fits perfectly straight.



Retain these instructions for future reference,



John Lewis Partnership
171 Victoria Street
London SW1E 5NN
johnlewis.com

467714rev00