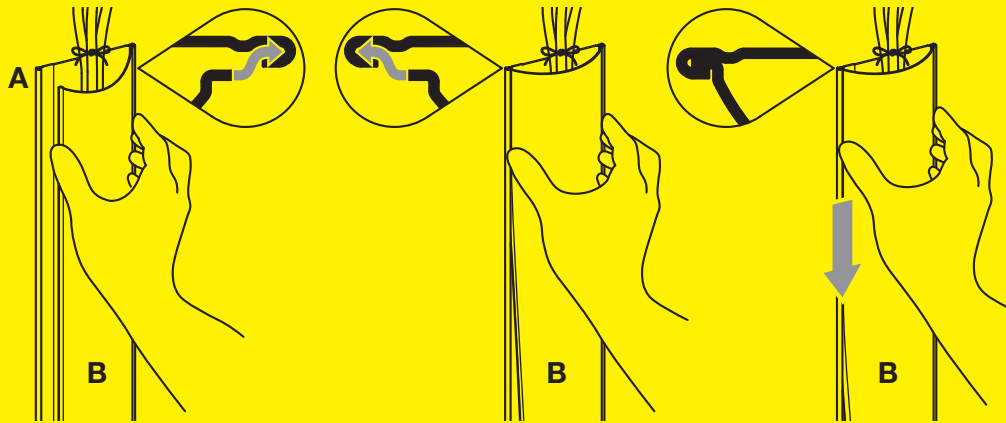


# 5 Attach Cover Strip

With cables in place, hook one side of Cover Strip **B** into Wall Strip **A**.

Working from the top, squeeze Cover Strip **B** until the other side hooks into place, then slide thumb downwards until the rest of Cover Strip **B** is hooked into place.



**TIP** To make it easier to keep cables in place while attaching Cover Strip **B**, you can tie a small string or cable tie around your cables at the top and bottom.



Scan to watch an installation video  
or visit [avfgroup.com/za180w](http://avfgroup.com/za180w)



## Finishing Touch

For a professional finish, paint your cable management to match your decor.



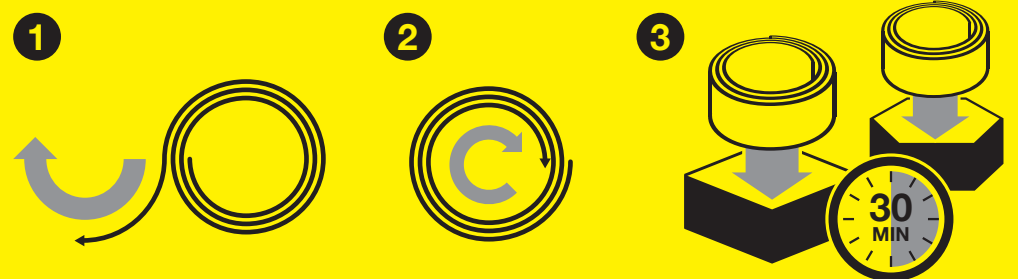
# STOP!

## FLATTEN BEFORE INSTALLATION

### AND ENSURE WALL IS CLEAN

### TO FLATTEN:

Unroll both strips, then roll back up in the opposite direction and place back in the packaging. Leave for at least 30 minutes.



**TIP**

- To avoid creasing, first roll a wider loop, then tighten to fit inside box.
- While you wait, consider cleaning and drying the wall area where you intend to apply the product.

Once unrolled, the strips will be flatter.



SCAN

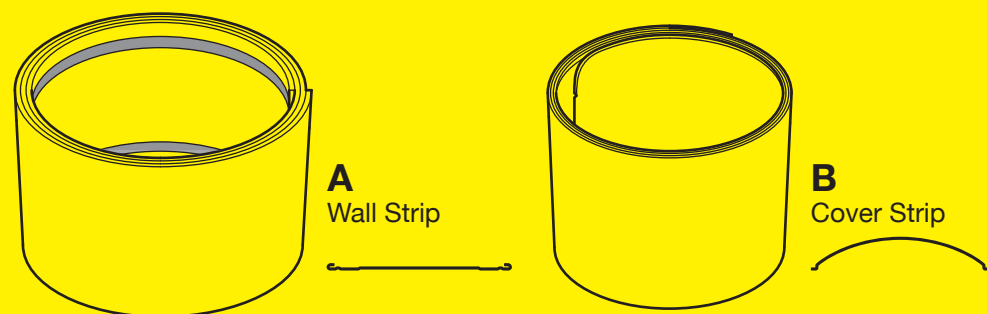
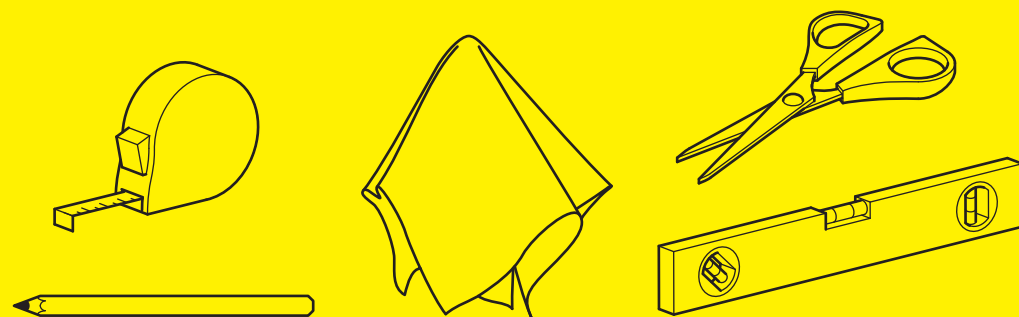
- Installation video
- *Instrucciones en español*

[avfgroup.com/za180w](http://avfgroup.com/za180w)



**Please read full instructions before installing** →

**CUSTOMER SERVICES HELPLINE:**  
**1-800 667 0808 (USA) +44 (0) 333 320 0463 (UK)**  
[www.avfgroup.com](http://www.avfgroup.com)

**PARTS INCLUDED:****RECOMMENDED TOOLS:**

**Ensure strips A and B are flat before installing**

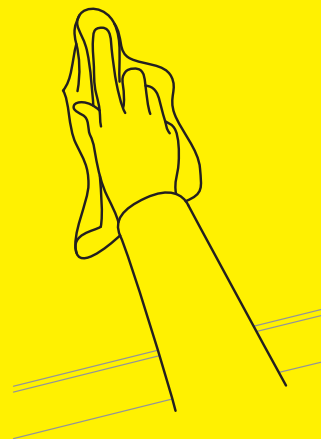
**TIP**

Ensure the wall is clean and dry and that you are happy with the positioning before applying the adhesive strips to the wall.

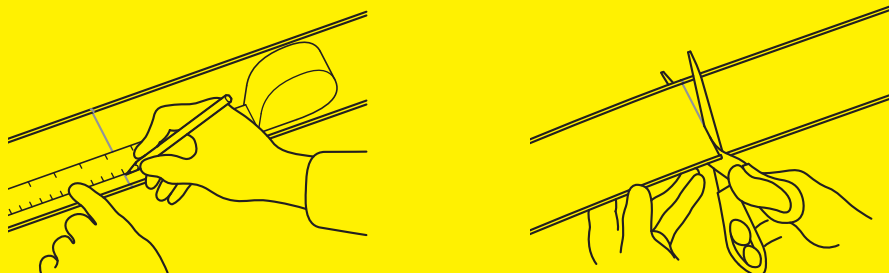
**1 Prepare Wall**

Clean the wall thoroughly to remove any dirt or loose paint.

Ensure the wall is clean and dry before installation.

**2 Measure and Cut**

Measure and cut strips **A** and **B** to fit your required space.

**3 Apply Wall Strip**

Remove backing paper from adhesive strips on Wall Strip **A**.

Use a spirit level as a guide and apply Wall Strip **A** to the wall.

**4 Secure Wall Strip**

Use a clean, dry cloth to firmly press and rub along the channels.

This will help create a strong bond with your wall.

*Repeat after 5 minutes.*

