

Exploded view diagram of a 1x1 A box. The box is shown in the center, with a mounting plate positioned above it. The mounting plate has four circular holes, one on each side, aligned with the box's top and bottom flanges. The box has a central rectangular opening and four circular holes on its front face. The mounting plate is labeled 'A' and '1x1'.

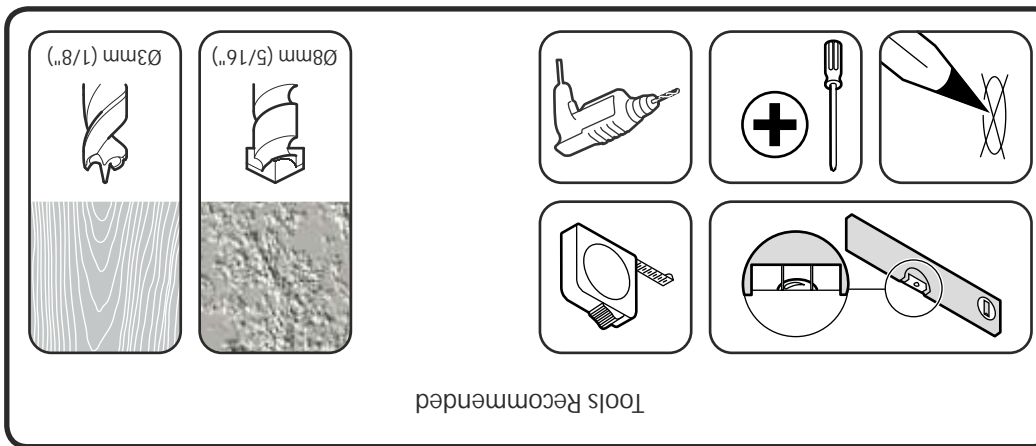


**Read through ALL instructions before commencing installation.**  
**If you have any questions about this product or issues with installation contact**  
**the customer services help line before returning this product to the store.**

***This Product is designed to fit most TVs up to 40" weighing up to 20kg.***

Compatibility is based on new and recent TV models, some older TVs from 32" up may require a larger TV Mount. If you are unsure or need advice please call our **Consumer Helpline\*** on **0333 320 0463**

AVF Group Ltd. Hortonwood 30, Telford, Shropshire, TF1 7YE, England  
(\*Consumer Helpline open Monday to Friday during AVF office hours)



Retain all packaging in case the mount needs to be returned.

You will not need all these parts, so expect there to be some left over depending upon the specification of your TV.

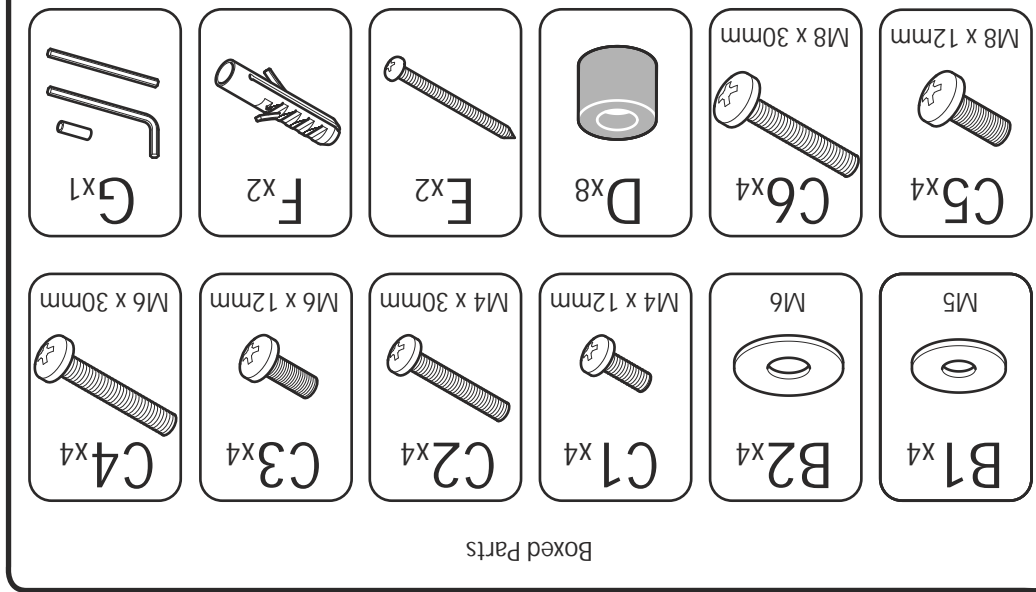
This product is intended for indoor use only. Use of this product outdoors could lead to failure and personal injury.

It is the responsibility of the installer to ensure that the mounting wall is of a suitable standard and void of any services (eg gas, electricity, water etc).

AVF accept no responsibility for any damage or loss caused by installing this product in a sub standard wall.

Periodically check all nuts and bolts are tight.

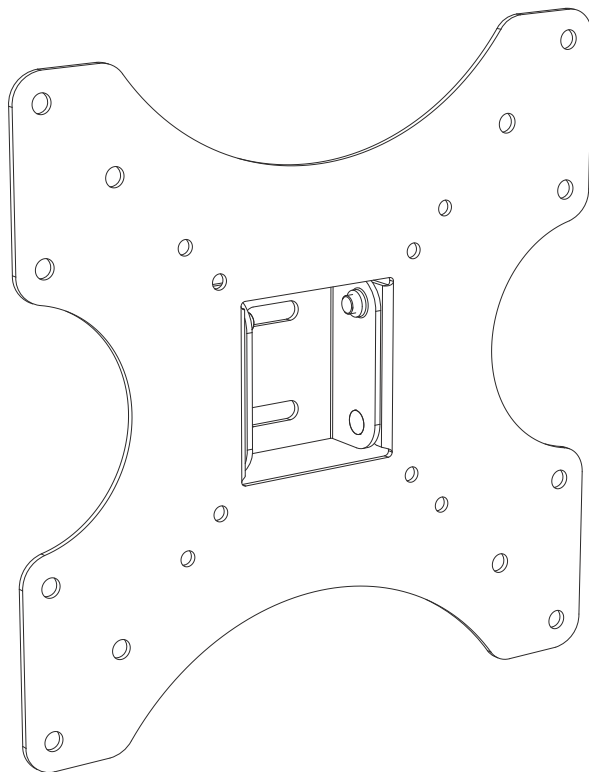
standard wall. Periodically check all nuts and bolts are tight.



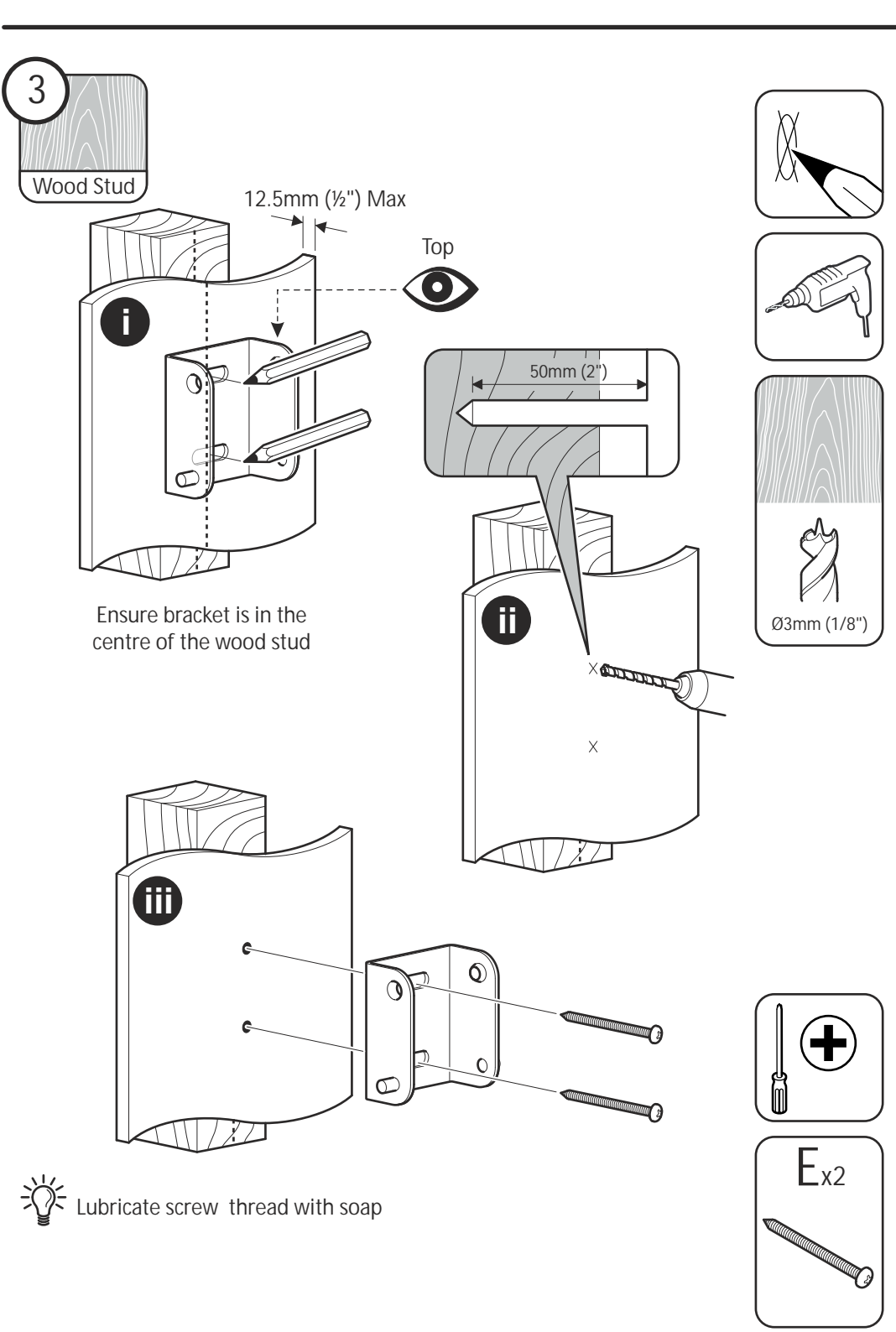
Boxed Parts

# SAL21

Leaflet No. 466551rev00



②



3

