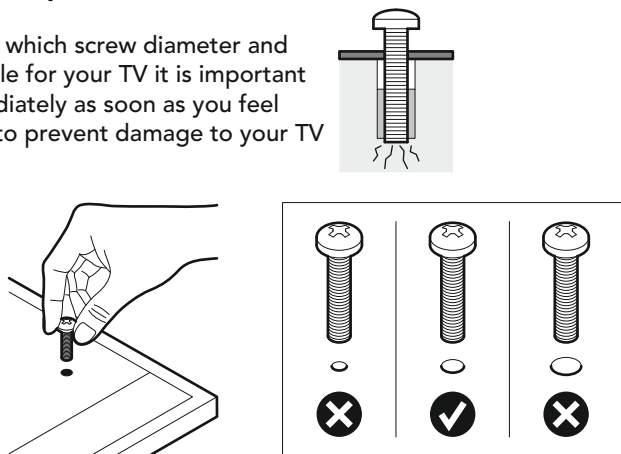


4 Deciding the correct screw and spacer combination

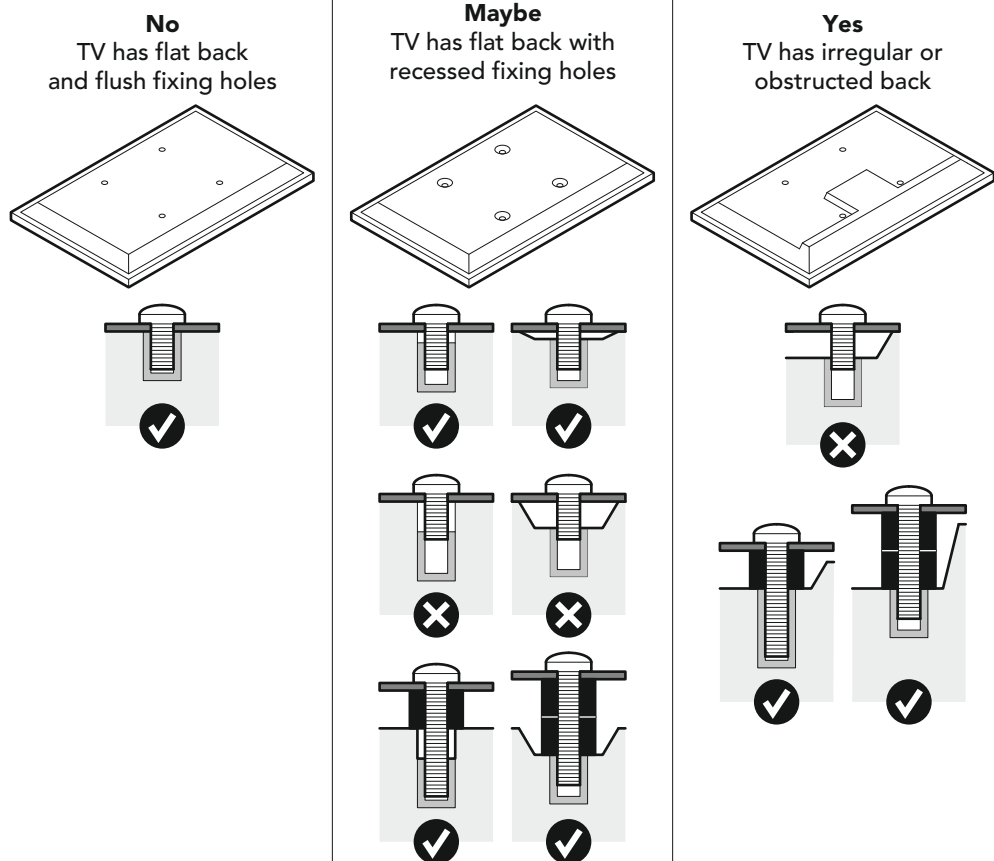
! When deciding which screw diameter and length is suitable for your TV it is important to **STOP** immediately as soon as you feel any resistance to prevent damage to your TV

You are provided with 3 diameters of TV fixing screws, **M4, M6 and M8**. Determine the screw diameter that fits and remember for the next step

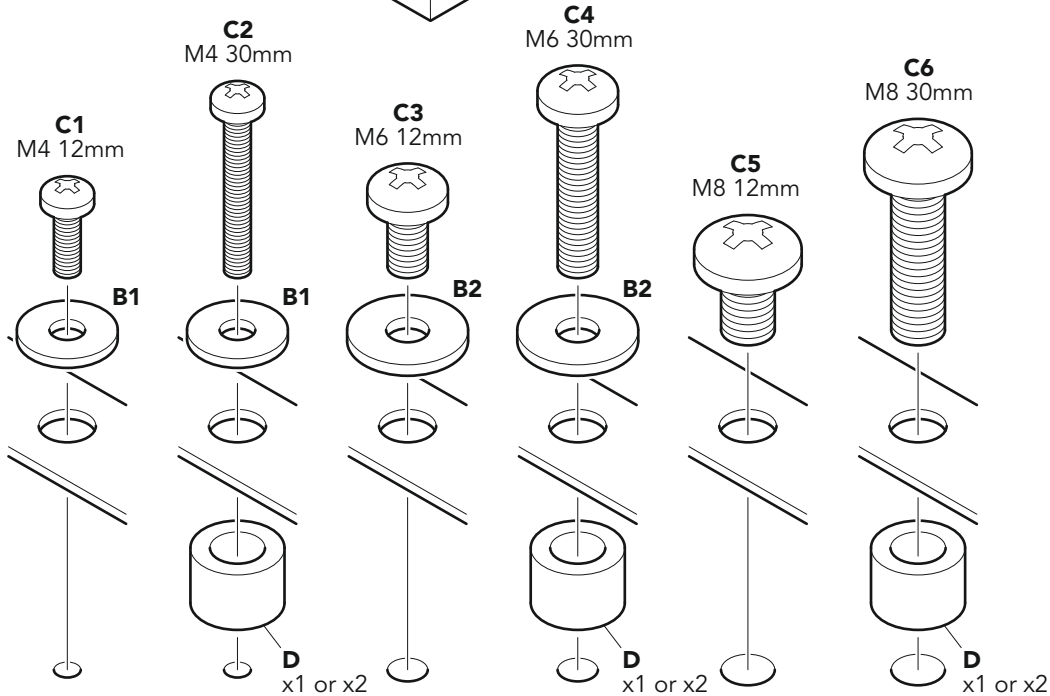
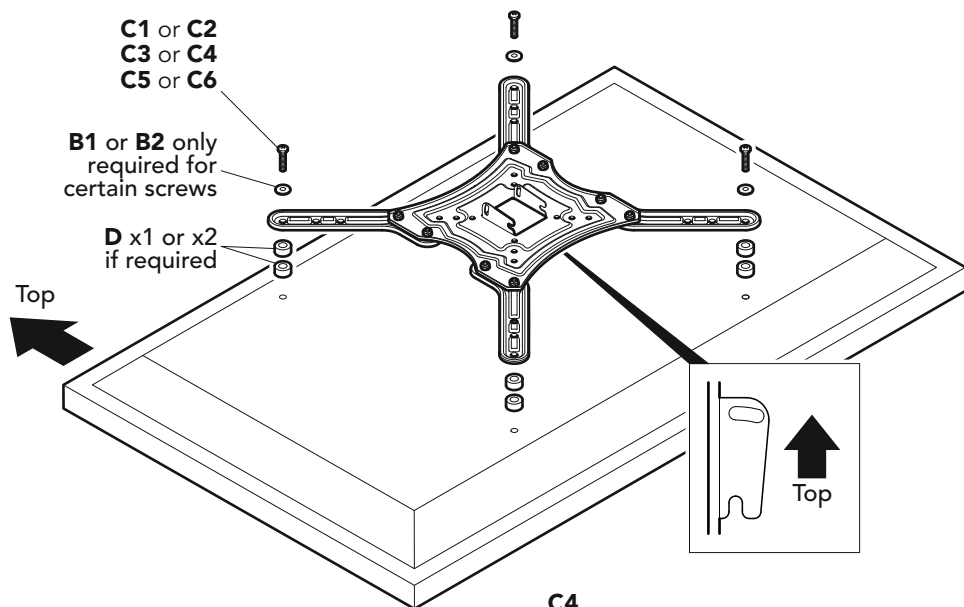


Do I need to use spacers D?

Spacers are provided so that you can achieve the correct fit between the back of your TV and Mounting Plate, please see below for examples of when spacers are required



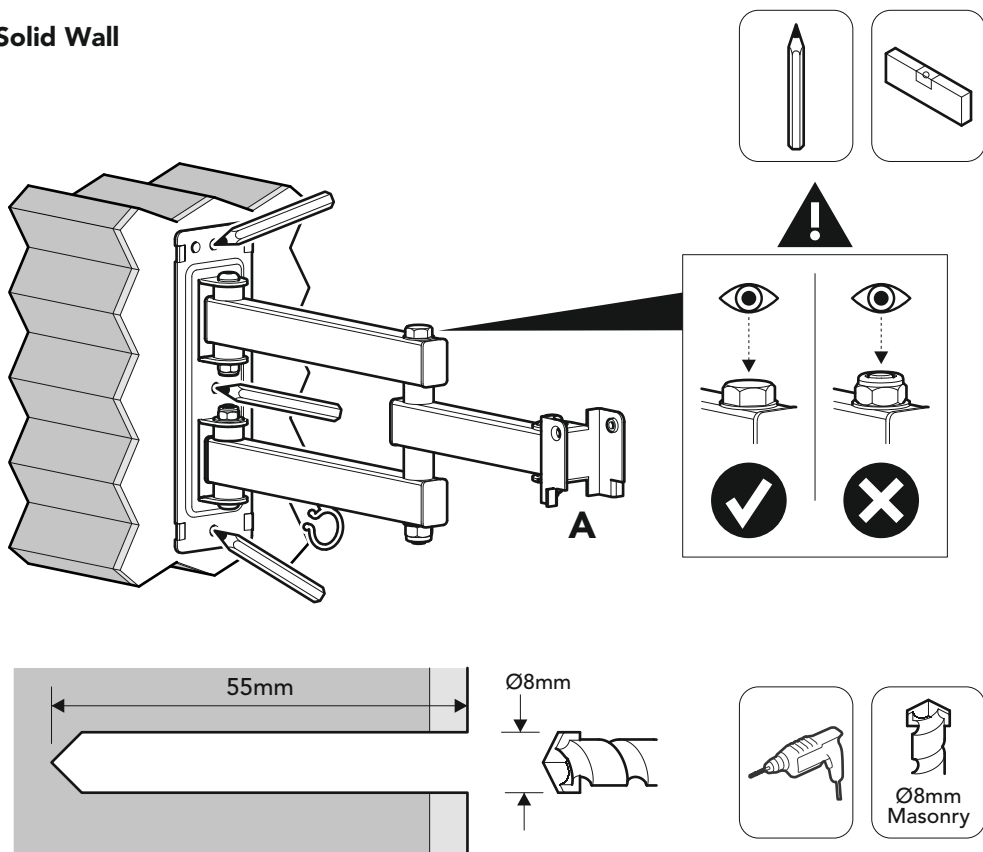
5 Fitting the TV Mounting Plate



! Attach the bracket to the back of your TV using a suitable combination of screw, washer and spacer combinations. **DO NOT OVERTIGHTEN!**

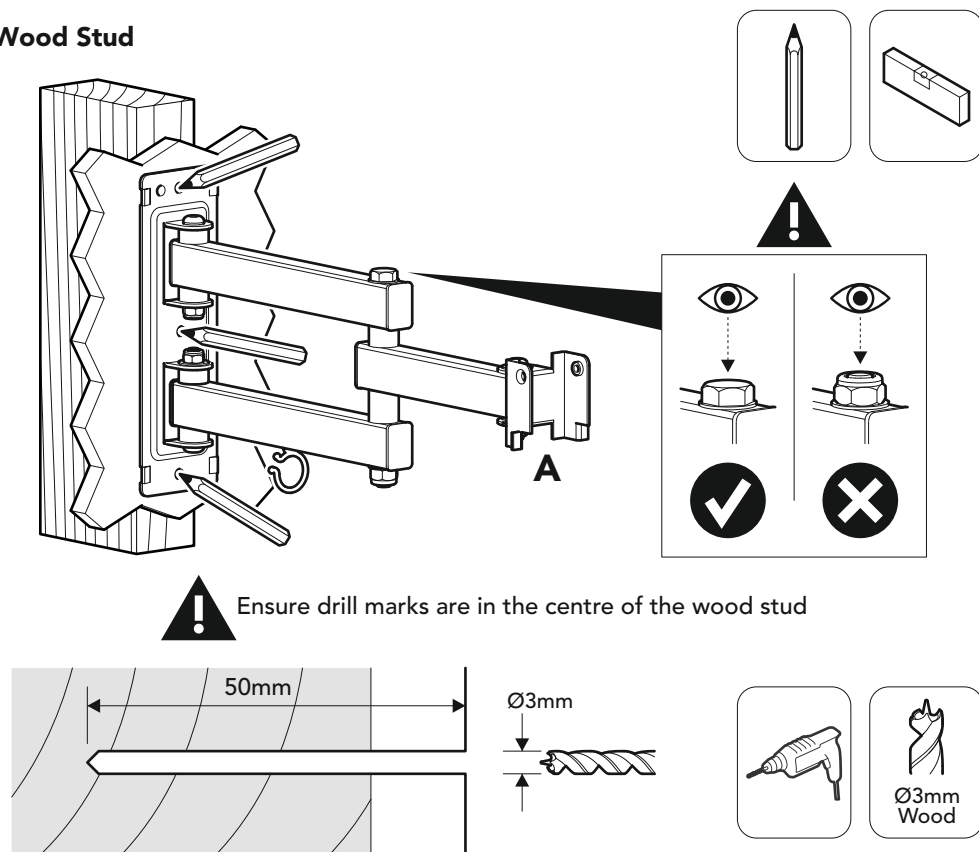
💡 After completing step 5 you will have fittings left over, please keep in a safe place for future reference

6 Solid Wall



! Tighten with hand tools only **💡** Lubricate screw thread with soap

6 Wood Stud



! Do not use **F** wall plugs in wood stud **!** Tighten with hand tools only **💡** Lubricate screw thread with soap