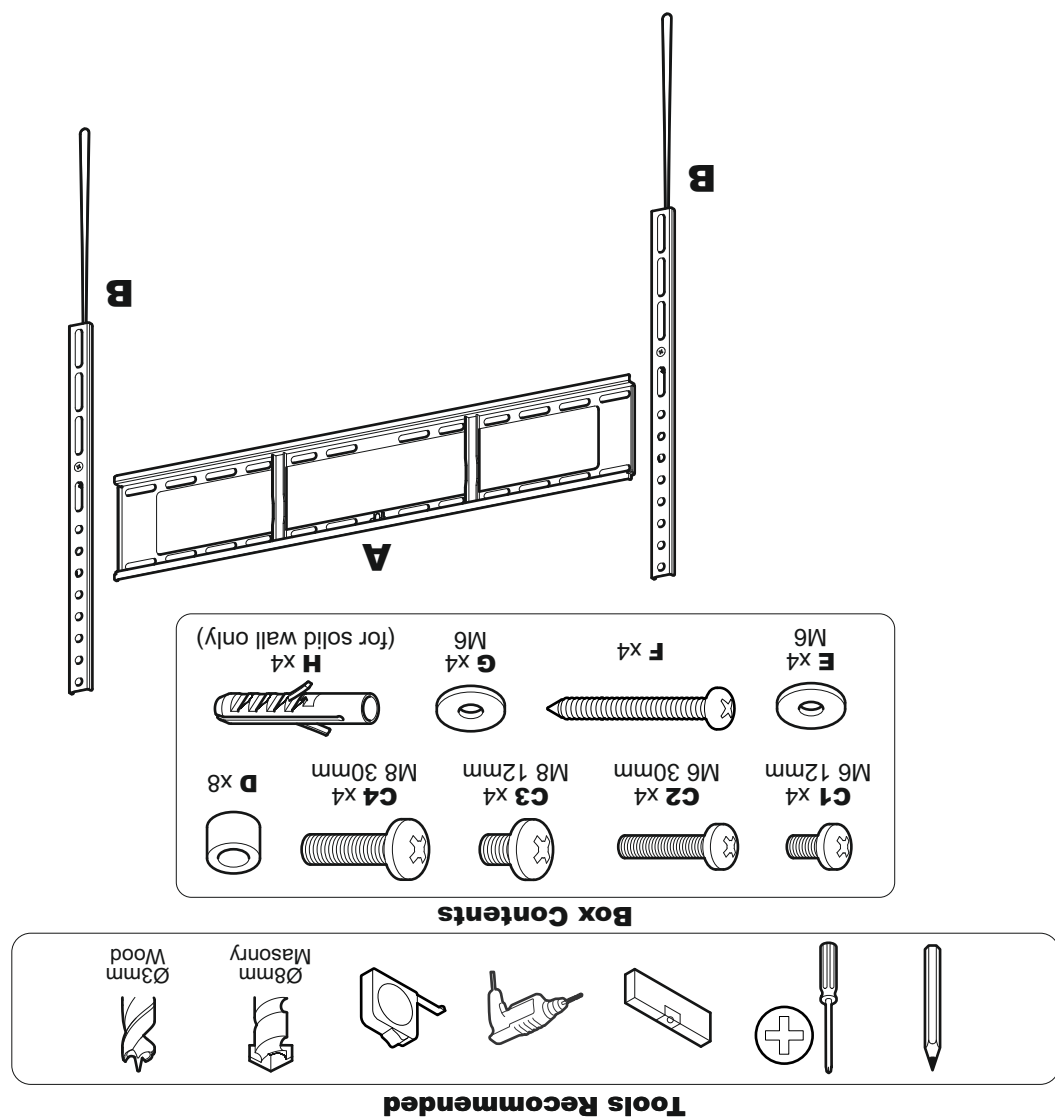


Your TV mount fits the following TV fixing sizes

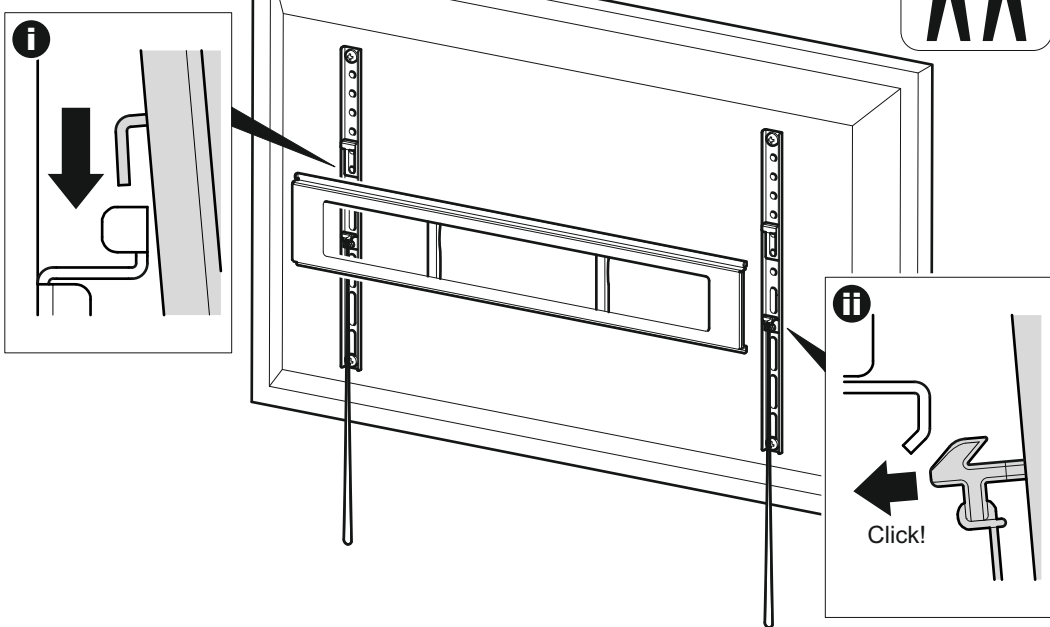
1 Measure the TV fixing holes



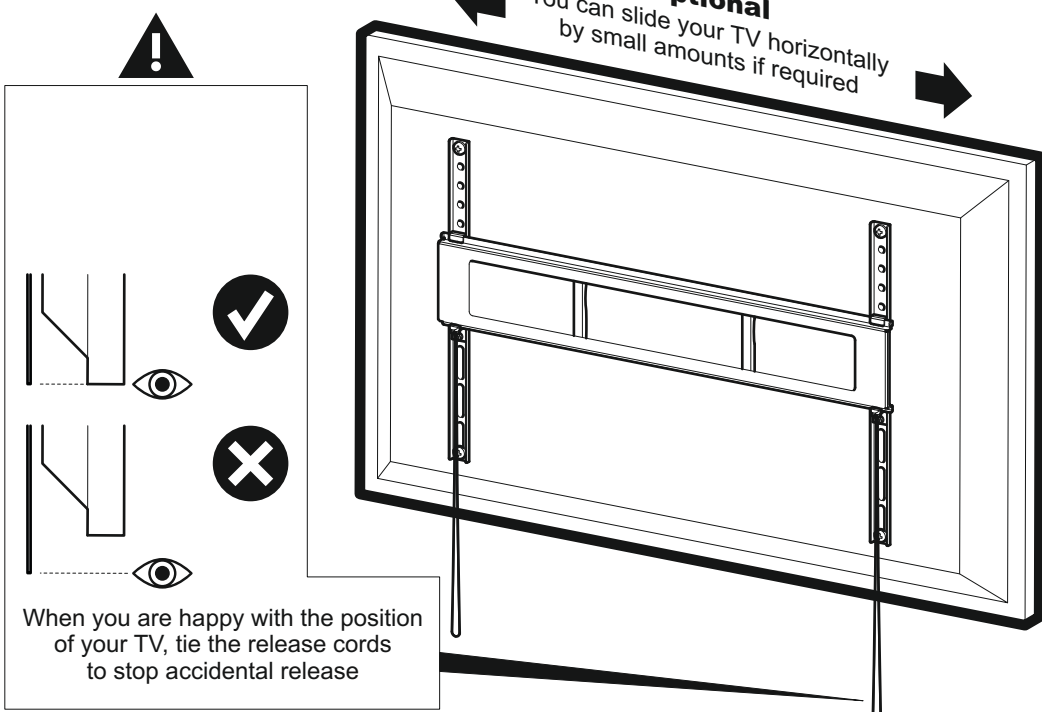
IF YOU ARE IN ANY DOUBT, CONSULT A QUALIFIED CONTRACTOR

Retain all packaging in case the bracket needs to be returned.
 Contents may vary from photograph/illustrations.
 You will not need all these parts, so expect there to be some left over depending upon the specification of your TV.
 This product is intended for indoor use only. Use of this product outdoors could lead to failure and personal injury.
 This product is sold as a home DIY product and as such, it is the responsibility of the installer to ensure the product is correctly installed.
 It is the responsibility of the installer to ensure that the mounting wall is of a suitable standard and void of any services (eg gas, electricity, water etc).
 TESCO accept no responsibility for any damage or loss caused by installing this product in a substandard wall.
 Periodically check all nuts and bolts are tight.

5 Connect TV



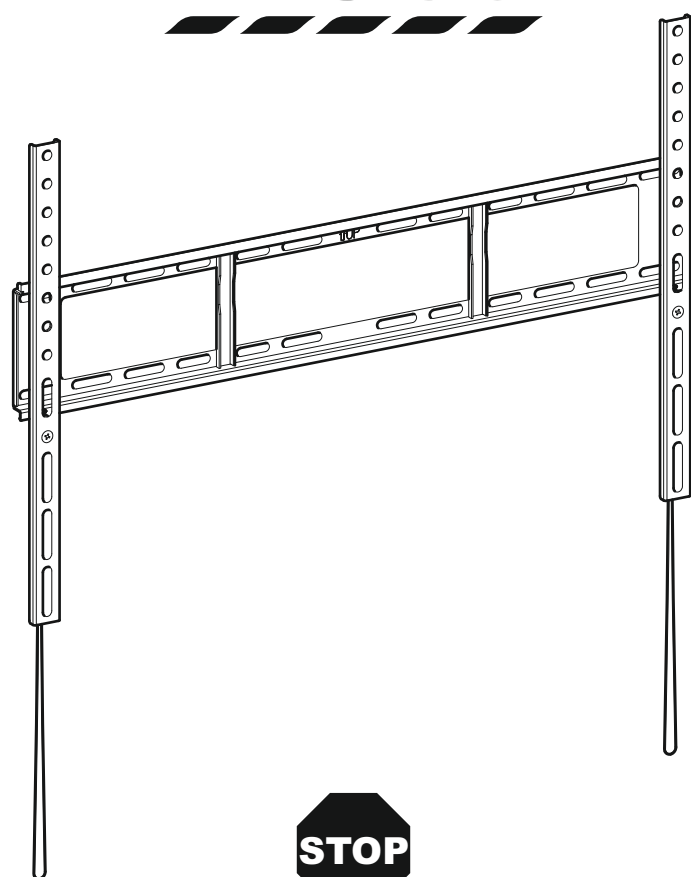
6 Finishing Touch



TC4

466320 rev02

TESCO



STOP

Read the operating instructions and keep them in a safe place.
If you have any questions about this product or issues with installation
contact the help line before returning this product to the store.

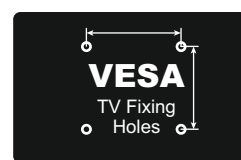
Help Line: **0333 320 8027**

Monday - Thursday 08:30 - 17:00 Friday 08:30 - 16:00
Calls charged at local rate



37-65"

TVs

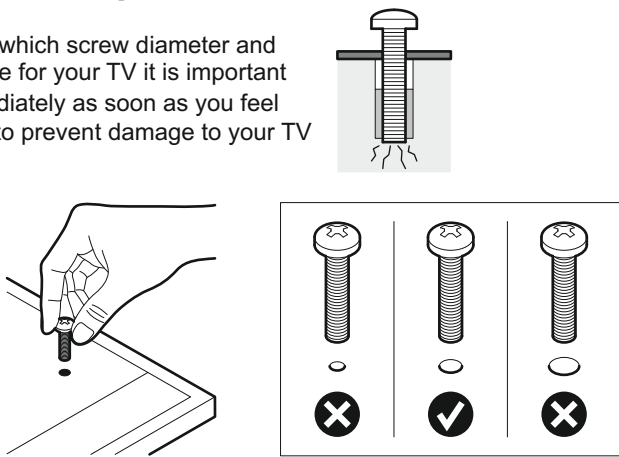


100 x 100mm, 200 x 100mm
200 x 200mm, 300 x 300mm
400 x 200mm, 400 x 400mm
600 x 100mm, 600 x 200mm
600 x 400mm

2 Deciding the correct screw and spacer combination

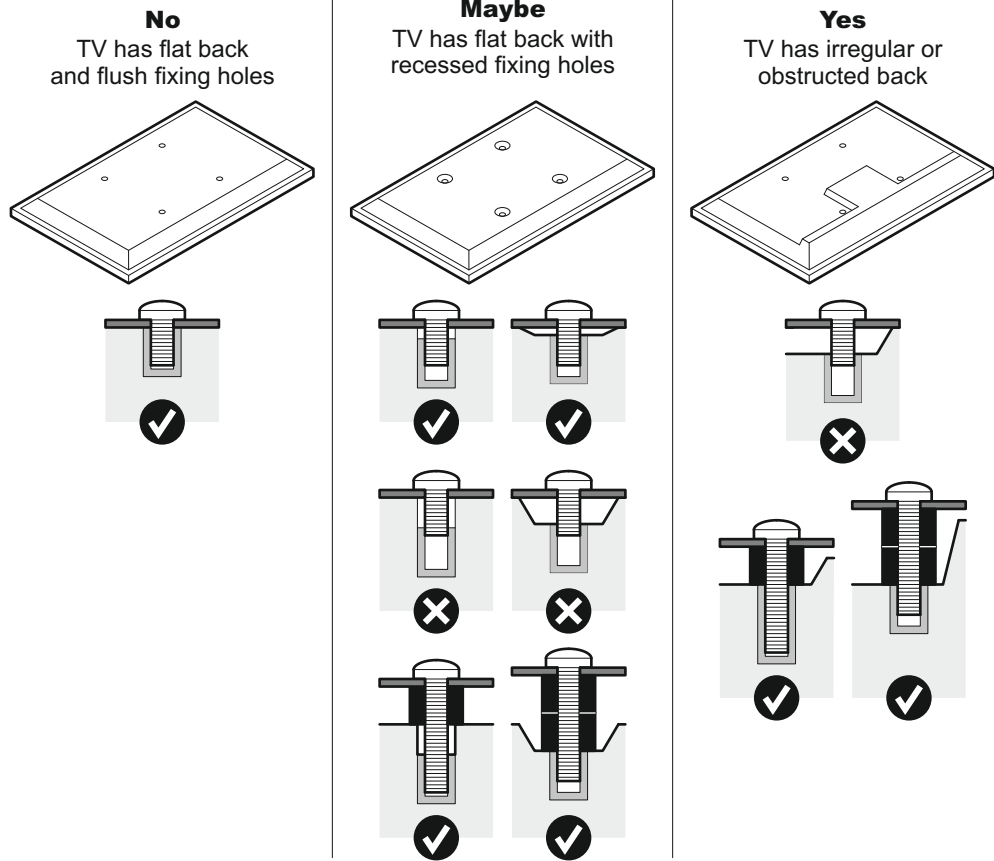
! When deciding which screw diameter and length is suitable for your TV it is important to **STOP** immediately as soon as you feel any resistance to prevent damage to your TV

You are provided with 2 diameters of TV fixing screws, **M6** and **M8**. Determine the screw diameter that fits and remember for the next step

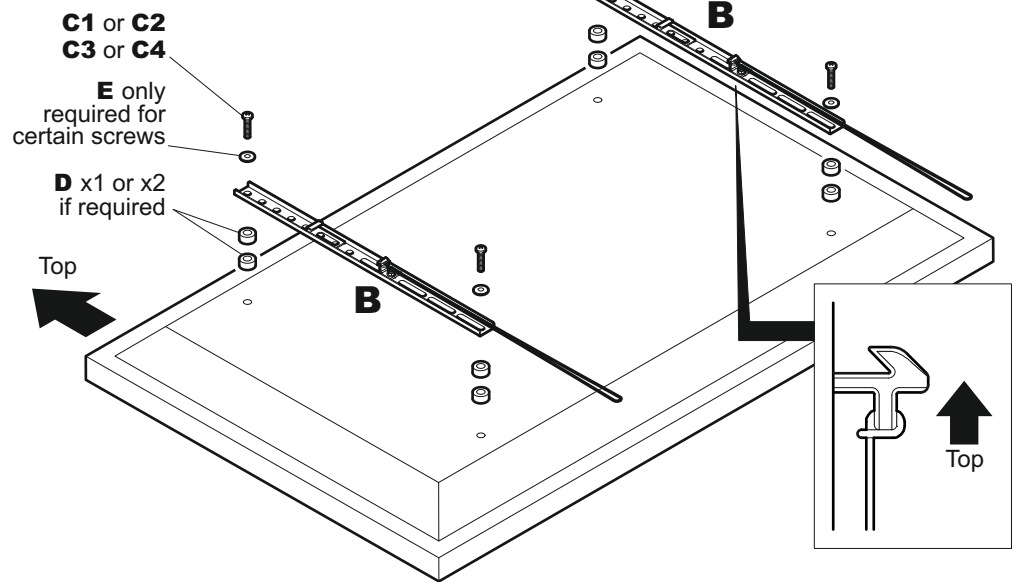


Do I need to use spacers **D**?

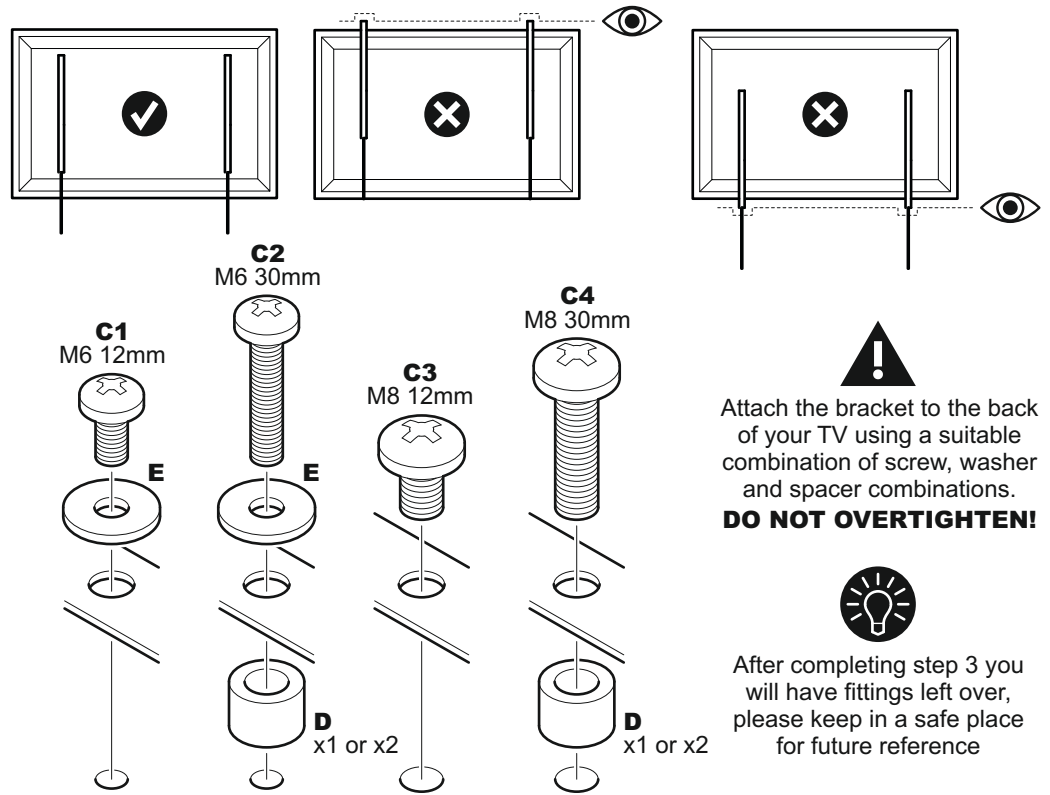
Spacers are provided so that you can achieve the correct fit between the back of your TV and Mounting Plate, please see below for examples of when spacers are required



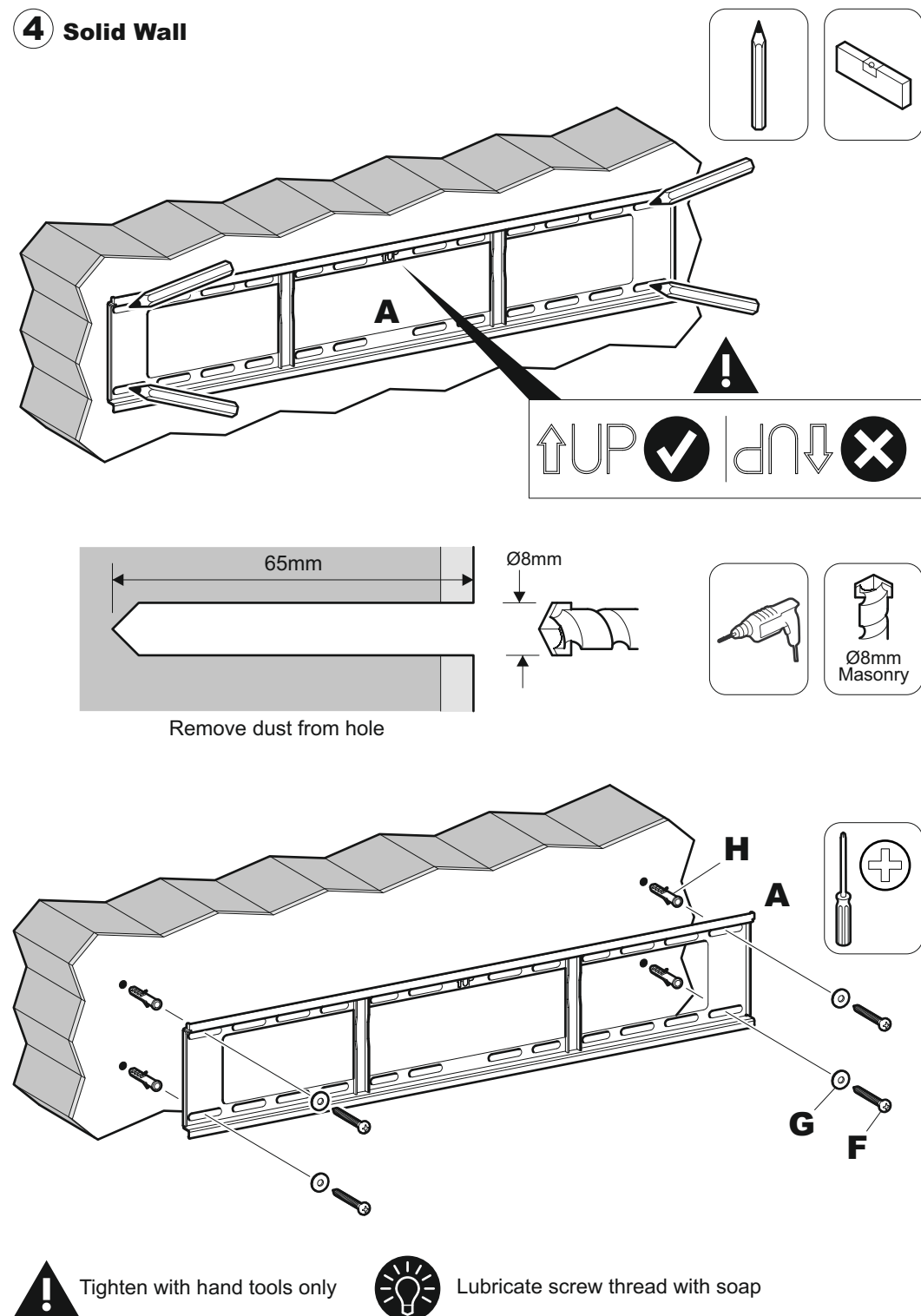
3 Fitting the TV Brackets



Ensure TV Brackets **B** do not protrude at the top or bottom of your TV



4 Solid Wall



4 Wood Stud

