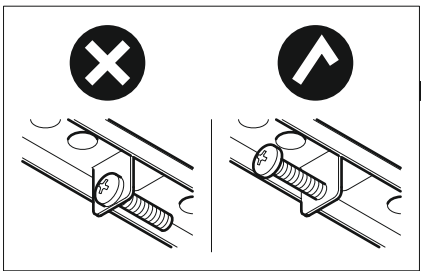
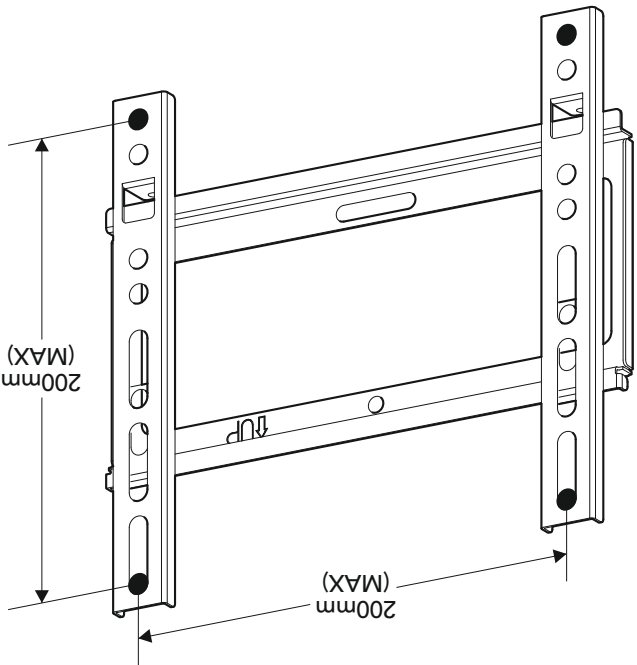


Retain all packaging in case the bracket needs to be returned.
Contents may vary from photography/illustrations.
You will not need all these parts, so expect there to be some left over depending upon the specification of your TV.
This product is intended for indoor use only. Use of this product outdoors could lead to failure and personal injury.
This product is sold as a home DIY product and as such, it is the responsibility of the installer to ensure the product is correctly installed.
It is the responsibility of the installer to ensure that the mounting wall is of a suitable standard and void of any services (eg gas, electricity, water etc).
TESCO accept no responsibility for any damage or loss caused by installing this product in a sub standard wall.
Periodically check all nuts and bolts are tight.
IF YOU ARE IN ANY DOUBT, CONSULT A QUALIFIED CONTRACTOR

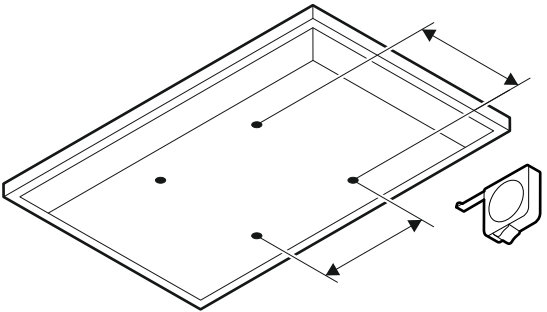
Tools Recommended



2 Prepare TV Brackets

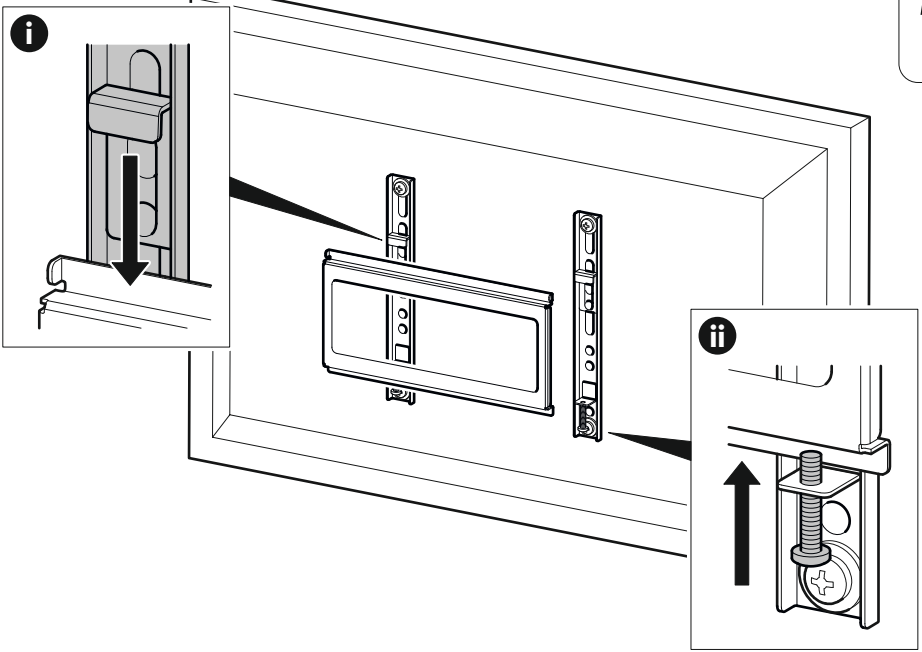


Your TV mount fits the following TV fixing sizes
50 x 50mm, 75 x 75mm,
100 x 100mm, 100 x 200mm,
200 x 100mm, 200 x 200mm

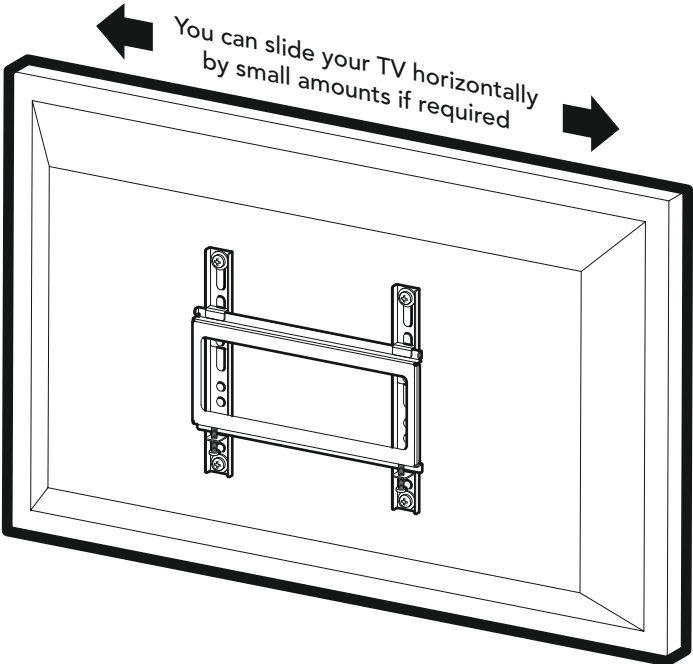


1 Measure the TV fixing holes

6 Connect TV



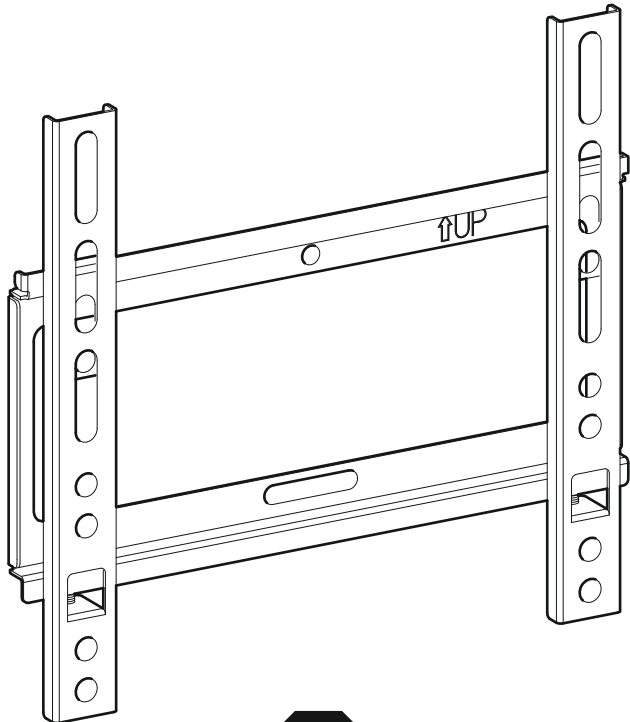
Optional



TC1

466319 rev01

TESCO



Read the operating instructions and keep them in a safe place.
If you have any questions about this product or issues with installation
contact the help line before returning this product to the store.

Help Line: 0333 320 8027

Monday - Thursday 08:30 - 17:00 Friday 08:30 - 16:00
Calls charged at local rate

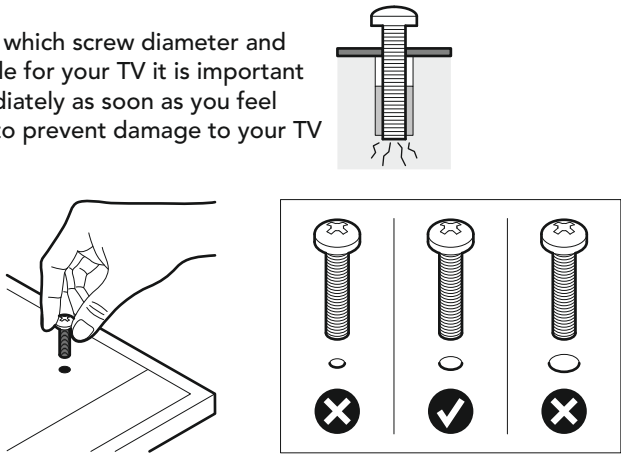


50 x 50mm, 75 x 75mm,
100 x 100mm, 100 x 200mm,
200 x 100mm, 200 x 200mm

3 Deciding the correct screw and spacer combination

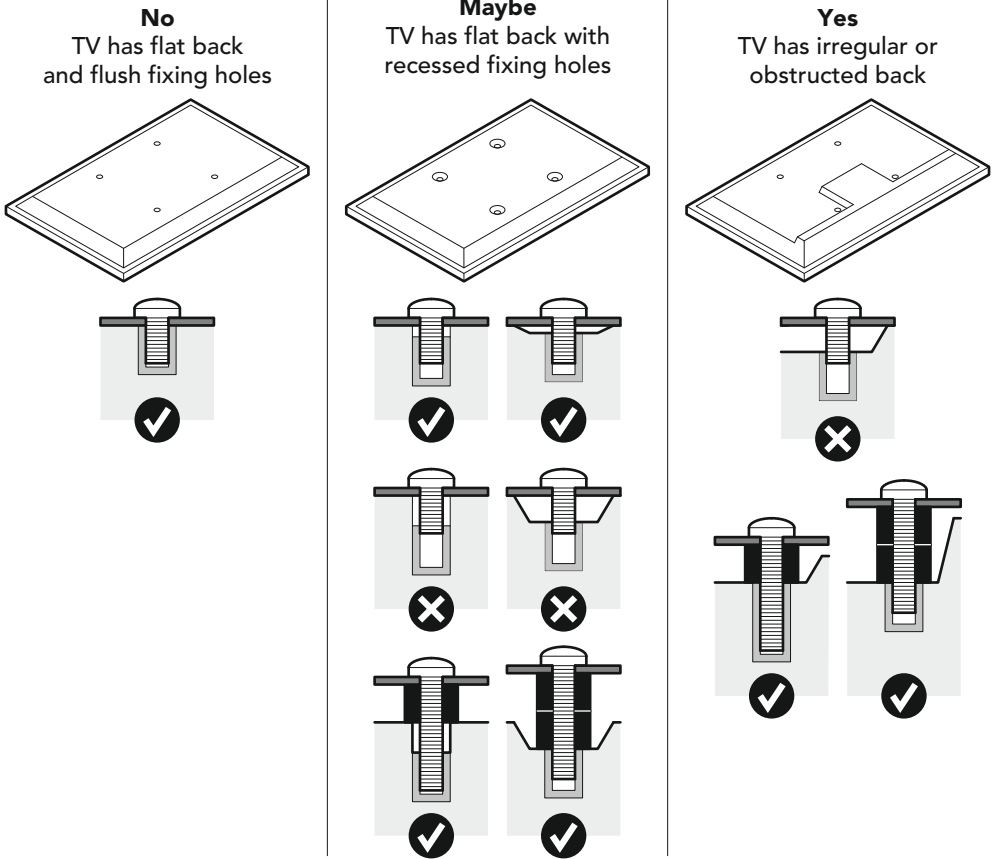
When deciding which screw diameter and length is suitable for your TV it is important to **STOP** immediately as soon as you feel any resistance to prevent damage to your TV

You are provided with 3 diameters of TV fixing screws, **M4, M6 and M8**. Determine the screw diameter that fits and remember for the next step

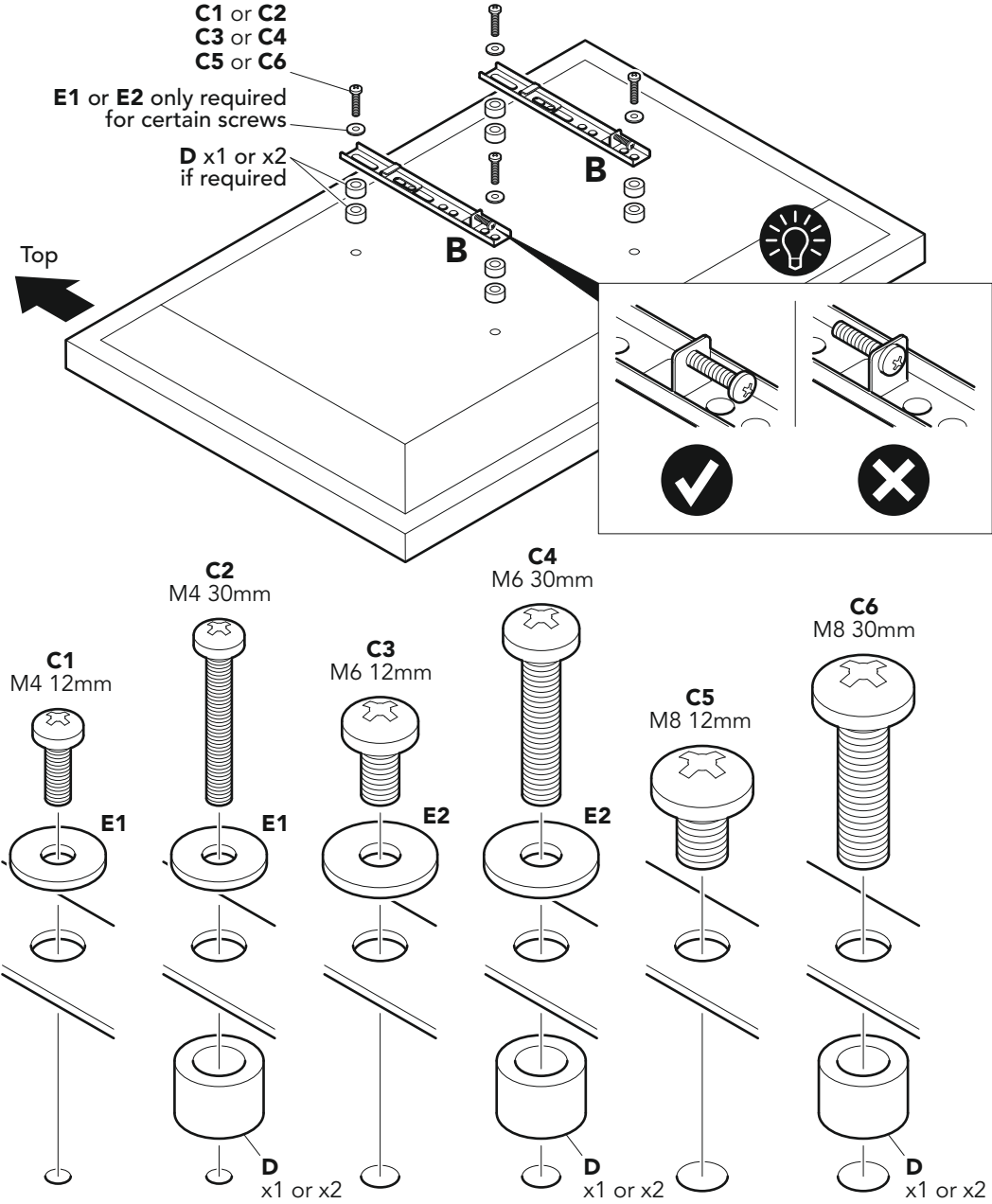


Do I need to use spacers D?

Spacers are provided so that you can achieve the correct fit between the back of your TV and Mounting Plate, please see below for examples of when spacers are required



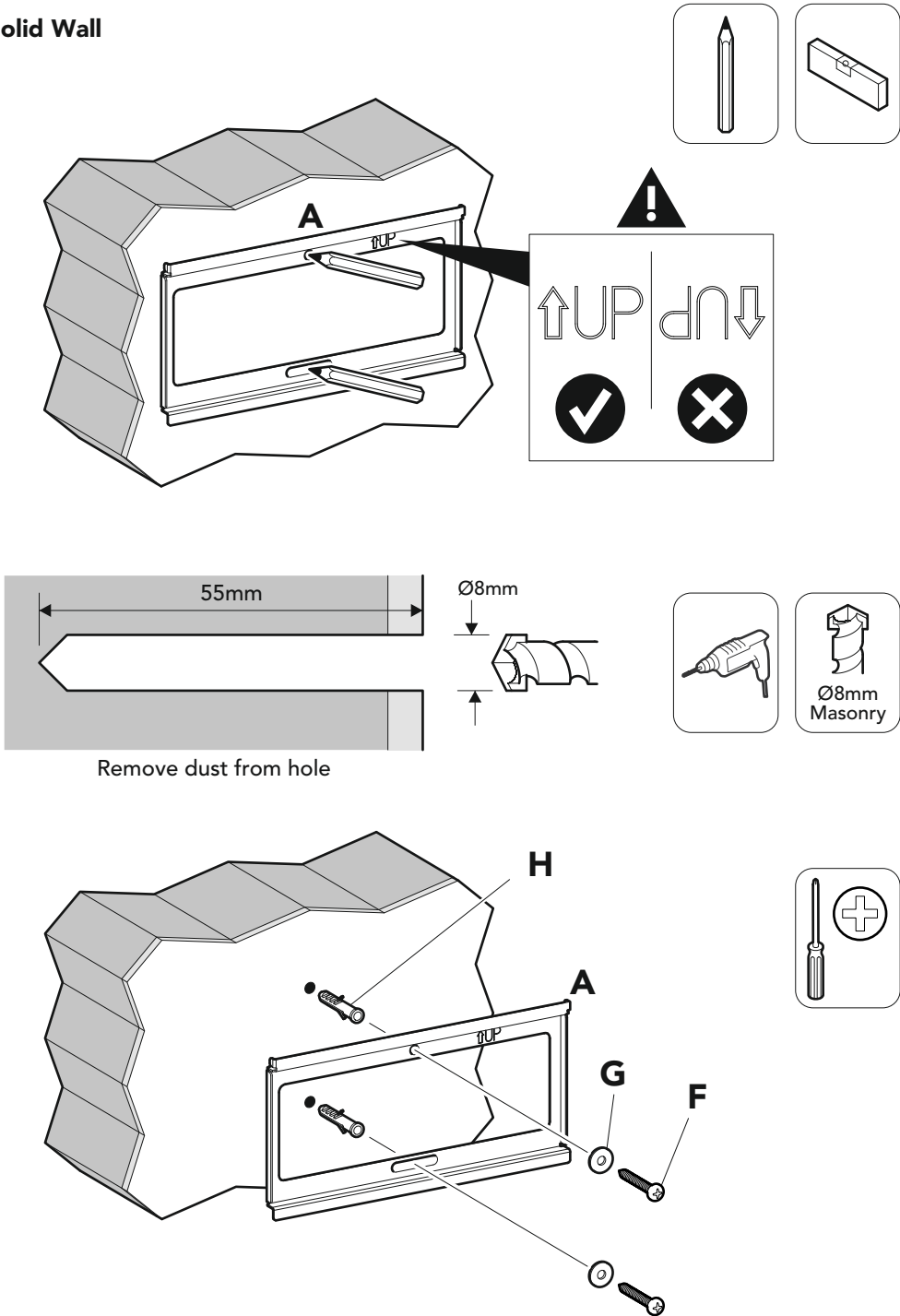
4 Fitting the TV Brackets



Attach the bracket to the back of your TV using a suitable combination of screw, washer and spacer combinations. **DO NOT OVERTIGHTEN!**

After completing step 4 you will have fittings left over, please keep in a safe place for future reference

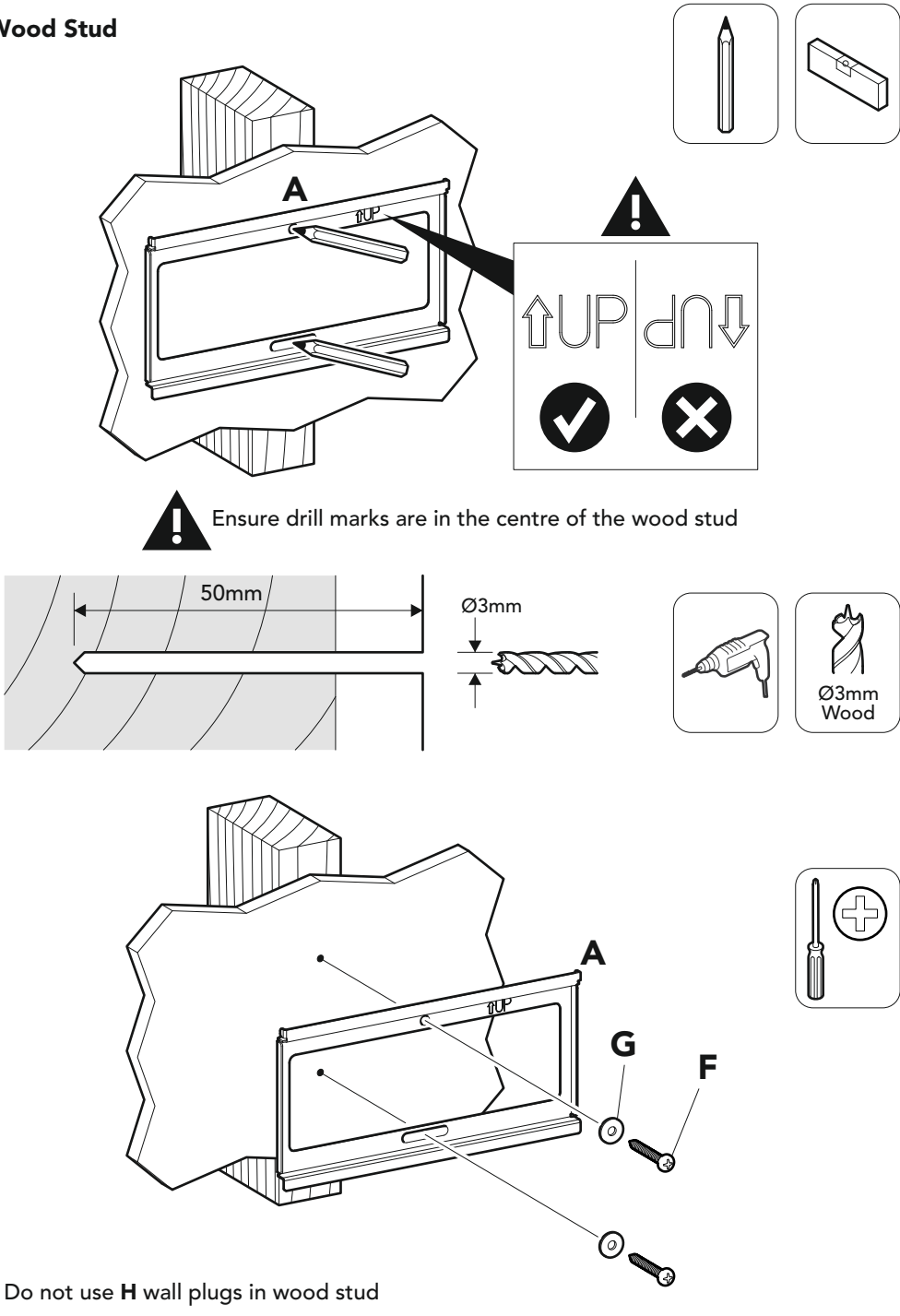
5 Solid Wall



Tighten with hand tools only

Lubricate screw thread with soap

5 Wood Stud



Do not use H wall plugs in wood stud

Tighten with hand tools only

Lubricate screw thread with soap