

Periodically check all nuts and bolts are tight.

Crown AV accept no responsibility for any damage or loss caused by installing this product in a sub standard wall.

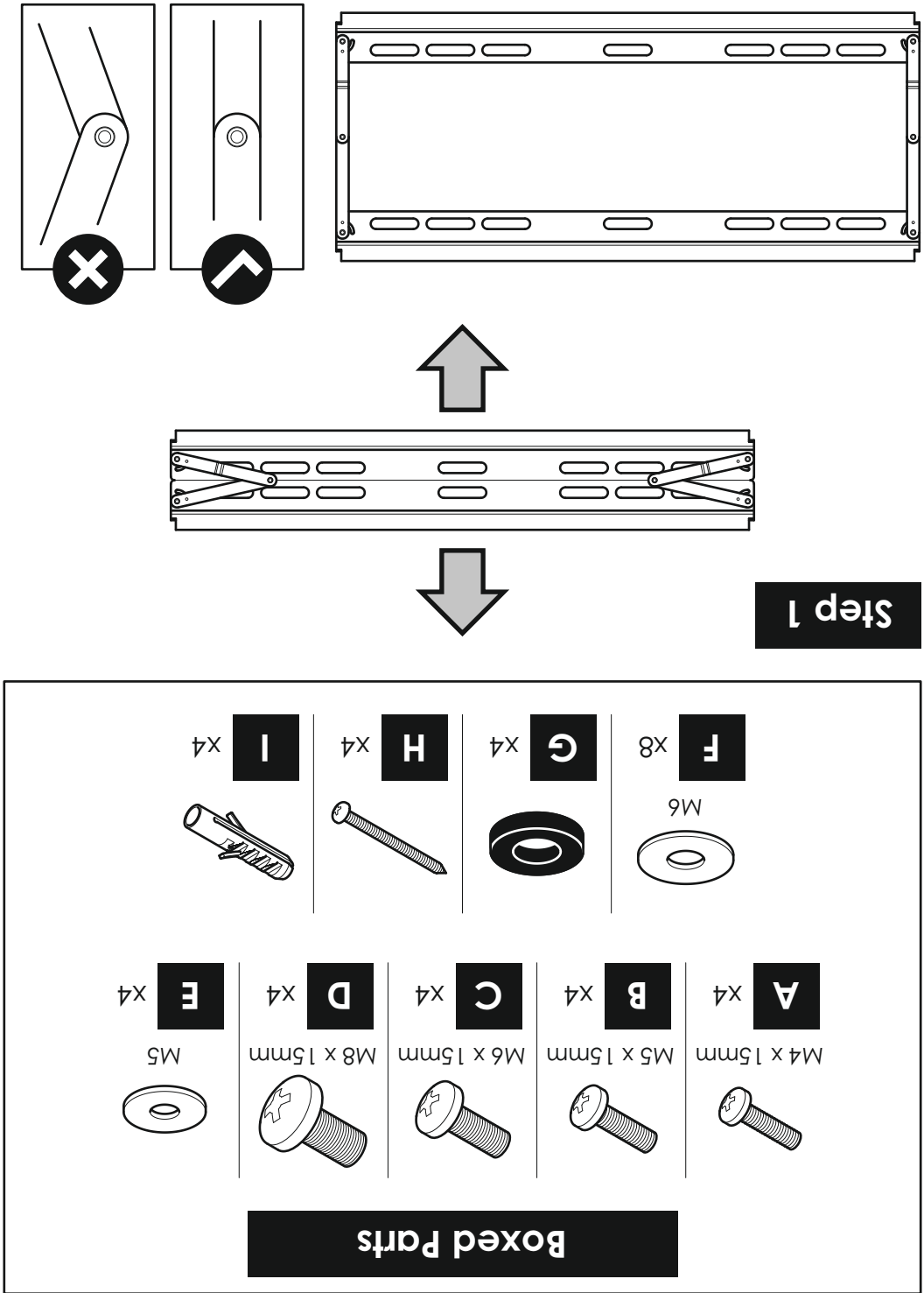
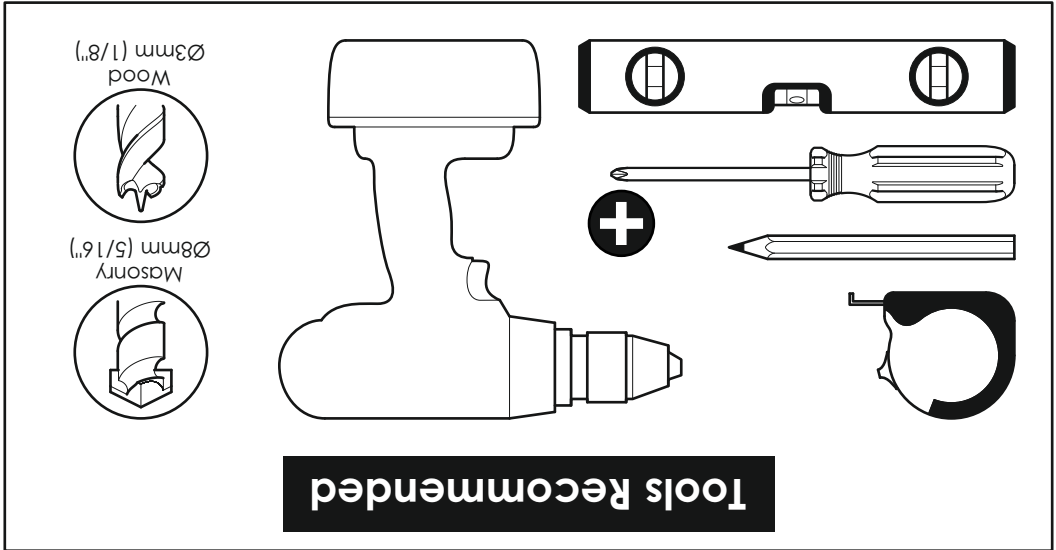
It is the responsibility of the installer to ensure that the mounting wall is of a suitable standard and void of any services (eg gas, electricity, water etc).

This product is intended for indoor use only. Use of this product outdoors could lead to failure and personal injury.

You will not need all these parts, so expect there to be some left over depending upon the specification of your TV.

Contents may vary from photography/ illustrations.

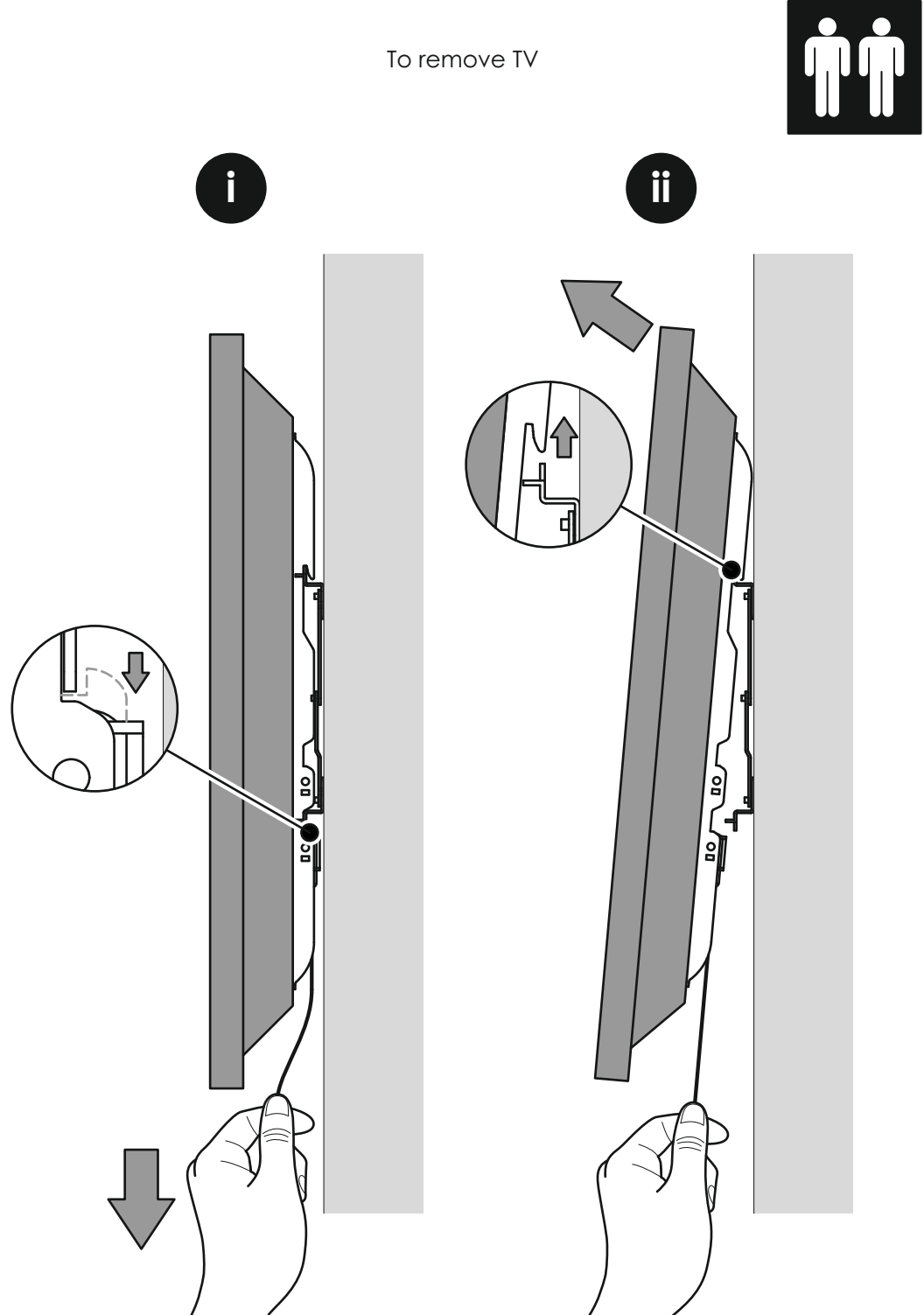
Retain all packaging in case the bracket needs to be returned.



MTC400
463692 rev 00

47"
119cm

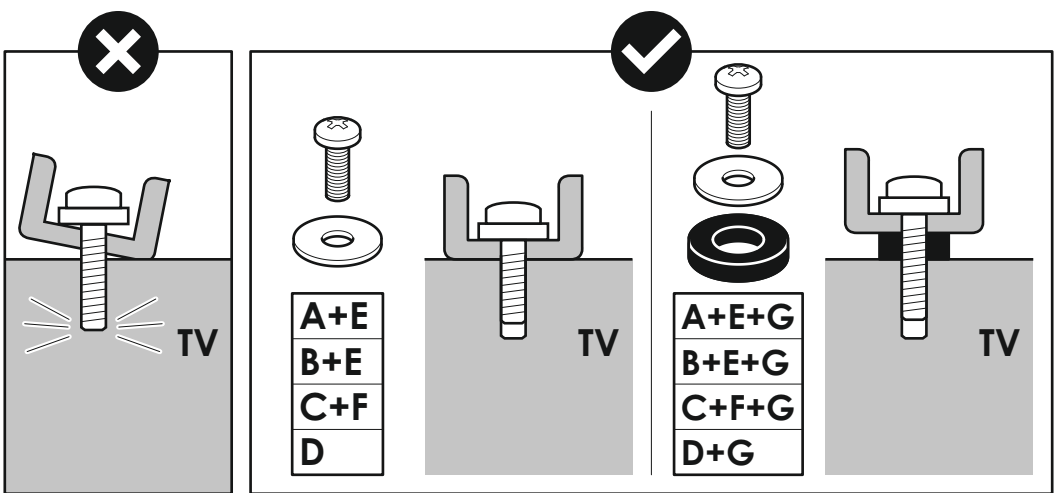
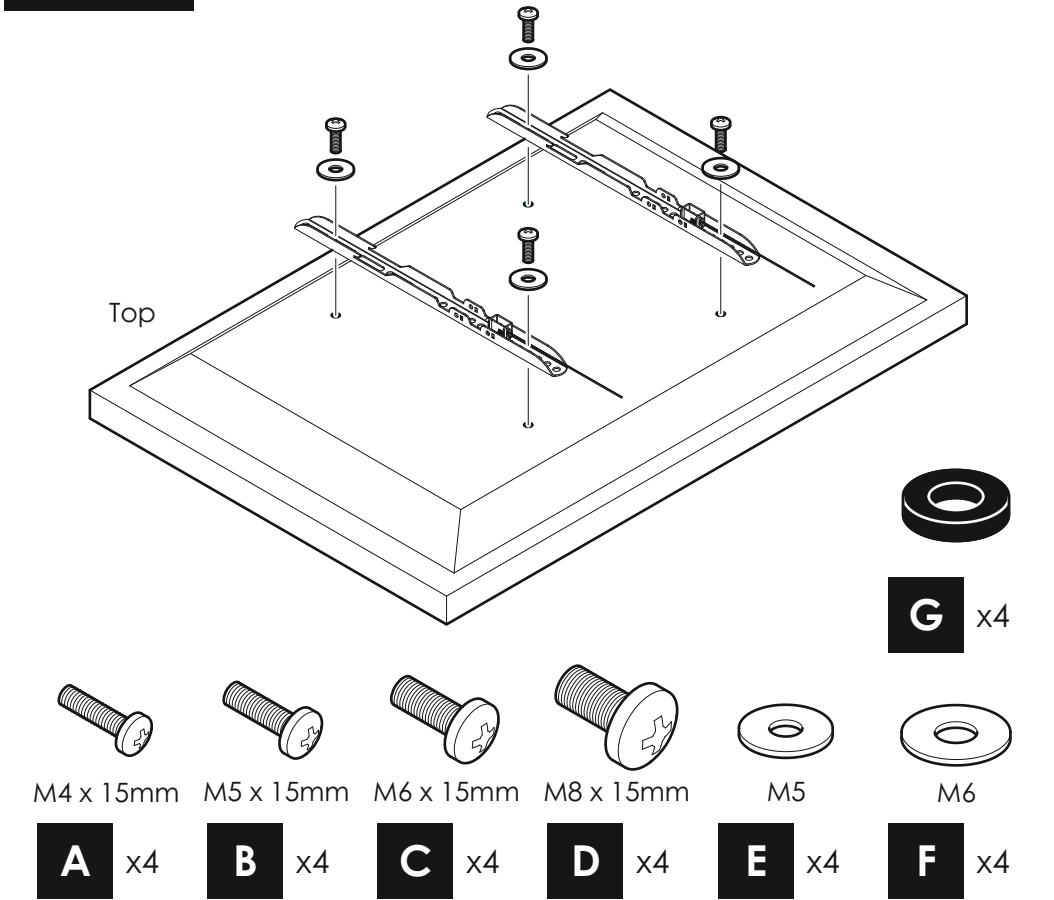
88lbs
40kg



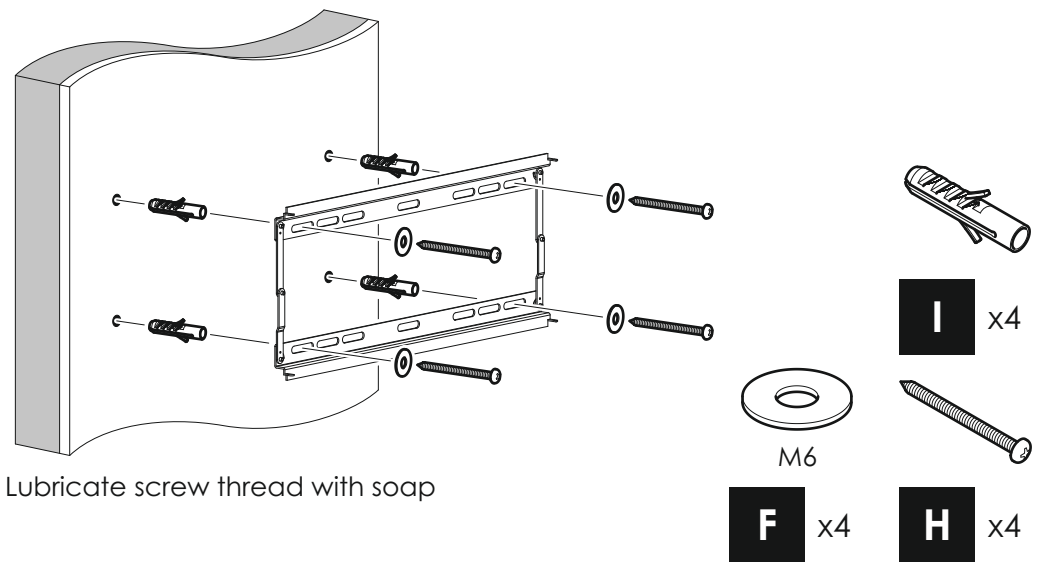
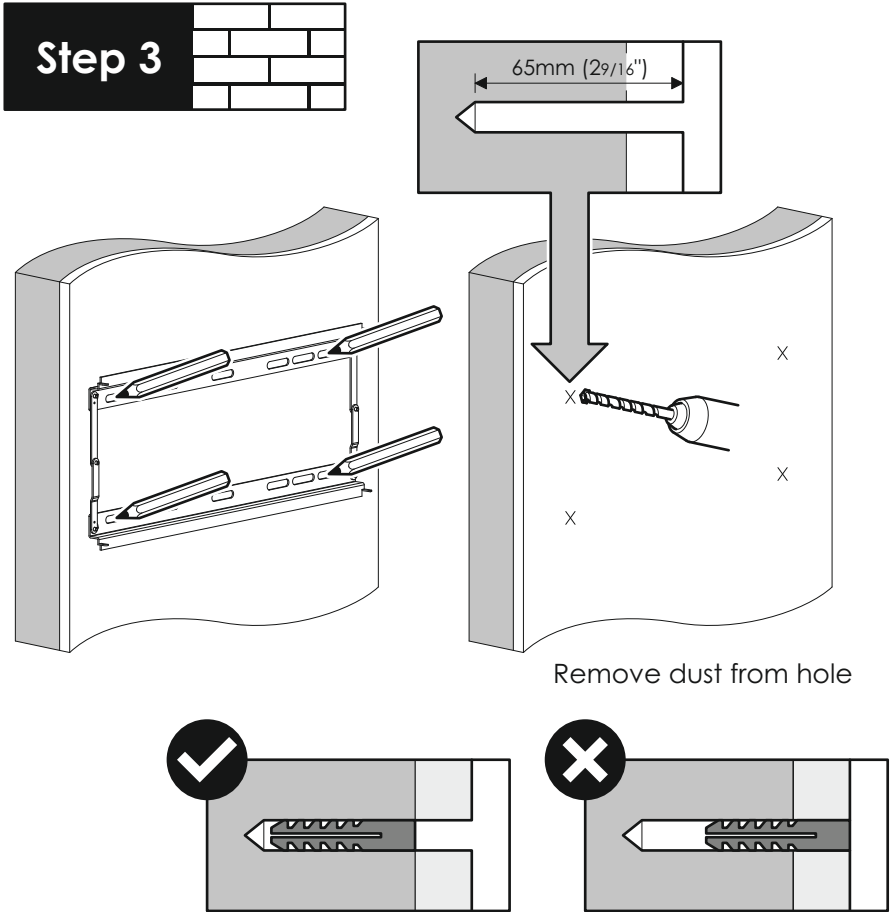
STOP

Read through **ALL** instructions before commencing assembly.
If you have any questions about this product or issues with assembly contact the customer help line before returning this product to the store.

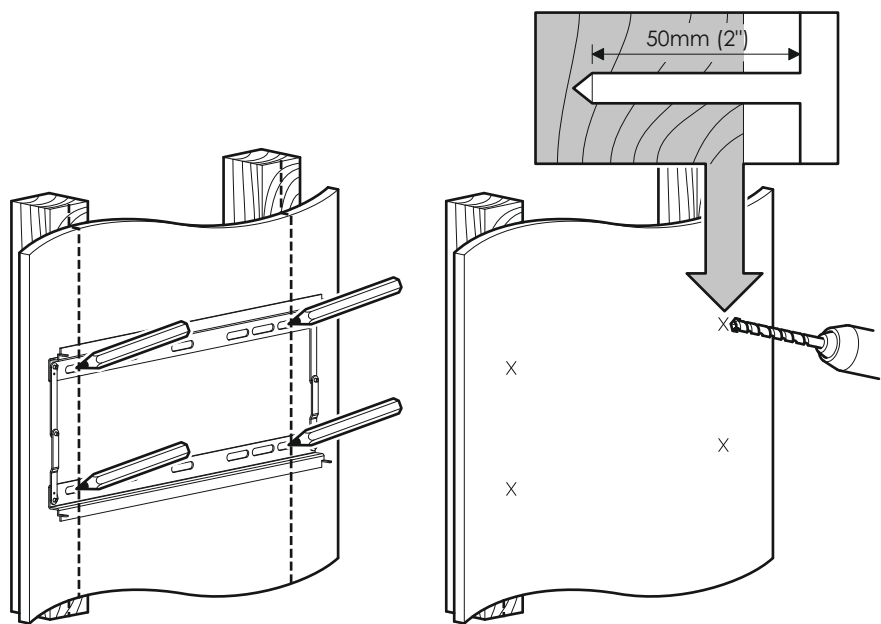
Step 2



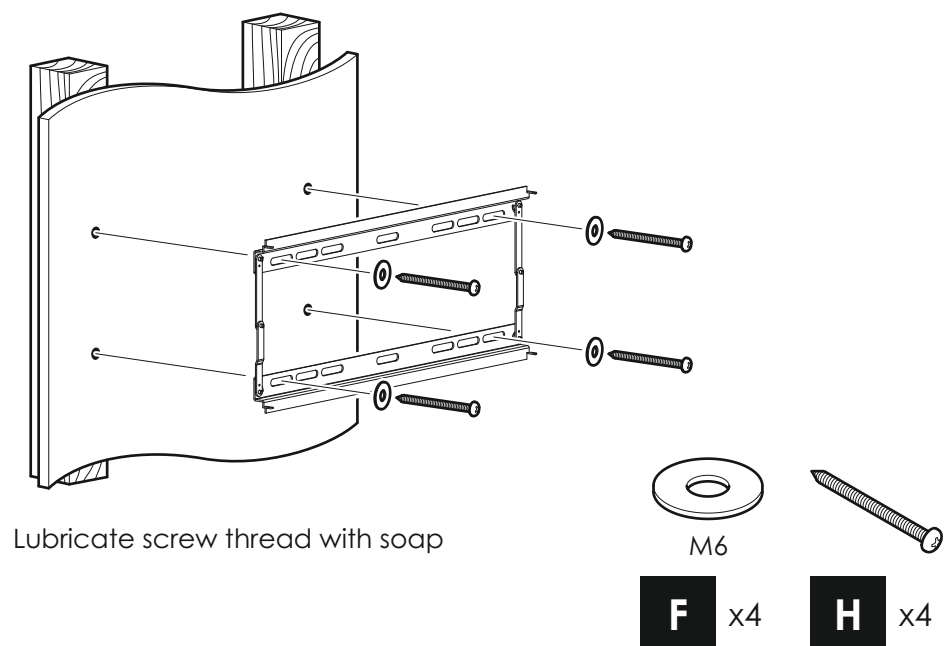
Step 3



Step 3



Ensure bracket is in the centre of the wood stud



Step 4

