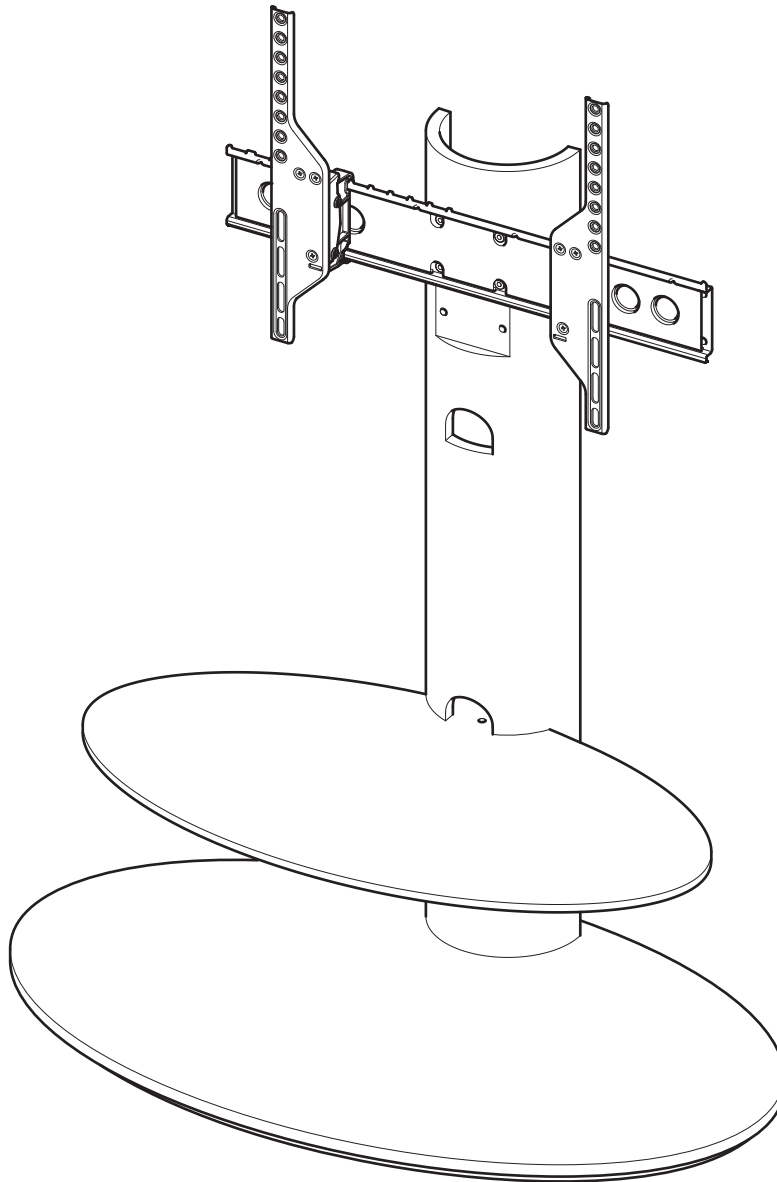


CHEPSTOW

FSL930CHE

463358 rev 01



Read through **ALL** instructions before commencing assembly.
If you have any questions about this product or issues with
assembly contact the customer services help line before
returning this product to the store.

CUSTOMER SERVICES HELP LINE NUMBER:

01952 670009
0870 0609777 (UK)

AVF Group Ltd
Road 30. Hortonwood Ind Est,
Telford, Shropshire, TF1 7YE, England
www.avfgroup.com

IMPORTANT INFORMATION!

We advise that before starting the assembly of this product that you familiarise yourself with the instructions and the parts list in this leaflet.

Do not's

Do not over tighten any part of this assembly

Do not place hot or cold objects on to or close next to any glass surface unless the object is sufficiently insulated to prevent contact.

Do not strike the glass with hard or pointed items.

Do not sit or stand upon horizontal glass surfaces.

Do not use washing powders or other substances containing abrasives when cleaning the glass surfaces as these may scratch the glass.

Do's

Do use a damp cloth with diluted washing up liquid for cleaning the glass surfaces.

Do use a soft cloth with a suitable furniture polish when cleaning wooden panels.

Maximum TV size and weight capacity

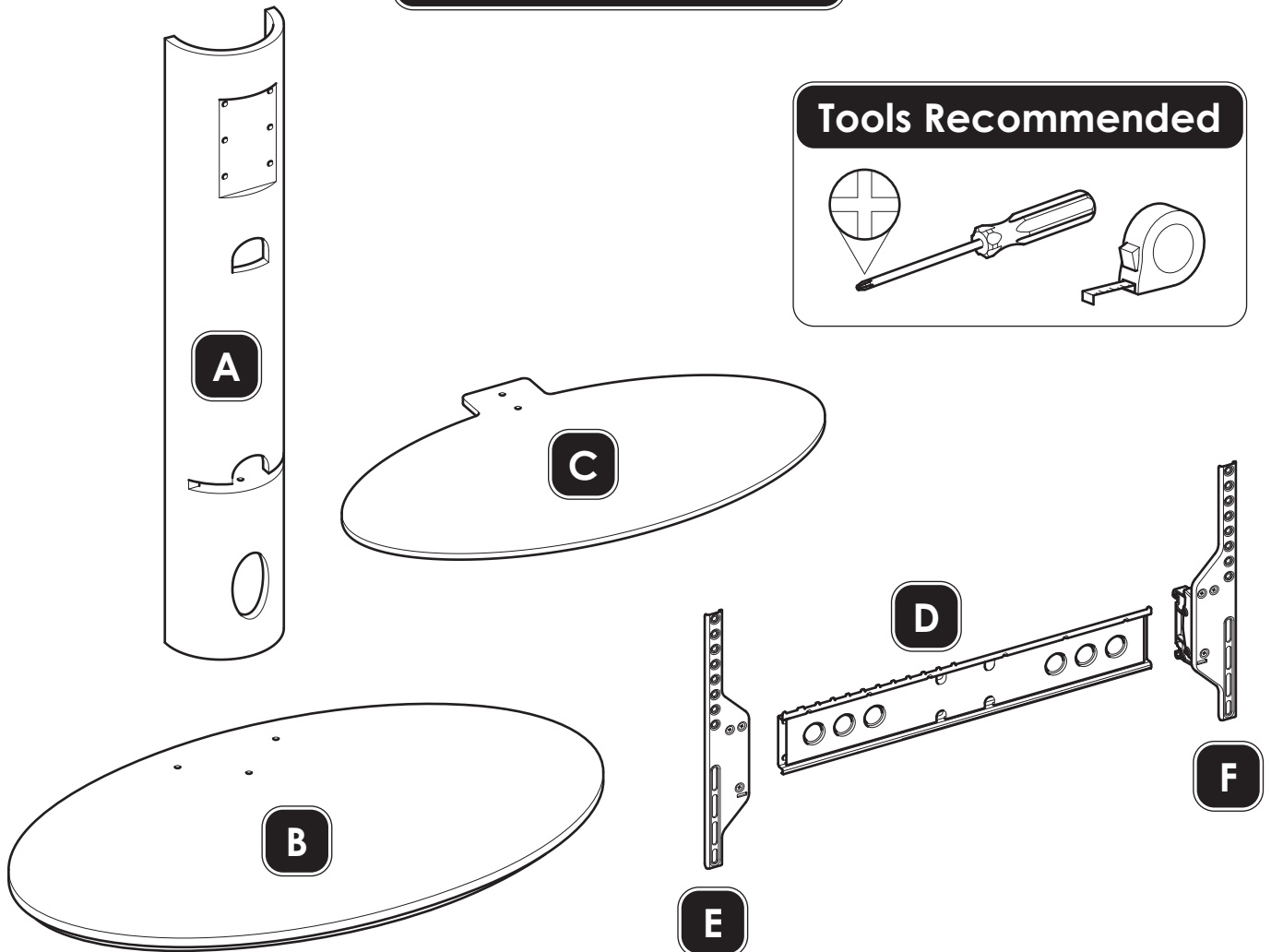
The maximum TV size for this stand is 50" / 127cms.

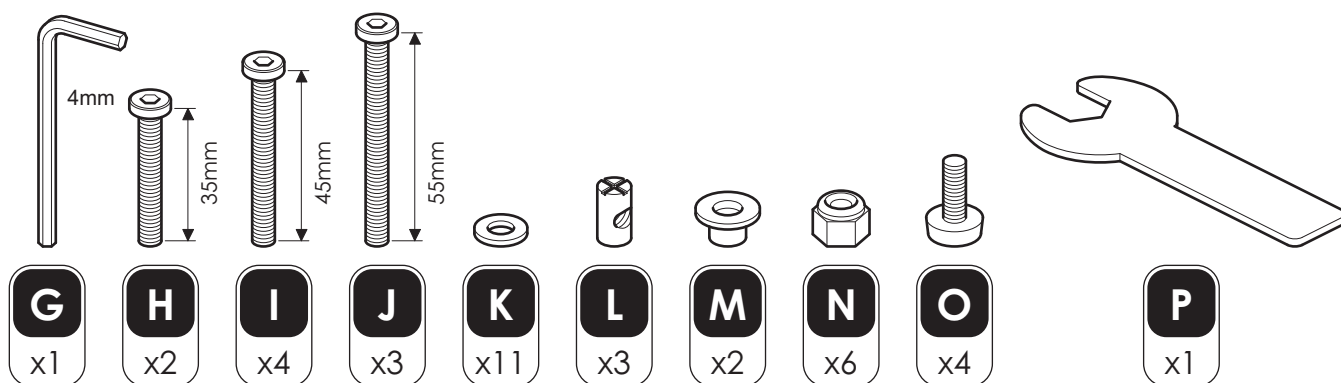
TV weight must not exceed 81lbs / 37kgs.

The maximum load for the glass shelf is 33lbs / 15kgs.

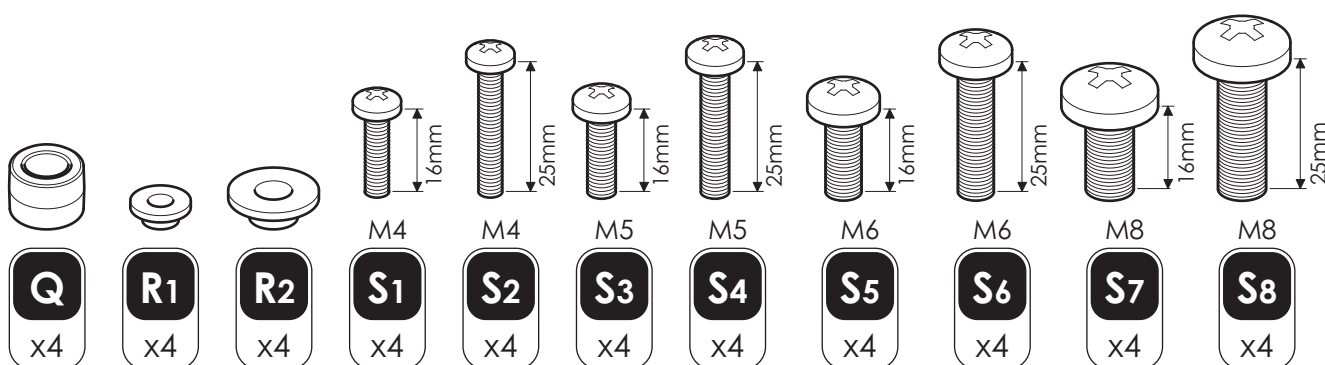
WARNING Wherever possible distribute weight evenly.

Boxed Parts



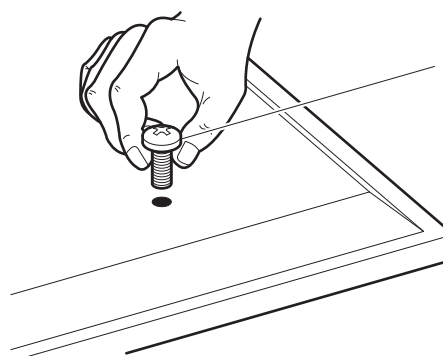
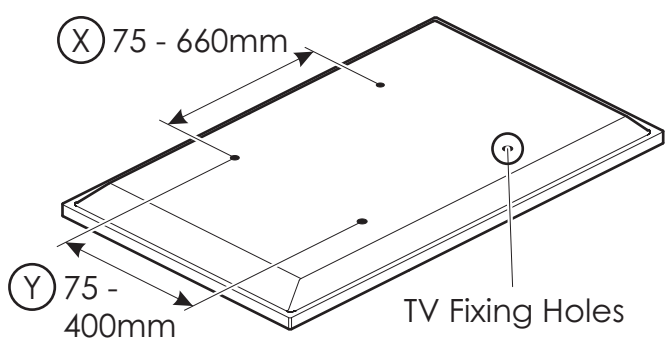


TV Screws, Reducers and Spacers



Step 1

Measure the TV Fixing Holes Width and Height



M4 = S1/S2

M5 = S3/S4

M6 = S5/S6

M8 = S7/S8



If width (X) is greater than 660mm or height (Y) greater than 400mm STOP installation now and contact the customer help line

You are provided with 4 diameters of TV fixing screws, **M4**, **M5**, **M6** and **M8**. Determine the screw diameter that fits and remember for step 7.

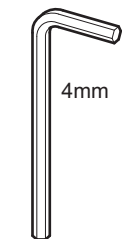
step 2



L
x3



Step 3



A technical drawing of a bolt. The bolt has a hexagonal head at the top and a threaded shank. A vertical dimension line with arrows at both ends is placed to the right of the bolt, indicating the length of the threaded portion. The dimension is labeled '55mm'.

J
x3

K
x3

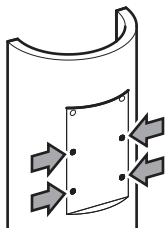


x4

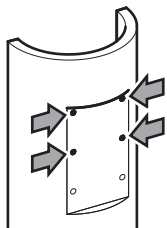
Step 4

i

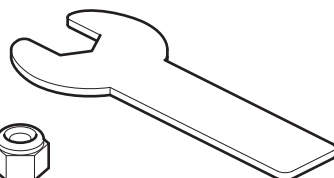
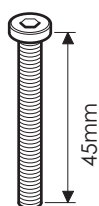
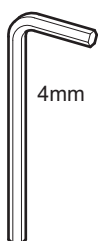
Please consider the size of your TV before fixing plate **D**. See below for guide



Recommended
for Medium to
Large TV



Recommended
for Large to
Extra Large TV



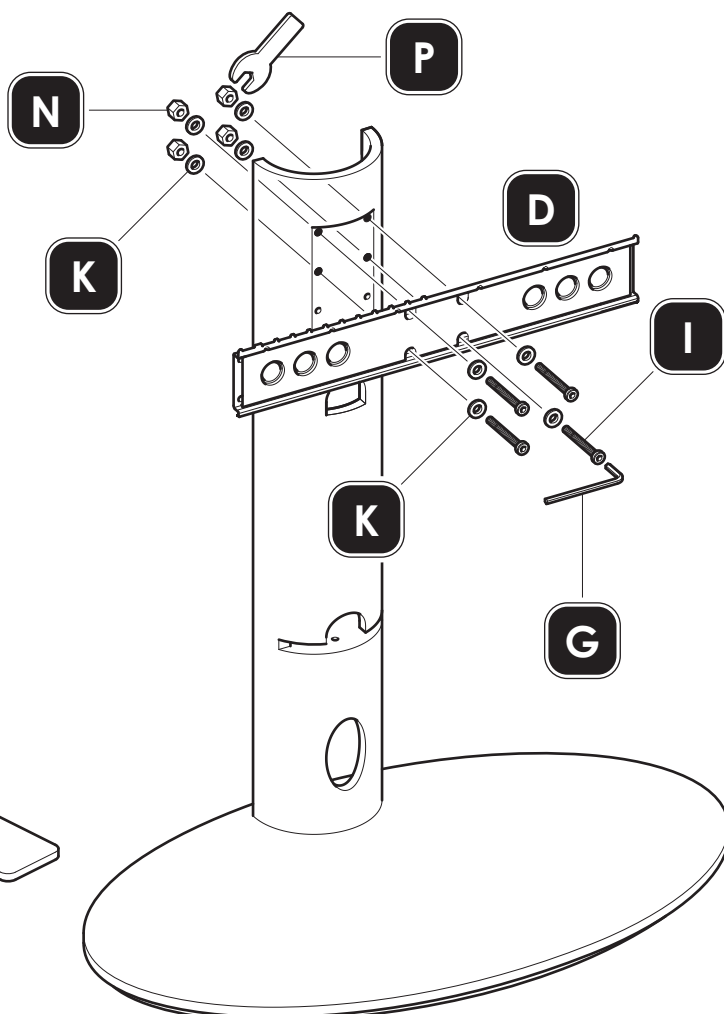
G
x1

I
x4

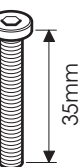
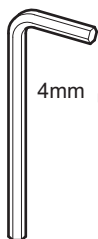
K
x8

N
x4

P
x1



Step 5

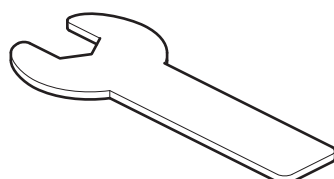


G
x1

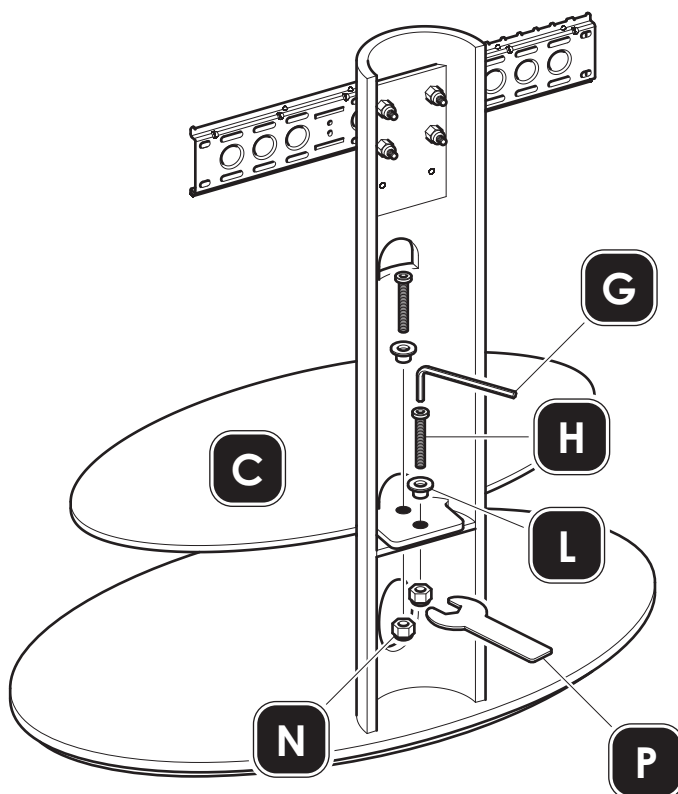
H
x2

L
x2

N
x2



P
x1

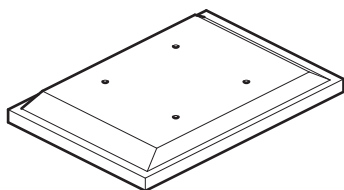


DO NOT OVER TIGHTEN

Step 6

No Spacers

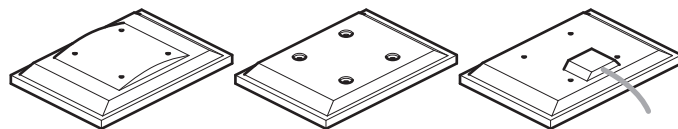
For TVs with flat/unobstructed back



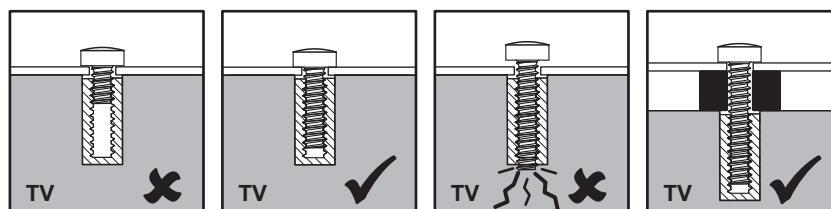
Spacers

Q

For TVs with irregular/obstructed back



WARNING

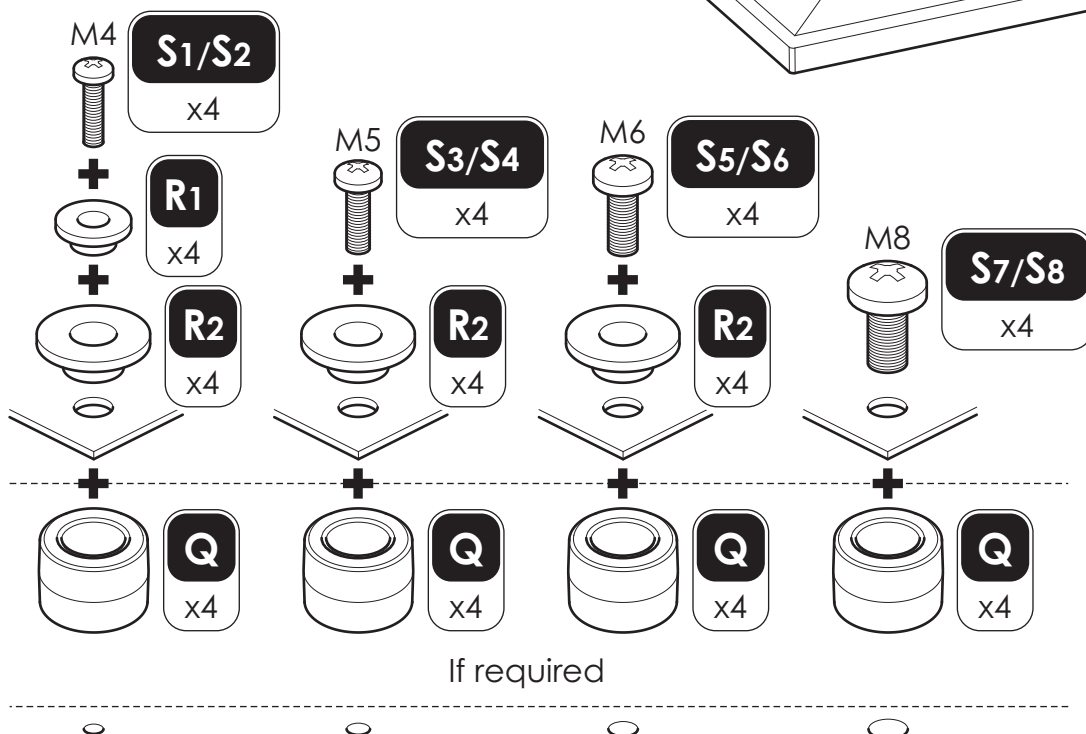
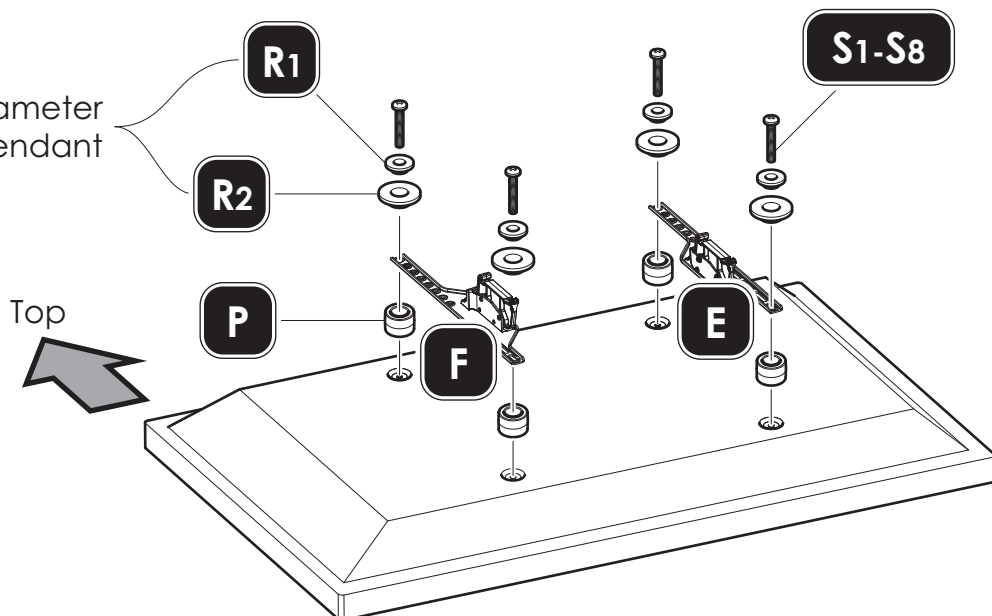


After completing step 7 you will have fittings left over, please keep for future reference

Step 7

Screw diameter
dependant

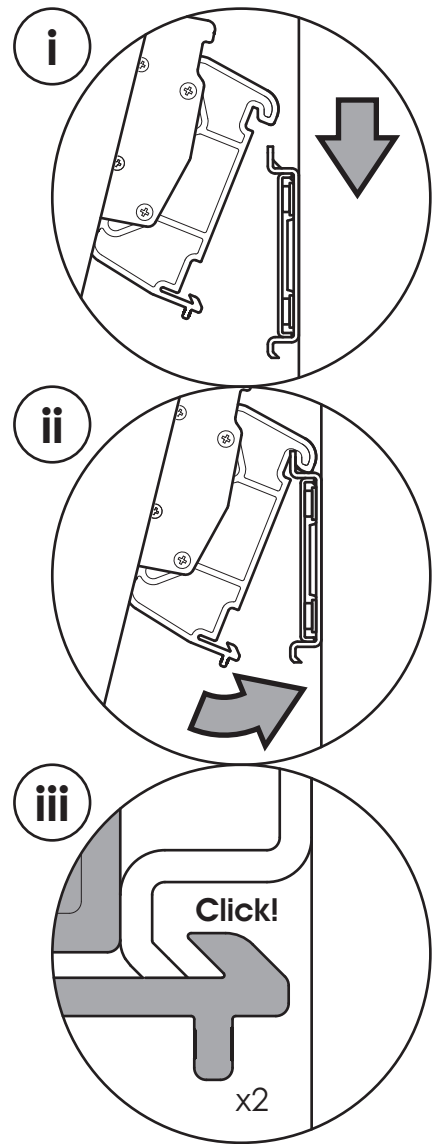
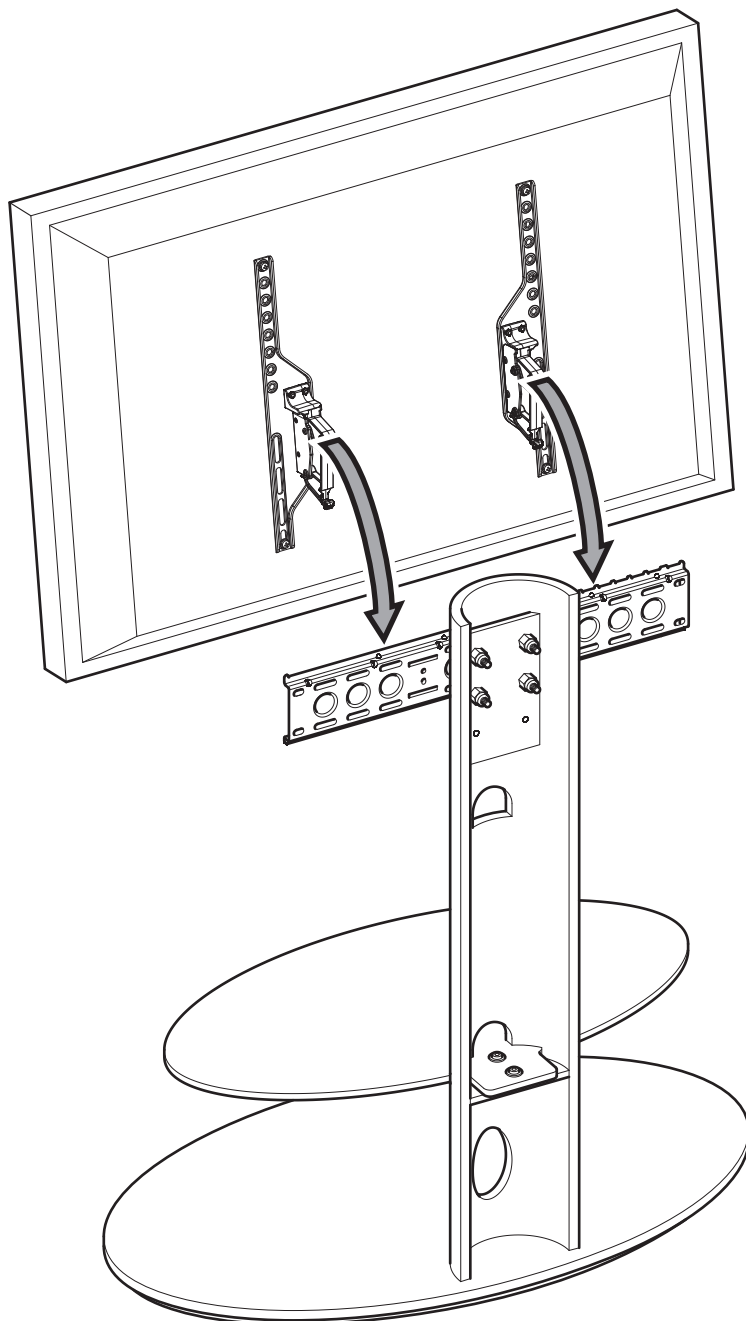
Top



Attach the bracket to the back of your TV using suitable screw, reducer and spacer combinations.

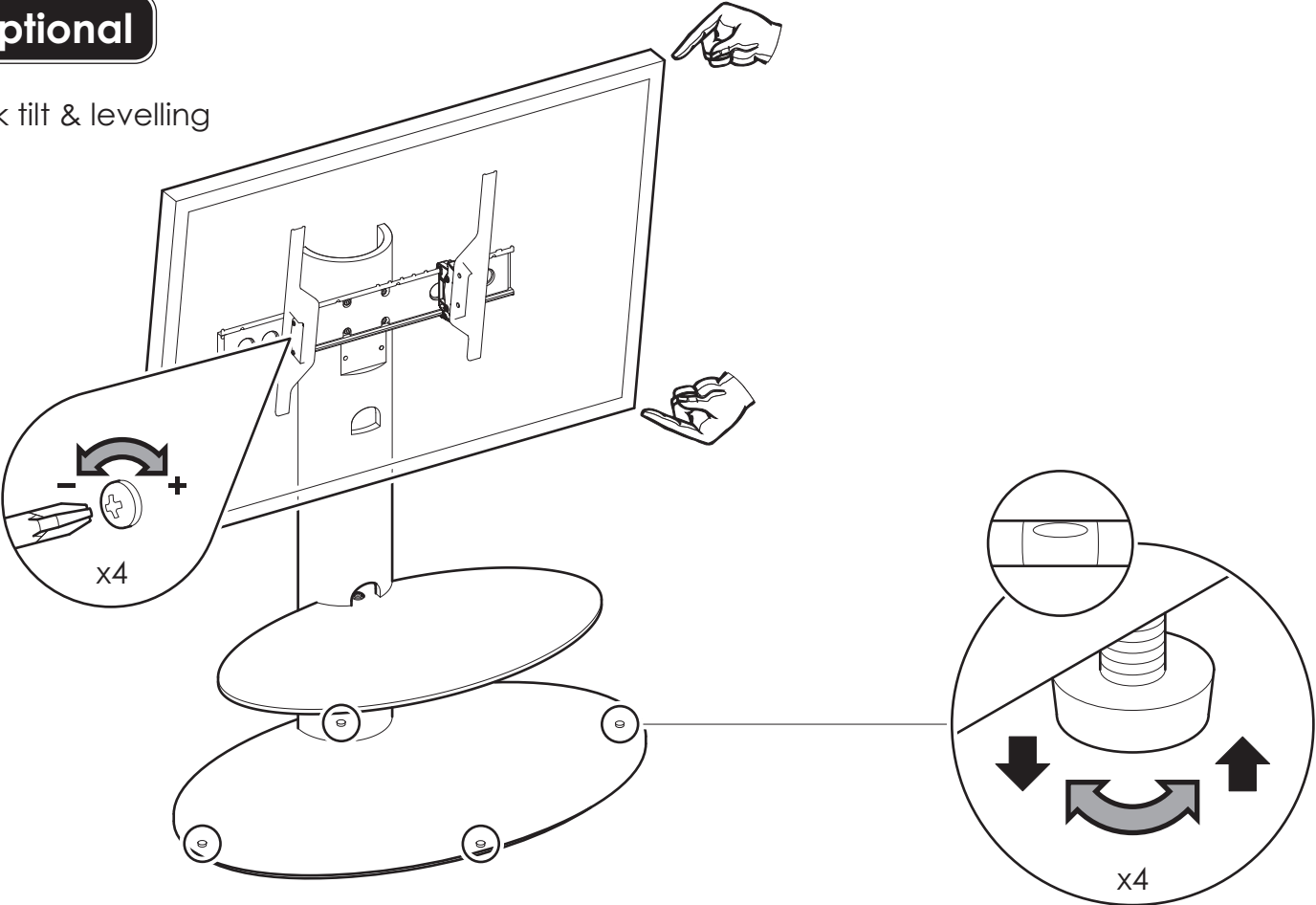
If you have any issues fitting to the back of your TV with the supplied screws, please call the customer services helpline

step 8



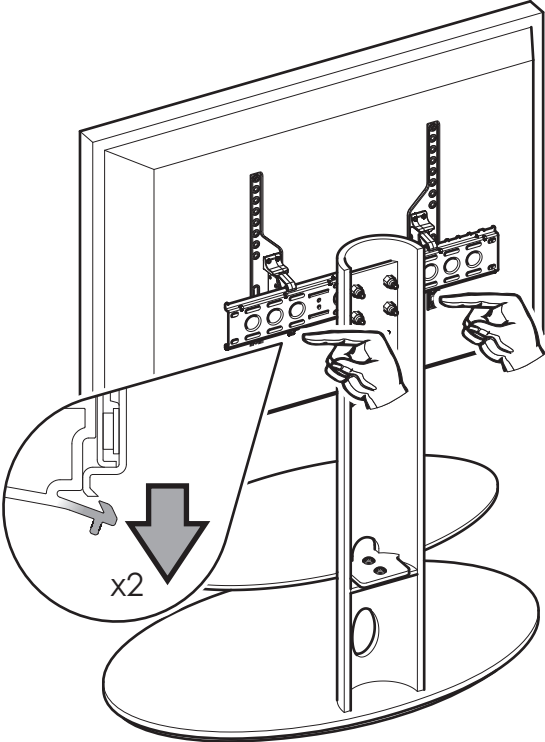
Optional

Lock tilt & levelling



To remove TV

i



ii

