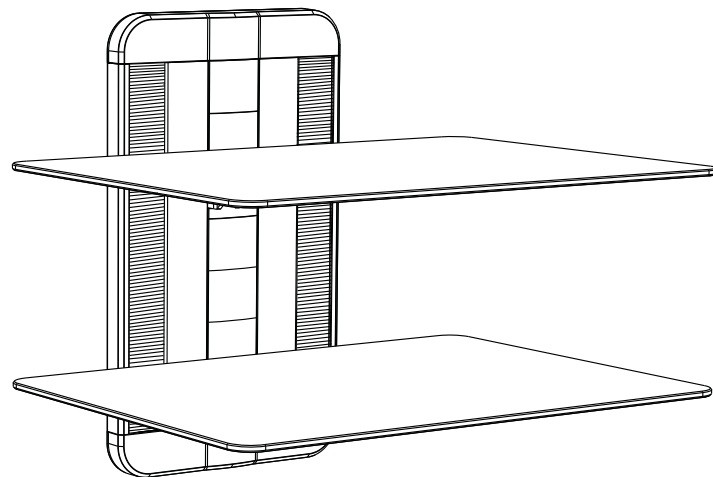


# S1200

English language

Leaflet No. **463064** rev 01



Read through all instructions before commencing installation.

*If you have any questions about this product or issues with installation contact the customer services helpline before returning this product to the store.*

**AVF Group Ltd.**

Road 30, Hortonwood Ind Est, Telford, Shropshire, TF1 7YE, England.

**+44 (0) 1952 670009**

**0870 0609777 (UK)**

**AVF Incorporated.**

3187, Cornerstone Drive, Mira Loma, CA 91752, USA.

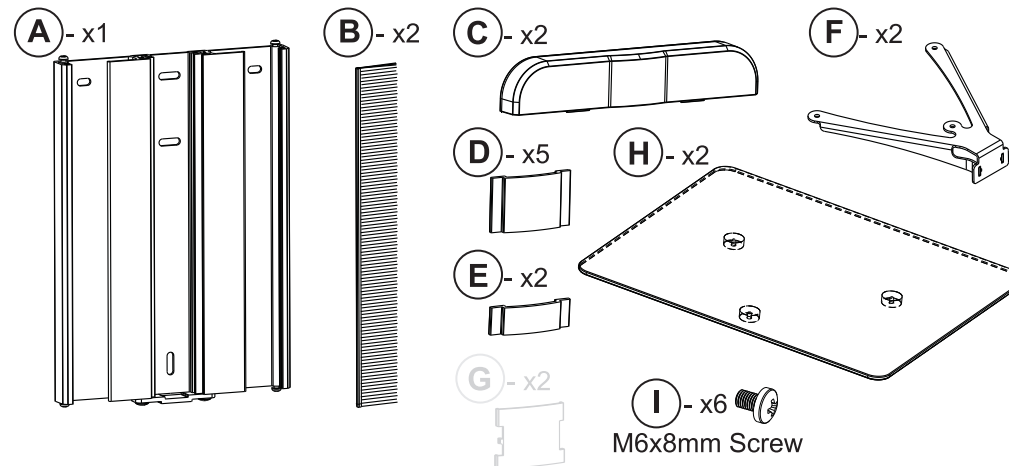
**1-800 667 0808 (USA)**

**Orbital Holdings Inc.**

3187, Cornerstone Drive, Mira Loma, CA 91752, USA.

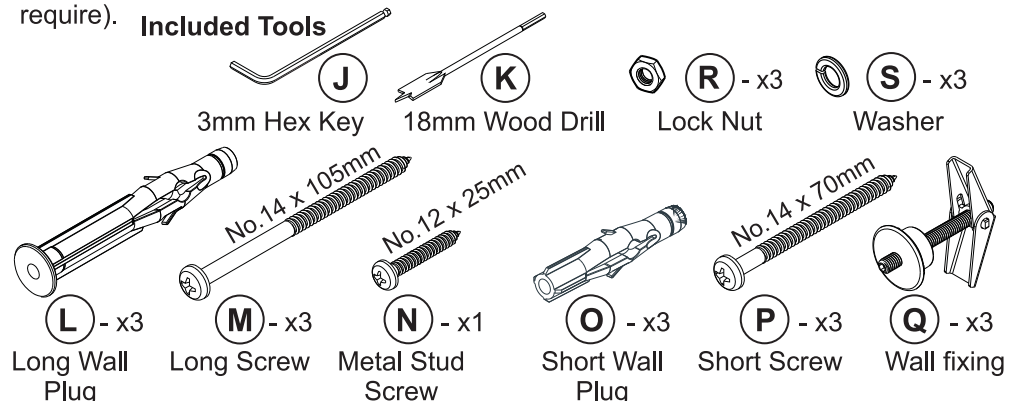
**1-800 601 8450 (USA)**

## 1 Boxed Parts

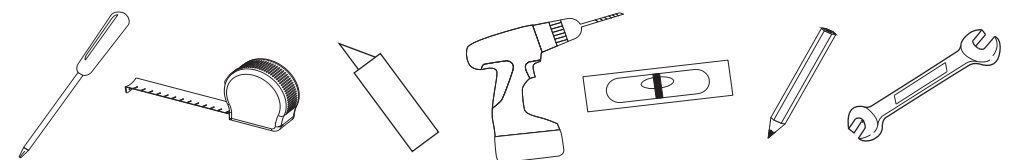


**Wall Fixings:** Parts to attach to the wall (type of wall will determine which fixings you require).

**Included Tools**



## 2 Tools Required

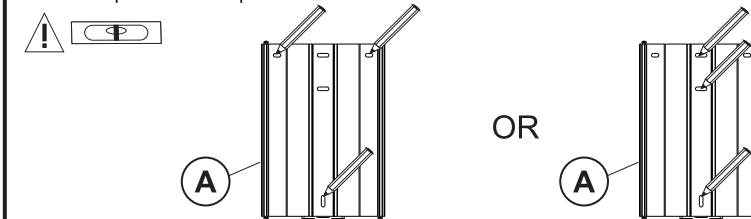


## 3 Planning & Preparation

Determine the wall type that you have (i.e. Brick/Stud/Plasterboard/Sheetrock). Ensure the drilling area is free from mains services (Gas/Electric/Water). Drill three 3mm pilot holes to verify the wall type and select the appropriate fixings (See Section 5).

## 4 Marking Wall For Drill Points

Use the wall bracket (A) as a template and position it on your wall. Ensure the bracket is level and mark the three drill points with a pencil.

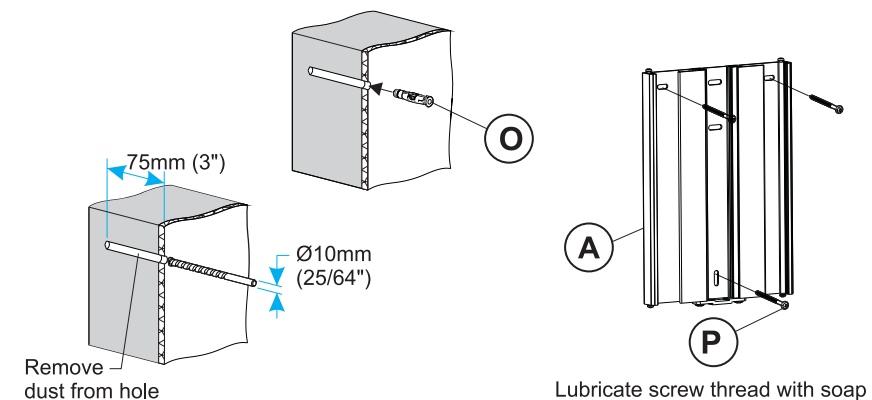


## 5 Fit Bracket To Wall

Use the correct fixings for your wall type. Mixing fixing types may be required for installations that span different wall types. DO NOT OVER TIGHTEN SCREWS.



**Solid Wall**



**Dot & Dab**

